



राजस्थान राजपत्र
विशेषांक

RAJASTHAN GAZETTE
Extraordinary

साधिकार प्रकाशित

Published by Authority

भाद्र 09, गुरुवार, शाके 1945-अगस्त 31, 2023
Bhadra 09, Thursday, Saka 1945- August 31, 2023

भाग 4 (ग)

उप-खण्ड (I)

राज्य सरकार तथा अन्य राज्य-प्राधिकारियों द्वारा जारी किये गये (सामान्य आदेशों, उप-विधियों आदि को सम्मिलित करते हुए) सामान्य कानूनी नियम।

Department of Environment and Climate Change
Notification

Jaipur, July 19, 2023

G.S.R.81 .-Whereas the draft notification of the Kaylana Wetland, situated in Village Gewa, Tehsil Jodhpur, district Jodhpur Rajasthan was published as required by rule 7 of the Wetland (Conservation and Management) Rules, 2017 read with the Environment (Protection) Act, 1986 (Central Act No. 29 of 1986), vide notification of the Department of Environment and Climate Change, number G.S.R. 29 dated 24.04.2023 in the Rajasthan Gazette, Extraordinary, Part 4 (ga), sub-part (II), inviting objections and suggestions from all persons likely to be affected thereby before expiry of the period of sixty days from the date on which the copies of the said notification were made available to the public.

And whereas, copies of the Gazette in which the said notification was published were made available to the public on the 24.04.2023.

And whereas, no objections and suggestions were received on the said Draft Notification.

Now therefore, in exercise of the powers conferred by rule 7 of the Wetland (Conservation and Management) Rules, 2017 read with provisions of the Environment (Protection) Act, 1986 (Central Act No. 29 of 1986), the State Government hereby notifies Kaylana Wetland, situated in Village Gewa, Tehsil Jodhpur, district Jodhpur Rajasthan as a wetland and that,-

- (i) the extent of the wetland/wetland complex and its zone of influence shall be as described in Schedule-I of this notification;
- (ii) the activities prohibited within the wetland and its zone of influence shall be as listed in Schedule-II of this notification;
- (iii) the activities regulated within the wetland and its zone of influence, i.e. permitted only with permission of the State Government shall be as listed in Schedule-III of this notification. Request for permission for regulated activities may be made to the District Environment Committee headed by the District Collector; and
- (iv) the State Wetland Authority, Rajasthan shall monitor the enforcement of the provisions of this notification.

Schedule-I

Kaylana Lake Wetland comprising of total area of 106.92 Hectare within the following boundary delineation:-

The geo-coordinates of Kaylana Lake Wetland of Jodhpur, Rajasthan

Kaylana Lake

S.no	Latitude	Longitude	S.no	Latitude	Longitude	S.no	Latitude	Longitude
1	26.29992352750	72.97171180230	49	26.31456396810	72.97165819740	97	26.31089514070	72.97282136520
2	26.29989917190	72.97082436270	50	26.31546220210	72.97167275620	98	26.31012429370	72.97249012310
3	26.30078994400	72.97081325860	51	26.31635586710	72.97174974690	99	26.30945153350	72.97300311260
4	26.30168321350	72.97090799970	52	26.31721566920	72.97203472240	100	26.30961341800	72.97378662220
5	26.30256266340	72.97084116510	53	26.31808409890	72.97195393370	101	26.31046676120	72.97351539110
6	26.30327424420	72.97139207100	54	26.31892791710	72.97186525370	102	26.31122056580	72.97401107480
7	26.30404048710	72.97144052170	55	26.31908044470	72.97102552720	103	26.31200422870	72.97446800010
8	26.30359895170	72.97065563970	56	26.31988909950	72.97138476460	104	26.31180704230	72.97506737440
9	26.30276650730	72.97062275020	57	26.32033222980	72.97181607350	105	26.31097374350	72.97475698580
10	26.30227417350	72.96979737560	58	26.32087670070	72.97229084940	106	26.31133677690	72.97522574660
11	26.30180695330	72.96894330200	59	26.32174502340	72.97234490590	107	26.31207351590	72.97575026600
12	26.30138818950	72.96809401430	60	26.32255216170	72.97276582920	108	26.31133843410	72.97593808880
13	26.30071351940	72.96764917690	61	26.32342506810	72.97298730780	109	26.31053287620	72.97549211410
14	26.30149799550	72.96743808880	62	26.32312717400	72.97345683780	110	26.30984200120	72.97578754590
15	26.30178707400	72.96650747580	63	26.32228928950	72.97311683530	111	26.30930493060	72.97631618140
16	26.30236082330	72.96656359350	64	26.32139451060	72.97299800780	112	26.30938925210	72.97727290780
17	26.30252985870	72.96744570130	65	26.32051780480	72.97314011110	113	26.30911943370	72.97818360770
18	26.30300647680	72.96807364580	66	26.31962567520	72.97310081240	114	26.30841691470	72.97873464210
19	26.30307759190	72.96878768870	67	26.31878333310	72.97279960240	115	26.30842652260	72.97938579890
20	26.30371888850	72.96929754610	68	26.31791123900	72.97261272300	116	26.30925645360	72.97969017100
21	26.30446260460	72.96977624450	69	26.31701076750	72.97255041640	117	26.31010970420	72.97994547270
22	26.30521483810	72.96956634820	70	26.31632264750	72.97281611170	118	26.30987109740	72.98062705980
23	26.30593105790	72.96974434030	71	26.31651316260	72.97375095240	119	26.30939522110	72.98094421760
24	26.30649413090	72.97037987740	72	26.31680883820	72.97465639140	120	26.30897521230	72.98047144530
25	26.30729658700	72.97020563450	73	26.31738487270	72.97540477400	121	26.30824293110	72.98053789100
26	26.30793859780	72.97087967060	74	26.31778145810	72.97629513010	122	26.30785868080	72.97972025580
27	26.30840380990	72.97045215090	75	26.31799089370	72.97723126040	123	26.30719057860	72.97906266060
28	26.30794994200	72.96965564510	76	26.31801030870	72.97823240760	124	26.30646691170	72.97884507260
29	26.30729127710	72.96900588610	77	26.31784631910	72.97920235740	125	26.30712604230	72.97821212050
30	26.30686572270	72.96815300770	78	26.31790193570	72.98019506040	126	26.30682443220	72.97737092850
31	26.30724193700	72.96755071320	79	26.31787939810	72.98111673110	127	26.30762528240	72.97699838300
32	26.30766429940	72.96825910530	80	26.31707128540	72.98104805060	128	26.30786048740	72.97611898360
33	26.30843011700	72.96869729460	81	26.31741139430	72.98015738540	129	26.30822490770	72.97526136100
34	26.30907257840	72.96939375210	82	26.31679069190	72.98033181290	130	26.30753799420	72.97540246530
35	26.30938759750	72.96902239710	83	26.31674173540	72.97939857510	131	26.30679974750	72.97510705030
36	26.30994053120	72.96851011840	84	26.31710864990	72.97866440090	132	26.30612449880	72.97447754200
37	26.31010409860	72.96766661660	85	26.31734313960	72.97772073650	133	26.30524430730	72.97457028280
38	26.31040515490	72.96675167750	86	26.31728079790	72.97673767890	134	26.30481825940	72.97541739590

39	26.31105592010	72.96725013370	87	26.31679032760	72.97591026900	135	26.30462449340	72.97476597560
40	26.31176593220	72.96780643010	88	26.31602759680	72.97542484600	136	26.30410249180	72.97408690370
41	26.31254572250	72.96761834720	89	26.31632506680	72.97491291940	137	26.30365878210	72.97471374990
42	26.31256506670	72.96849319540	90	26.31577989590	72.97414919910	138	26.30308855540	72.97509163950
43	26.31312315030	72.96809557660	91	26.31562803020	72.97316997370	139	26.30248150960	72.97464384640
44	26.31312535910	72.96894439600	92	26.31521644520	72.97238546170	140	26.30172548790	72.97448939730
45	26.31312998960	72.96975103790	93	26.31432902590	72.97233445730	141	26.30087842830	72.97417641410
46	26.31336963690	72.97059556120	94	26.31343568000	72.97222734960	142	26.30009431920	72.97402641700
47	26.31296762130	72.97139806000	95	26.31255830120	72.97234632860	143	26.30019476110	72.97308316490
48	26.31367420090	72.97155394990	96	26.31174339460	72.97271287760	144	26.30022258990	72.97232711740

Details of Catchment Area/Zone of Influence of Kaylana Wetland falling within the boundary limit of Jodhpur, Rajasthan:-

Total Area Of = 128.08

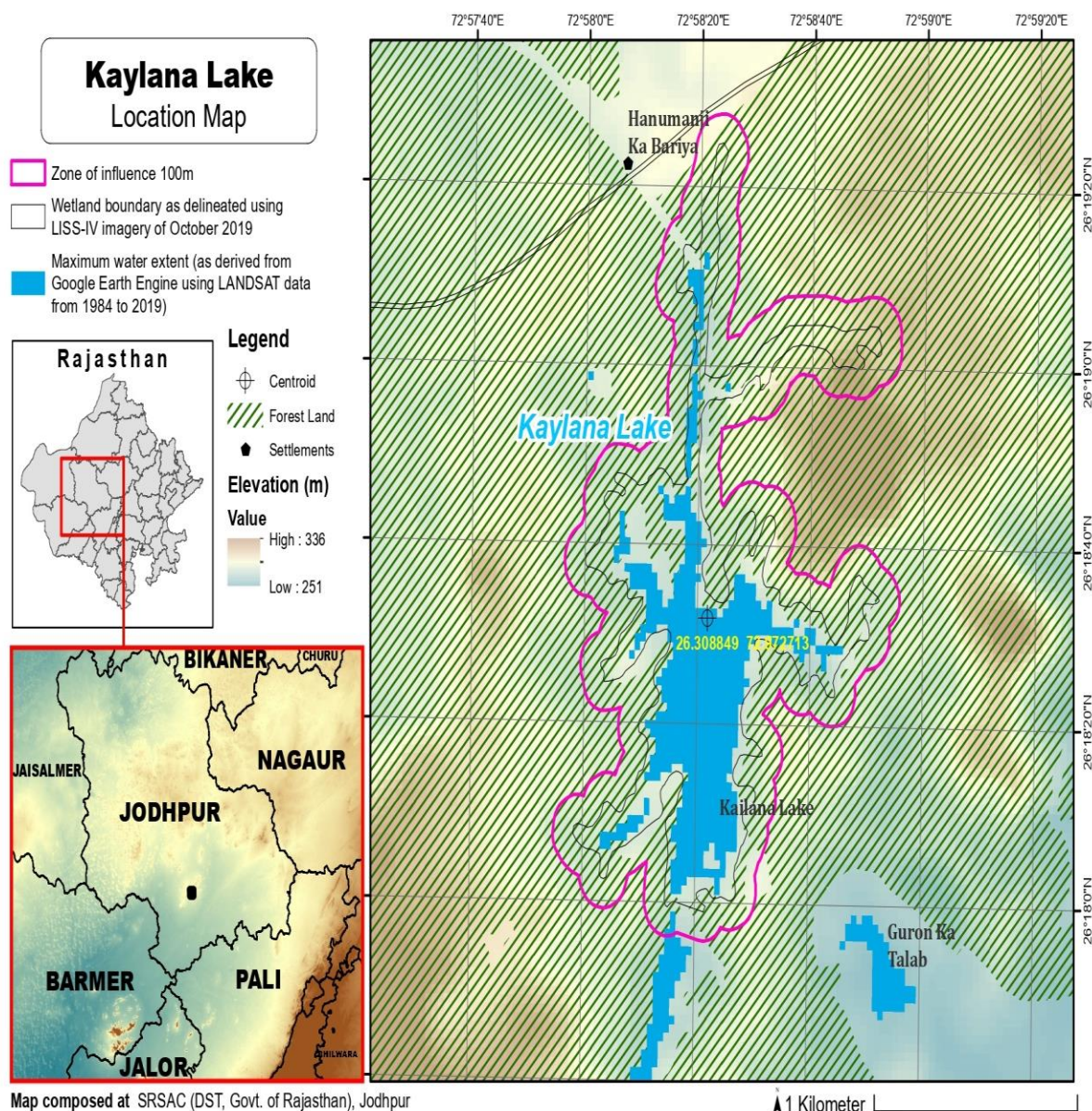
The geo-coordinates of Kaylana Wetland and its Zone of influence

Kaylana Lake

S.no	Latitude	Longitude	S.no	Latitude	Longitude	S.no	Latitude	Longitude
1	26.31784084570	72.97442640290	39	26.30814273640	72.98169506020	77	26.30596776640	72.96828334610
2	26.31833795990	72.97525321180	40	26.30745670360	72.98109689730	78	26.30597814150	72.96729646230
3	26.31875553650	72.97613131540	41	26.30705995170	72.98024996720	79	26.30665371810	72.96669568550
4	26.31888900640	72.97711227760	42	26.30625342150	72.97998721440	80	26.30753015490	72.96652844530
5	26.31891042750	72.97811335170	43	26.30561760270	72.97933367730	81	26.30822840190	72.96710694610
6	26.31882443280	72.97910435200	44	26.30566351750	72.97835580610	82	26.30886795900	72.96772123830
7	26.31880789250	72.98008586580	45	26.30590245040	72.97748888700	83	26.30934177950	72.96705670620
8	26.31888554940	72.98107057980	46	26.30623437050	72.97659017980	84	26.30966492760	72.96615217180
9	26.31843623800	72.98190913600	47	26.30632884180	72.97612200330	85	26.31044660800	72.96570956690
10	26.31758556640	72.98213916960	48	26.30580224790	72.97568420270	86	26.31129844490	72.96596549580
11	26.31670828420	72.98203188750	49	26.30516211010	72.97637491150	87	26.31193439260	72.96664068330
12	26.31618774180	72.98125237260	50	26.30428159690	72.97643001120	88	26.31280758870	72.96664903400
13	26.31578168680	72.98038483210	51	26.30351093400	72.97618898540	89	26.31355428260	72.96718614910
14	26.31583665410	72.97939352520	52	26.30265014960	72.97597450150	90	26.31414984440	72.96791093490
15	26.31595924590	72.97842467370	53	26.30181878630	72.97571366190	91	26.31413182150	72.96890152650
16	26.31644353260	72.97763778750	54	26.30101730190	72.97526360790	92	26.31424136170	72.96978475440
17	26.31619667740	72.97672524310	55	26.30013427190	72.97523758370	93	26.31452251960	72.97061019300
18	26.31545158070	72.97620052850	56	26.29939879240	72.97471148130	94	26.31541472800	72.97067271460
19	26.31505692150	72.97533387970	57	26.29918932910	72.97376077770	95	26.31631518760	72.97070201590
20	26.31490146000	72.97438734540	58	26.29884468090	72.97293650870	96	26.31718891080	72.97094162800
21	26.31473257570	72.97340853090	59	26.29894643370	72.97195366240	97	26.31805072570	72.97090744860
22	26.31389214010	72.97326495400	60	26.29895871010	72.97098787900	98	26.31857819480	72.97014628710
23	26.31301011810	72.97334283150	61	26.29928600980	72.97008932320	99	26.31945914360	72.97007502250
24	26.31249341320	72.97360638260	62	26.30011803670	72.96976096650	100	26.32028899920	72.97035779690
25	26.31301204090	72.97440978390	63	26.30101672060	72.96984238000	101	26.32108233730	72.97078727780
26	26.31298720250	72.97538246440	64	26.30091977470	72.96923777400	102	26.32174675110	72.97125042030
27	26.31284589710	72.97634332290	65	26.30024216870	72.96871073980	103	26.32253597080	72.97171439160
28	26.31217413970	72.97696070330	66	26.29979330240	72.96787645890	104	26.32340982990	72.97194637920

29	26.31128565070	72.97697821110	67	26.30005901220	72.96694843640	105	26.32420842730	72.97237339470
30	26.31053220780	72.97675085170	68	26.30079451830	72.96644492660	106	26.32449391530	72.97330072480
31	26.31026495180	72.97764172300	69	26.30129356170	72.96562387230	107	26.32408035570	72.97414652440
32	26.30996361960	72.97856573510	70	26.30209928680	72.96523748740	108	26.32326608920	72.97451026770
33	26.31055127820	72.97906563880	71	26.30293290840	72.96555346530	109	26.32242577070	72.97418731310
34	26.31112713040	72.97981093900	72	26.30328605040	72.96644923110	110	26.32154312540	72.97400979940
35	26.31102994740	72.98076457680	73	26.30375030170	72.96714387560	111	26.32066282740	72.97414474160
36	26.31045556710	72.98151406150	74	26.30396714650	72.96808819760	112	26.31976884370	72.97408989080
37	26.30977890110	72.98214085210	75	26.30456024840	72.96864416730	113	26.31888956940	72.97394628000
38	26.30892696150	72.98197591490	76	26.30536984460	72.96841390070	114	26.31804082320	72.97362285840

The detailed Map of Kaylana Wetland and its Zone of Influence is annexed herewith as Schedule-I ('A').



Schedule-II

Prohibited Activities in Kaylana Lake Wetland :-

1. Conversion for non wetland uses including encroachments of any kind;
2. Setting up of any new industry and expansion of existing industries;
3. Manufacture or/and handling or/and storage or/and disposal of construction and demolition waste covered under the Construction and Demolition Waste Management Rules, 2016; hazardous substances covered under the Manufacture, Storage and Import of Hazardous Chemical Rules, 1989 or the Rules for Manufacture, Use, Import, Export and Storage of Hazardous Microorganism Genetically Engineered organized or cells, 1989 or the Hazardous Waste (Management, Handling and Transboundary Movement) Rules, 2008; electronic waste covered under the E-Waste (Management) Rules 2016; plastic waste covered under Plastic Waste (Management) Rules, 2016;
4. Solid waste storage and disposal;
5. Discharge of untreated waste and effluents from industries, cities, towns, villages and other human settlements;
6. Any construction of permanent nature except for boat jetties within fifty metres from the mean high flood level observed in the past ten years calculated from the date of commencement of these rules;
7. Commercial mining, stone quarrying and crushing units
8. Commercial water extraction Establishment of large scale commercial livestock and poultry farms;
9. Reducing area/ capacity of the water body;
10. Feeding of fishes and migratory birds by the public;
11. Any type of poaching.

Prohibited Activities in Catchment Area/Zone of Influence :-

1. Discharge of untreated Solid/liquid waste and effluents;
2. Manufacture or/and handling or/and storage or/and disposal of construction and demolition waste covered under the Construction and Demolition Waste Management Rules, 2016; hazardous substances covered under the Manufacture, Storage and Import of Hazardous Chemical Rules, 1989 or the Rules for Manufacture, Use, Import, Export and Storage of Hazardous Microorganism Genetically Engineered organized or cells, 1989 or the Hazardous Waste (Management, Handling and Transboundary Movement) Rules, 2008; electronic waste covered under the E-Waste (Management) Rules 2016; plastic waste covered under Plastic Waste (Management) Rules, 2016;

3. Extraction of commercial water including groundwater.
4. Any type of poaching;

Schedule-III

Regulated Activities in Kaylana Lake Wetland :-

1. Fisheries;
2. Plying of boats;
3. Desilting;
4. Construction of temporary structures;
5. Water extraction for certain purposes.

Regulated Activities in Catchment Area/Zone of Influence :-

1. Conversion of land for any type of construction;
2. Setting up of any new industries and expansion of existing industries;
3. Mining.

[F.No.6 (3) Env/2023]

By order of the Governor,

Shikhar Agrawal,

Additional Chief Secretary to the Government.

Government Central Press, Jaipur.