



सत्यमेव जयते

राजस्थान राजपत्र
विशेषांक

साधिकार प्रकाशित

RAJASTHAN GAZETTE
Extraordinary

Published by Authority

भाद्र 09, गुरुवार, शाके 1945-अगस्त 31, 2023
Bhadra 09, Thursday, Saka 1945- August 31, 2023

भाग 4 (ग)

उप-खण्ड (I)

राज्य सरकार तथा अन्य राज्य-प्राधिकारियों द्वारा जारी किये गये (सामान्य आदेशों, उप-विधियों आदि को सम्मिलित करते हुए) सामान्य कानूनी नियम।

Department of Environment and Climate Change
Notification

Jaipur, July 19, 2023

G.S.R.80 .-Whereas the draft notification of the Galwaniya wetland, situated in village Galwaniya, Tehsil Uniyara, district Tonk Rajasthan was published as required by rule 7 of the Wetland (Conservation and Management) Rules, 2017 read with the Environment (Protection) Act, 1986 (Central Act No. 29 of 1986), vide notification of the Department of Environment and Climate Change, number G.S.R. 13 dated 19.04.2023 in the Rajasthan Gazette, Extraordinary, Part 4 (ga), sub-part (II), inviting objections and suggestions from all persons likely to be affected thereby before expiry of the period of sixty days from the date on which the copies of the said notification were made available to the public.

And whereas, copies of the Gazette in which the said notification was published were made available to the public on the 19.04.2023.

And whereas, no objections and suggestions were received on the said Draft Notification.

Now therefore, in exercise of the powers conferred by rule 7 of the Wetland (Conservation and Management) Rules, 2017 read with provisions of the Environment (Protection) Act, 1986 (Central Act No. 29 of 1986), the State Government hereby notifies Galwaniya wetland, situated in village Galwaniya, Tehsil Uniyara, district Tonk Rajasthan as a wetland and that,-

- (i) the extent of the wetland/wetland complex and its zone of influence shall be as described in Schedule-I of this notification;
- (ii) the activities prohibited within the wetland and its zone of influence shall be as listed in Schedule-II of this notification;
- (iii) the activities regulated within the wetland and its zone of influence, i.e. permitted only with permission of the State Government shall be as listed in Schedule-III of this notification. Request for permission for regulated activities may be made to the District Environment Committee headed by the District Collector; and
- (iv) the State Wetland Authority, Rajasthan shall monitor the enforcement of the provisions of this notification.

Schedule-I

Galwaniya Wetland comprising of total area of 349.18 Hectare within the following boundary delineation:-

The geo-coordinates of Galwaniya Wetland of Tonk, Rajasthan

Galwaniya

S.no	Latitude	Longitude	S.no	Latitude	Longitude	S.no	Latitude	Longitude
1	25.87727977010	76.18416270790	33	25.86150045540	76.19253392480	65	25.86201689810	76.17702097130
2	25.87764536310	76.18502129530	34	25.86096572010	76.19172990090	66	25.86233593650	76.17609521200
3	25.87762015990	76.18600948280	35	25.86043098010	76.19092588420	67	25.86269487200	76.17519141880
4	25.87704655620	76.18672331730	36	25.85989623530	76.19012187470	68	25.86350704190	76.17493063420
5	25.87614848670	76.18664596430	37	25.85936148580	76.18931787230	69	25.86431082680	76.17479853250
6	25.87525623810	76.18650348400	38	25.85882673160	76.18851387700	70	25.86486527000	76.17414256510
7	25.87436113880	76.18657972140	39	25.85829197260	76.18770988890	71	25.86518102630	76.17497463490
8	25.87365666210	76.18709925850	40	25.85775720880	76.18690590800	72	25.86546576890	76.17588550580
9	25.87301494130	76.18779701240	41	25.85719562590	76.18612467160	73	25.86619677410	76.17645740470
10	25.87251707620	76.18862953830	42	25.85663148350	76.18534560890	74	25.86691671660	76.17705028220
11	25.87232099840	76.18959598070	43	25.85606733670	76.18456655360	75	25.86778119820	76.17691683930
12	25.87200596150	76.19052831800	44	25.85550318530	76.18378750560	76	25.86836523000	76.17630088490
13	25.87148429870	76.19134283720	45	25.85493902950	76.18300846490	77	25.86871510630	76.17538851390
14	25.87126656560	76.19230059820	46	25.85437486930	76.18222943160	78	25.86933246890	76.17506899980
15	25.87116112790	76.19325959620	47	25.85375836750	76.18150721760	79	25.86990927570	76.17573933290
16	25.87083370190	76.19402816160	48	25.85298258880	76.18100700810	80	25.86971620380	76.17670555490
17	25.87155631900	76.19456803290	49	25.85217434370	76.18056237890	81	25.87045417720	76.17719123800
18	25.87231414030	76.19476711570	50	25.85145893130	76.17998748160	82	25.87111678320	76.17668881280
19	25.87169622540	76.19522742530	51	25.85087071120	76.17923051720	83	25.87160083000	76.17585423700
20	25.87165267290	76.19622422860	52	25.85060642430	76.17847903550	84	25.87216291980	76.17507505130
21	25.87117210890	76.19673112290	53	25.85144090330	76.17881786250	85	25.87289754700	76.17519522850
22	25.87028866420	76.19652622100	54	25.85233595730	76.17894869520	86	25.87303024900	76.17617599760
23	25.86940561920	76.19631838310	55	25.85321962700	76.17889507400	87	25.87297753430	76.17717227280
24	25.86852257380	76.19611054850	56	25.85409031560	76.17863112760	88	25.87299355130	76.17816261260
25	25.86763952780	76.19590271730	57	25.85496100370	76.17836717770	89	25.87315207030	76.17914372620
26	25.86675648130	76.19569488950	58	25.85583360580	76.17811107940	90	25.87331253730	76.18012472180
27	25.86587343440	76.19548706500	59	25.85670646100	76.17785601830	91	25.87389858850	76.18063487500
28	25.86499221530	76.19527009980	60	25.85759305860	76.17767049630	92	25.87477459260	76.18087154260
29	25.86411217990	76.19504721640	61	25.85849038710	76.17760233230	93	25.87542103120	76.18151533850
30	25.86324199270	76.19479281170	62	25.85939299770	76.17757943400	94	25.87630173330	76.18171990350
31	25.86261397650	76.19410486160	63	25.86028508370	76.17743219220	95	25.87713241940	76.18206197360
32	25.86205408100	76.19332203320	64	25.86118455090	76.17734591440	96	25.87692951470	76.18294588310
						97	25.87631838700	76.18358068770

Details of Catchment Area/Zone of Influence of Galwaniya Wetland falling within the boundary limit of Tonk, Rajasthan:-

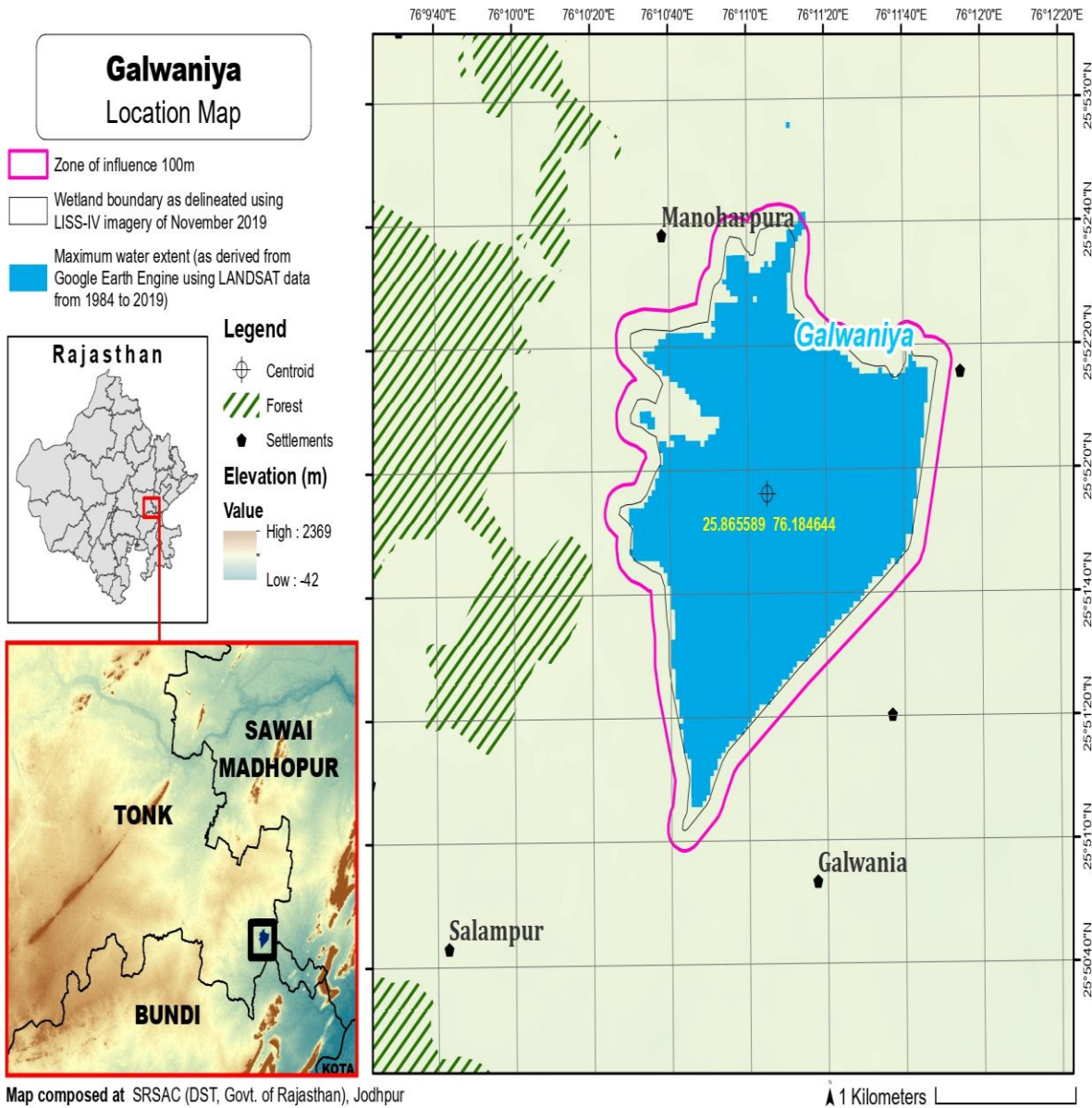
Total Area Of = 98.92

The geo-coordinates of Galwaniya Wetland and its Zone of influence

Galwaniya

S.no	Latitude	Longitude	S.no	Latitude	Longitude	S.no	Latitude	Longitude
1	25.87713094410	76.18771646050	34	25.85864934130	76.18993189910	67	25.86336367300	76.17391960470
2	25.87623046420	76.18767307800	35	25.85811459030	76.18912790620	68	25.86403796610	76.17346908860
3	25.87534004070	76.18750810810	36	25.85757983460	76.18832392040	69	25.86483808460	76.17310530680
4	25.87445279420	76.18759250330	37	25.85704507410	76.18751994180	70	25.86566166520	76.17348175760
5	25.87383113910	76.18831188620	38	25.85648373230	76.18673850570	71	25.86604614140	76.17437087360
6	25.87331612340	76.18912337670	39	25.85591959310	76.18595944500	72	25.86622801750	76.17531405140
7	25.87313815160	76.19010069410	40	25.85535544950	76.18518039170	73	25.86700198840	76.17582787710
8	25.87279072040	76.19102138300	41	25.85479130130	76.18440134580	74	25.86765197810	76.17565529680
9	25.87227290650	76.19183869830	42	25.85422714870	76.18362230720	75	25.86797144660	76.17472730000
10	25.87215706360	76.19282147330	43	25.85366299160	76.18284327590	76	25.86856987230	76.17403143490
11	25.87227456420	76.19358426530	44	25.85302566270	76.18214726380	77	25.86946246760	76.17401795270
12	25.87304688580	76.19404874700	45	25.85221869750	76.18169977980	78	25.87023618050	76.17452777660
13	25.87319497560	76.19499203740	46	25.85140661840	76.18126699540	79	25.87076544730	76.17529367200
14	25.87274407370	76.19582326600	47	25.85074521120	76.18060051580	80	25.87131139650	76.17467278610
15	25.87251663250	76.19669853340	48	25.85015699420	76.17984355320	81	25.87197174490	76.17402810770
16	25.87209117990	76.19756673840	49	25.84964957750	76.17902870280	82	25.87287035130	76.17399225560
17	25.87124776910	76.19778301320	50	25.84971685550	76.17807228280	83	25.87362072180	76.17449088820
18	25.87036697380	76.19756498060	51	25.85040005480	76.17748275450	84	25.87387097570	76.17544441290
19	25.86948393060	76.19735713490	52	25.85128418390	76.17763570520	85	25.87392065300	76.17643428920
20	25.86860088700	76.19714929250	53	25.85213505880	76.17791283390	86	25.87386909770	76.17743064490
21	25.86771784280	76.19694145340	54	25.85302249110	76.17792016470	87	25.87397239540	76.17841261910
22	25.86683479810	76.19673361780	55	25.85389317820	76.17765621150	88	25.87412110270	76.17939612550
23	25.86595175290	76.19652578550	56	25.85476386480	76.17739225460	89	25.87479988540	76.17984147070
24	25.86506960330	76.19631347300	57	25.85563655940	76.17713653490	90	25.87560136300	76.18027840320
25	25.86418956970	76.19609058170	58	25.85650941310	76.17688146650	91	25.87633759040	76.18071603520
26	25.86330953560	76.19586769400	59	25.85739600200	76.17669551470	92	25.87721312650	76.18094153770
27	25.86248432980	76.19547815040	60	25.85829201060	76.17660521610	93	25.87792300650	76.18154267580
28	25.86190209530	76.19471864280	61	25.85919464780	76.17658633710	94	25.87803177710	76.18250749100
29	25.86134220470	76.19393581510	62	25.86008753200	76.17644951710	95	25.87791645460	76.18341801040
30	25.86078829770	76.19314794220	63	25.86098699900	76.17636323180	96	25.87836953140	76.18424199250
31	25.86025356570	76.19234392070	64	25.86150698140	76.17569590630	97	25.87856993560	76.18520986600
32	25.85971882900	76.19153990630	65	25.86183905900	76.17477100360	98	25.87850668780	76.18619887930
33	25.85918408750	76.19073589910	66	25.86247851350	76.17407993970	99	25.87810164240	76.18705662540

The detailed Map of Galwaniya Wetland and its Zone of Influence is annexed herewith as Schedule-I ('A').



Galwaniya Wetland Complex comprising of total area of 349.18 Hectare within the following boundary delineation:-

The geo-coordinates of Galwaniya Wetland of Tonk, Rajasthan

Galwaniya

S.no	Latitude	Longitude	S.no	Latitude	Longitude	S.no	Latitude	Longitude
1	25.87727977010	76.18416270790	33	25.86150045540	76.19253392480	65	25.86201689810	76.17702097130
2	25.87764536310	76.18502129530	34	25.86096572010	76.19172990090	66	25.86233593650	76.17609521200
3	25.87762015990	76.18600948280	35	25.86043098010	76.19092588420	67	25.86269487200	76.17519141880
4	25.87704655620	76.18672331730	36	25.85989623530	76.19012187470	68	25.86350704190	76.17493063420
5	25.87614848670	76.18664596430	37	25.85936148580	76.18931787230	69	25.86431082680	76.17479853250
6	25.87525623810	76.18650348400	38	25.85882673160	76.18851387700	70	25.86486527000	76.17414256510
7	25.87436113880	76.18657972140	39	25.85829197260	76.18770988890	71	25.86518102630	76.17497463490
8	25.87365666210	76.18709925850	40	25.85775720880	76.18690590800	72	25.86546576890	76.17588550580
9	25.87301494130	76.18779701240	41	25.85719562590	76.18612467160	73	25.86619677410	76.17645740470
10	25.87251707620	76.18862953830	42	25.85663148350	76.18534560890	74	25.86691671660	76.17705028220
11	25.87232099840	76.18959598070	43	25.85606733670	76.18456655360	75	25.86778119820	76.17691683930
12	25.87200596150	76.19052831800	44	25.85550318530	76.18378750560	76	25.86836523000	76.17630088490
13	25.87148429870	76.19134283720	45	25.85493902950	76.18300846490	77	25.86871510630	76.17538851390
14	25.87126656560	76.19230059820	46	25.85437486930	76.18222943160	78	25.86933246890	76.17506899980
15	25.87116112790	76.19325959620	47	25.85375836750	76.18150721760	79	25.86990927570	76.17573933290
16	25.87083370190	76.19402816160	48	25.85298258880	76.18100700810	80	25.86971620380	76.17670555490
17	25.87155631900	76.19456803290	49	25.85217434370	76.18056237890	81	25.87045417720	76.17719123800
18	25.87231414030	76.19476711570	50	25.85145893130	76.17998748160	82	25.87111678320	76.17668881280
19	25.87169622540	76.19522742530	51	25.85087071120	76.17923051720	83	25.87160083000	76.17585423700
20	25.87165267290	76.19622422860	52	25.85060642430	76.17847903550	84	25.87216291980	76.17507505130
21	25.87117210890	76.19673112290	53	25.85144090330	76.17881786250	85	25.87289754700	76.17519522850
22	25.87028866420	76.19652622100	54	25.85233595730	76.17894869520	86	25.87303024900	76.17617599760
23	25.86940561920	76.19631838310	55	25.85321962700	76.17889507400	87	25.87297753430	76.17717227280
24	25.86852257380	76.19611054850	56	25.85409031560	76.17863112760	88	25.87299355130	76.17816261260
25	25.86763952780	76.19590271730	57	25.85496100370	76.17836717770	89	25.87315207030	76.17914372620
26	25.86675648130	76.19569488950	58	25.85583360580	76.17811107940	90	25.87331253730	76.18012472180
27	25.86587343440	76.19548706500	59	25.85670646100	76.17785601830	91	25.87389858850	76.18063487500
28	25.86499221530	76.19527009980	60	25.85759305860	76.17767049630	92	25.87477459260	76.18087154260
29	25.86411217990	76.19504721640	61	25.85849038710	76.17760233230	93	25.87542103120	76.18151533850
30	25.86324199270	76.19479281170	62	25.85939299770	76.17757943400	94	25.87630173330	76.18171990350
31	25.86261397650	76.19410486160	63	25.86028508370	76.17743219220	95	25.87713241940	76.18206197360
32	25.86205408100	76.19332203320	64	25.86118455090	76.17734591440	96	25.87692951470	76.18294588310
						97	25.87631838700	76.18358068770

Details of Catchment Area/Zone of Influence of Galwaniya Wetland falling within the boundary limit of Tonk, Rajasthan:-

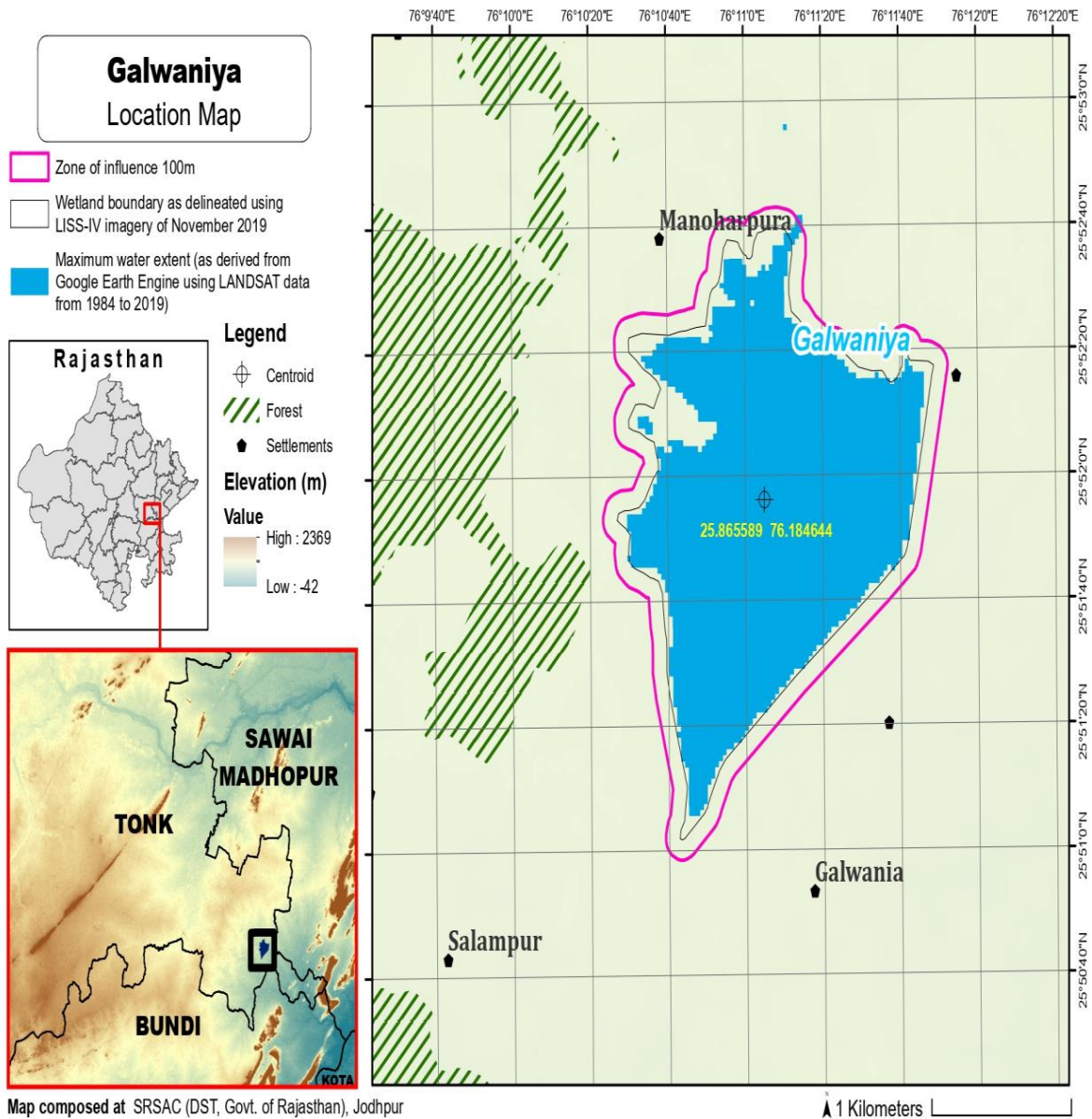
Total Area Of = 98.92

The geo-coordinates of Galwaniya Wetland and its Zone of influence

Galwaniya

S.no	Latitude	Longitude	S.no	Latitude	Longitude	S.no	Latitude	Longitude
1	25.87713094410	76.18771646050	34	25.85864934130	76.18993189910	67	25.86336367300	76.17391960470
2	25.87623046420	76.18767307800	35	25.85811459030	76.18912790620	68	25.86403796610	76.17346908860
3	25.87534004070	76.18750810810	36	25.85757983460	76.18832392040	69	25.86483808460	76.17310530680
4	25.87445279420	76.18759250330	37	25.85704507410	76.18751994180	70	25.86566166520	76.17348175760
5	25.87383113910	76.18831188620	38	25.85648373230	76.18673850570	71	25.86604614140	76.17437087360
6	25.87331612340	76.18912337670	39	25.85591959310	76.18595944500	72	25.86622801750	76.17531405140
7	25.87313815160	76.19010069410	40	25.85535544950	76.18518039170	73	25.86700198840	76.17582787710
8	25.87279072040	76.19102138300	41	25.85479130130	76.18440134580	74	25.86765197810	76.17565529680
9	25.87227290650	76.19183869830	42	25.85422714870	76.18362230720	75	25.86797144660	76.17472730000
10	25.87215706360	76.19282147330	43	25.85366299160	76.18284327590	76	25.86856987230	76.17403143490
11	25.87227456420	76.19358426530	44	25.85302566270	76.18214726380	77	25.86946246760	76.17401795270
12	25.87304688580	76.19404874700	45	25.85221869750	76.18169977980	78	25.87023618050	76.17452777660
13	25.87319497560	76.19499203740	46	25.85140661840	76.18126699540	79	25.87076544730	76.17529367200
14	25.87274407370	76.19582326600	47	25.85074521120	76.18060051580	80	25.87131139650	76.17467278610
15	25.87251663250	76.19669853340	48	25.85015699420	76.17984355320	81	25.87197174490	76.17402810770
16	25.87209117990	76.19756673840	49	25.84964957750	76.17902870280	82	25.87287035130	76.17399225560
17	25.87124776910	76.19778301320	50	25.84971685550	76.17807228280	83	25.87362072180	76.17449088820
18	25.87036697380	76.19756498060	51	25.85040005480	76.17748275450	84	25.87387097570	76.17544441290
19	25.86948393060	76.19735713490	52	25.85128418390	76.17763570520	85	25.87392065300	76.17643428920
20	25.86860088700	76.19714929250	53	25.85213505880	76.17791283390	86	25.87386909770	76.17743064490
21	25.86771784280	76.19694145340	54	25.85302249110	76.17792016470	87	25.87397239540	76.17841261910
22	25.86683479810	76.19673361780	55	25.85389317820	76.17765621150	88	25.87412110270	76.17939612550
23	25.86595175290	76.19652578550	56	25.85476386480	76.17739225460	89	25.87479988540	76.17984147070
24	25.86506960330	76.19631347300	57	25.85563655940	76.17713653490	90	25.87560136300	76.18027840320
25	25.86418956970	76.19609058170	58	25.85650941310	76.17688146650	91	25.87633759040	76.18071603520
26	25.86330953560	76.19586769400	59	25.85739600200	76.17669551470	92	25.87721312650	76.18094153770
27	25.86248432980	76.19547815040	60	25.85829201060	76.17660521610	93	25.87792300650	76.18154267580
28	25.86190209530	76.19471864280	61	25.85919464780	76.17658633710	94	25.87803177710	76.18250749100
29	25.86134220470	76.19393581510	62	25.86008753200	76.17644951710	95	25.87791645460	76.18341801040
30	25.86078829770	76.19314794220	63	25.86098699900	76.17636323180	96	25.87836953140	76.18424199250
31	25.86025356570	76.19234392070	64	25.86150698140	76.17569590630	97	25.87856993560	76.18520986600
32	25.85971882900	76.19153990630	65	25.86183905900	76.17477100360	98	25.87850668780	76.18619887930
33	25.85918408750	76.19073589910	66	25.86247851350	76.17407993970	99	25.87810164240	76.18705662540

The detailed Map of Galwaniya Wetland and its Zone of Influence is annexed herewith as Schedule-I ('A').



Schedule-II**Prohibited Activities in Galwaniya Wetland :-**

1. Conversion for non wetland uses including encroachments of any kind;
2. Setting up of any new industry and expansion of existing industries;
3. Manufacture or/and handling or/and storage or/and disposal of construction and demolition waste covered under the Construction and Demolition Waste Management Rules, 2016; hazardous substances covered under the Manufacture, Storage and Import of Hazardous Chemical Rules, 1989 or the Rules for Manufacture, Use, Import, Export and Storage of Hazardous Microorganism Genetically Engineered organized or cells, 1989 or the Hazardous Waste (Management, Handling and Transboundary Movement) Rules, 2008; electronic waste covered under the E-Waste (Management) Rules 2016; plastic waste covered under Plastic Waste (Management) Rules, 2016;
4. Solid waste storage and disposal;
5. Discharge of untreated waste and effluents from industries, cities, towns, villages and other human settlements;
6. Any construction of permanent nature except for boat jetties within fifty metres from the mean high flood level observed in the past ten years calculated from the date of commencement of these rules;
7. Commercial mining, stone quarrying and crushing units
8. Commercial water extraction Establishment of large scale commercial livestock and poultry farms;
9. Reducing area/ capacity of the water body;
10. Feeding of fishes and migratory birds by the public;
11. Any type of poaching.

Prohibited Activities in Catchment Area/Zone of Influence :-

1. Discharge of untreated Solid/liquid waste and effluents;
2. Manufacture or/and handling or/and storage or/and disposal of construction and demolition waste covered under the Construction and Demolition Waste Management Rules, 2016; hazardous substances covered under the Manufacture, Storage and Import of Hazardous Chemical Rules, 1989 or the Rules for Manufacture, Use, Import, Export and Storage of Hazardous Microorganism Genetically Engineered organized or cells, 1989 or the Hazardous Waste (Management, Handling and Transboundary Movement) Rules, 2008; electronic waste covered under the E-Waste (Management) Rules 2016; plastic waste covered under Plastic Waste (Management) Rules, 2016;
3. Extraction of commercial water including groundwater.
4. Any type of poaching;

Schedule-III**Regulated Activities in Galwaniya Wetland :-**

1. Fisheries;
2. Plying of boats;
3. Desilting;
4. Construction of temporary structures;
5. Water extraction for certain purposes.

Regulated Activities in Catchment Area/Zone of Influence :-

1. Conversion of land for any type of construction;

2. Setting up of any new industries and expansion of existing industries;
3. Mining.

[F.No.6 (3) Env/2023]

By order of the Governor,

Shikhar Agrawal,

Additional Chief Secretary to the Government.

Government Central Press, Jaipur.