



राजस्थान राजपत्र
विशेषांक

RAJASTHAN GAZETTE
Extraordinary

साधिकार प्रकाशित

Published by Authority

भाद्र 09, गुरुवार, शाके 1945-अगस्त 31, 2023
Bhadra 09, Thursday, Saka 1945- August 31, 2023

भाग 4 (ग)

उप-खण्ड (I)

राज्य सरकार तथा अन्य राज्य-प्राधिकारियों द्वारा जारी किये गये (सामान्य आदेशों, उप-विधियों आदि को सम्मिलित करते हुए) सामान्य कानूनी नियम।

Department of Environment and Climate Change
Notification

Jaipur, July 19, 2023

G.S.R.78 .-Whereas the draft notification of the Moti Sagar wetland, situated in village Dhuan Kalan, Tehsil Duni, district Tonk Rajasthan was published as required by rule 7 of the Wetland (Conservation and Management) Rules, 2017 read with the Environment (Protection) Act, 1986 (Central Act No. 29 of 1986), vide notification of the Department of Environment and Climate Change, number G.S.R. 12 dated 19.04.2023 in the Rajasthan Gazette, Extraordinary, Part 4 (ga), sub-part (II), inviting objections and suggestions from all persons likely to be affected thereby before expiry of the period of sixty days from the date on which the copies of the said notification were made available to the public.

And whereas, copies of the Gazette in which the said notification was published were made available to the public on the 19.04.2023.

And whereas, no objections and suggestions were received on the said Draft Notification.

Now therefore, in exercise of the powers conferred by rule 7 of the Wetland (Conservation and Management) Rules, 2017 read with provisions of the Environment (Protection) Act, 1986 (Central Act No. 29 of 1986), the State Government hereby notifies Moti Sagar wetland, situated in village Dhuan Kalan, Tehsil Duni, district Tonk Rajasthan as a wetland and that,-

- (i) the extent of the wetland/wetland complex and its zone of influence shall be as described in Schedule-I of this notification;
- (ii) the activities prohibited within the wetland and its zone of influence shall be as listed in Schedule-II of this notification;
- (iii) the activities regulated within the wetland and its zone of influence, i.e. permitted only with permission of the State Government shall be as listed in Schedule-III of this notification. Request for permission for regulated activities may be made to the District Environment Committee headed by the District Collector; and
- (iv) the State Wetland Authority, Rajasthan shall monitor the enforcement of the provisions of this notification.

Schedule-I

Moti Sagar Wetland comprising of total area of 729.46 Hectare within the following boundary delineation:-

The geo-coordinates of Moti Sagar Wetland of Tonk, Rajasthan

Motisagar Dam

S.no	Latitude	Longitude	S.no	Latitude	Longitude	S.no	Latitude	Longitude
1	25.89867517030	75.66536795750	57	25.92594669470	75.67078166110	114	25.90873656740	75.68436701560
2	25.89780367880	75.66513757730	58	25.92620015070	75.67173896390	115	25.90797777780	75.68383425570
3	25.89694043490	75.66484657690	59	25.92669540490	75.67244695220	116	25.90730832550	75.68316436060
4	25.89608218760	75.66455525070	60	25.92751071480	75.67287232110	117	25.90657668360	75.68266505420
5	25.89542971220	75.66392815460	61	25.92836731110	75.67302230050	118	25.90573476020	75.68236529250
6	25.89518987980	75.66300587140	62	25.92885754290	75.67379727150	119	25.90513445600	75.68162666400
7	25.89546385150	75.66211799740	63	25.92879022890	75.67477732930	120	25.90460893530	75.68081483450
8	25.89622188240	75.66157675760	64	25.92873973800	75.67576253480	121	25.90392739330	75.68017092500
9	25.89711089490	75.66147754460	65	25.92815292430	75.67651617470	122	25.90320199280	75.67958118670
10	25.89797275330	75.66173268580	66	25.92751471430	75.67721928920	123	25.90275883340	75.67872463420
11	25.89887131980	75.66181957190	67	25.92690034150	75.67792946010	124	25.90234410150	75.67785532010
12	25.89976771510	75.66191752140	68	25.92616952100	75.67848996010	125	25.90165067400	75.67725681640
13	25.90066047730	75.66206706170	69	25.92602573770	75.67937426600	126	25.90079434570	75.67694224650
14	25.90146262920	75.66233503380	70	25.92624306280	75.68033509130	127	25.89991650560	75.67672120060
15	25.90191043670	75.66170219200	71	25.92615910650	75.68131283840	128	25.89908230400	75.67646297670
16	25.90187474720	75.66073105630	72	25.92629309960	75.68216457610	129	25.89910904030	75.67552344680
17	25.90186209470	75.65973528920	73	25.92659334670	75.68306208200	130	25.89921770210	75.67453372590
18	25.90220595960	75.65884081060	74	25.92636085710	75.68402383590	131	25.89915420980	75.67353967500
19	25.90227721690	75.65788821440	75	25.92609727540	75.68497704000	132	25.89864571030	75.67276368860
20	25.90188143600	75.65699580090	76	25.92566932090	75.68585433370	133	25.89780766750	75.67240488710
21	25.90182520760	75.65605575070	77	25.92495835160	75.68646988410	134	25.89700593410	75.67279017020
22	25.90261700900	75.65572410590	78	25.92425649690	75.68709797540	135	25.89658301630	75.67366435070
23	25.90350282140	75.65589757220	79	25.92352696550	75.68768026440	136	25.89616071420	75.67454327300
24	25.90438819810	75.65600079950	80	25.92271399260	75.68745240700	137	25.89587786490	75.67546627180
25	25.90527372770	75.65581914310	81	25.92197900870	75.68791773260	138	25.89517274800	75.67516679590
26	25.90615772770	75.65595947540	82	25.92144812850	75.68872542010	139	25.89494725690	75.67420016460
27	25.90679844480	75.65664384060	83	25.92103284460	75.68960643460	140	25.89459826580	75.67329782960
28	25.90733265120	75.65744673460	84	25.92047150420	75.69018373430	141	25.89382690460	75.67278897070
29	25.90793966380	75.65818586260	85	25.91983121360	75.69071935770	142	25.89313787090	75.67214419260
30	25.90848223610	75.65898059180	86	25.91985313920	75.69168927600	143	25.89271297170	75.67129179720
31	25.90898307290	75.65981133220	87	25.92036175700	75.69247478870	144	25.89278222170	75.67029968870
32	25.90948390470	75.66064207960	88	25.91964052110	75.69271601480	145	25.89222764000	75.66963754990
33	25.91005250080	75.66140726130	89	25.91881476840	75.69256192270	146	25.89177419330	75.66881200910
34	25.91073074350	75.66206635430	90	25.91826800570	75.69323043920	147	25.89096001650	75.66869871930
35	25.91140898290	75.66272545480	91	25.91808899170	75.69420781460	148	25.89009474730	75.66898343580
36	25.91207076200	75.66340195970	92	25.91775144250	75.69513016170	149	25.88920996740	75.66909832470
37	25.91263574250	75.66418079310	93	25.91705710190	75.69561159060	150	25.88886745960	75.66838227870
38	25.91320071860	75.66495963390	94	25.91639541610	75.69499133110	151	25.88954599790	75.66775041240

39	25.91376569030	75.66573848210	95	25.91553113760	75.69519591580	152	25.89029006930	75.66718636940
40	25.91448598260	75.66630676860	96	25.91496724830	75.69445531430	153	25.89112020570	75.66686020950
41	25.91520995180	75.66685947950	97	25.91458605030	75.69356565060	154	25.89202025970	75.66680187670
42	25.91563822210	75.66772432970	98	25.91459289510	75.69256891360	155	25.89284270980	75.66712443480
43	25.91635669990	75.66821155310	99	25.91469572010	75.69157831450	156	25.89340782560	75.66789161750
44	25.91723256510	75.66841850010	100	25.91525683810	75.69090962100	157	25.89391891530	75.66871406340
45	25.91806682930	75.66871858190	101	25.91589235020	75.69030747670	158	25.89421921560	75.66963715270
46	25.91887930550	75.66911828550	102	25.91592794810	75.68937872040	159	25.89464779050	75.67048454070
47	25.91976059590	75.66896150560	103	25.91521015090	75.68880982440	160	25.89511766780	75.67121910070
48	25.92056272050	75.66854603000	104	25.91442889140	75.68831990720	161	25.89558257420	75.67055782560
49	25.92107987780	75.66774491710	105	25.91356385060	75.68803564810	162	25.89600940900	75.66969023660
50	25.92164744030	75.66718286070	106	25.91270453630	75.68772940810	163	25.89686940670	75.66974794720
51	25.92252397460	75.66740882660	107	25.91186765920	75.68744986200	164	25.89749283570	75.67043778040
52	25.92309206920	75.66808326550	108	25.91181370500	75.68651398920	165	25.89815881880	75.67018370500
53	25.92375690900	75.66873622220	109	25.91224384070	75.68563878560	166	25.89785209760	75.66933385710
54	25.92433597200	75.66948865710	110	25.91221729540	75.68466085980	167	25.89786318160	75.66839939090
55	25.92503312190	75.66936267610	111	25.91136387830	75.68443146710	168	25.89855486690	75.66781336850
56	25.92563272520	75.66984570420	112	25.91049676290	75.68466550960	169	25.89918091420	75.66709973380
			113	25.90959445180	75.68462810890	170	25.89939425260	75.66617668570

Details of Catchment Area/Zone of Influence of Moti Sagar Wetland falling within the boundary limit of Tonk, Rajasthan:-

Total Area Of = 170.53

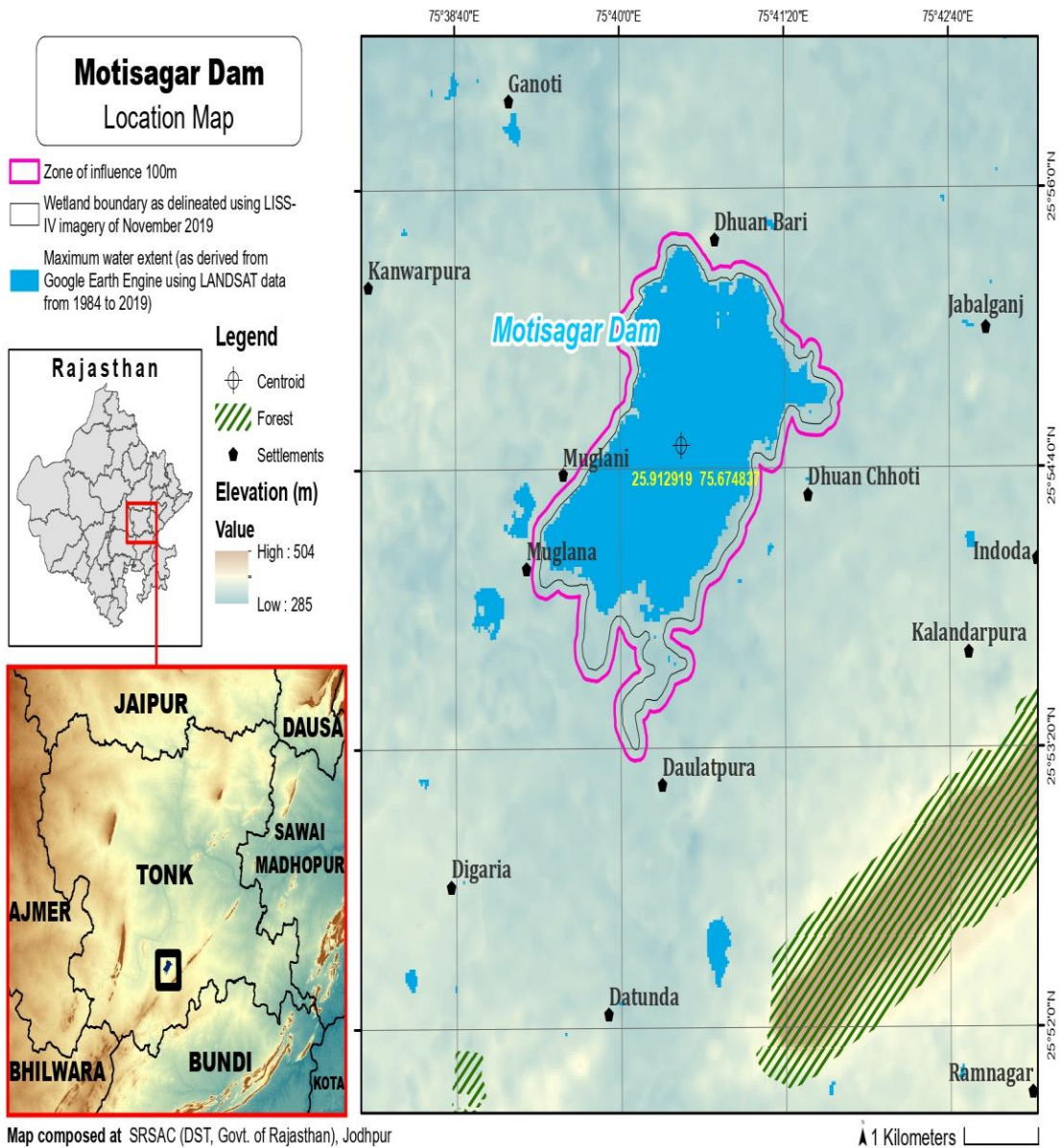
The geo-coordinates of Moti Sagar Wetland and its Zone of influence

Motisagar Dam

S.no	Latitude	Longitude	S.no	Latitude	Longitude	S.no	Latitude	Longitude
1	25.92697691850	75.67963222520	57	25.90164809020	75.67849203030	113	25.89960622410	75.66088075750
2	25.92713819360	75.68060047820	58	25.90088273460	75.67801774160	114	25.90049898750	75.66103028980
3	25.92705117940	75.68158789020	59	25.90001597490	75.67774054760	115	25.90097030810	75.66072363860
4	25.92744905410	75.68245474980	60	25.89912535530	75.67758216730	116	25.90095326350	75.65972722400
5	25.92744940830	75.68344477260	61	25.89836787530	75.67710147540	117	25.90116794780	75.65876297960
6	25.92720148430	75.68440494680	62	25.89804626040	75.67618008850	118	25.90129026140	75.65788352070
7	25.92693617260	75.68535822000	63	25.89824170780	75.67520888910	119	25.90088511360	75.65699202330
8	25.92651429170	75.68624106710	64	25.89830785010	75.67421694130	120	25.90089147040	75.65601383240
9	25.92588244880	75.68693796870	65	25.89785915510	75.67349284140	121	25.90129890540	75.65514167610
10	25.92517338540	75.68755614290	66	25.89736491820	75.67416402130	122	25.90214062890	75.65481415000
11	25.92446935590	75.68818079270	67	25.89697885040	75.67505865200	123	25.90303429850	75.65475673300
12	25.92368948260	75.68866270000	68	25.89666511950	75.67597755250	124	25.90391218050	75.65498432540
13	25.92281612800	75.68855854280	69	25.89593174230	75.67651884850	125	25.90480054480	75.65490180360
14	25.92225968690	75.68918957210	70	25.89505311750	75.67641691320	126	25.90569439970	75.65486194610
15	25.92183540220	75.69006507940	71	25.89439509770	75.67575717630	127	25.90656998480	75.65505991850
16	25.92139445880	75.69092940410	72	25.89415432090	75.67479590810	128	25.90728260030	75.65566977490
17	25.92072347670	75.69136164590	73	25.89381134720	75.67392162370	129	25.90779821870	75.65648917070

18	25.92123041030	75.69216015030	74	25.89305813010	75.67337832670	130	25.90838645010	75.65724475140
19	25.92110450840	75.69310931360	75	25.89239083600	75.67270923730	131	25.90897589560	75.65799943770
20	25.92041602090	75.69370788100	76	25.89189232570	75.67188195370	132	25.90947673800	75.65883017760
21	25.91953299120	75.69371823230	77	25.89181094070	75.67089259130	133	25.90997757540	75.65966092450
22	25.91904830820	75.69404168440	78	25.89137285480	75.67016913600	134	25.91047840790	75.66049167830
23	25.91880260310	75.69500011420	79	25.89073397720	75.66982091480	135	25.91115651310	75.66115090560
24	25.91838953360	75.69588447260	80	25.88986456110	75.67009027860	136	25.91183475650	75.66181000370
25	25.91771523640	75.69653440660	81	25.88896740550	75.67006094370	137	25.91251299670	75.66246910930
26	25.91682420000	75.69658734570	82	25.88817536680	75.66961185410	138	25.91310010350	75.66322523440
27	25.91608232550	75.69614359390	83	25.88792597310	75.66867361450	139	25.91366508470	75.66400407390
28	25.91519314530	75.69612526650	84	25.88815961090	75.66772809660	140	25.91423006160	75.66478292070
29	25.91447947630	75.69553139820	85	25.88883194690	75.66707252240	141	25.91490000820	75.66541946230
30	25.91405096020	75.69465526290	86	25.88957490590	75.66650551580	142	25.91568776840	75.66590288560
31	25.91369359740	75.69375323020	87	25.89036175460	75.66601843620	143	25.91620333690	75.66671956680
32	25.91368098530	75.69275664280	88	25.89123787430	75.66585248190	144	25.91683008900	75.66732469870
33	25.91374848960	75.69176143370	89	25.89213851840	75.66580426920	145	25.91771610440	75.66747637040
34	25.91394388060	75.69078972050	90	25.89300108340	75.66604359670	146	25.91853585300	75.66785637350
35	25.91461902070	75.69015314240	91	25.89371059710	75.66665184920	147	25.91936423700	75.66803991380
36	25.91474941480	75.68966878450	92	25.89423033670	75.66746342170	148	25.92014380210	75.66759571740
37	25.91395448500	75.68921384050	93	25.89474356700	75.66828439250	149	25.92052749350	75.66669244450
38	25.91309374880	75.68891368540	94	25.89508576920	75.66918598160	150	25.92126543990	75.66615397490
39	25.91223187150	75.68861693580	95	25.89575271570	75.66873391400	151	25.92214063920	75.66630682260
40	25.91137373280	75.68833787650	96	25.89664583000	75.66861620050	152	25.92301847360	75.66653188820
41	25.91088790040	75.68751067200	97	25.89706652270	75.66792001750	153	25.92368543980	75.66717860390
42	25.91087640940	75.68654059640	98	25.89765767620	75.66718414780	154	25.92429960560	75.66789059570
43	25.91123267630	75.68563324350	99	25.89838344070	75.66661548920	155	25.92491791740	75.66833846940
44	25.91064137410	75.68566574680	100	25.89783992830	75.66616290310	156	25.92578808630	75.66846872500
45	25.90973905150	75.68563320790	101	25.89697248250	75.66589083050	157	25.92636477170	75.66919375620
46	25.90884473450	75.68550892750	102	25.89609563640	75.66565432050	158	25.92669481080	75.67012289270
47	25.90803665650	75.68507596310	103	25.89527911750	75.66523064980	159	25.92698069500	75.67106972460
48	25.90730273470	75.68450376600	104	25.89468852760	75.66450551830	160	25.92750386340	75.67175735030
49	25.90663201840	75.68383541460	105	25.89428775070	75.66361256570	161	25.92835343250	75.67200164920
50	25.90581218520	75.68351224380	106	25.89432248910	75.66262266350	162	25.92917518280	75.67238313400
51	25.90503169300	75.68302294930	107	25.89455532060	75.66167284810	163	25.92962864890	75.67323189700
52	25.90444069180	75.68226948160	108	25.89526338200	75.66106001400	164	25.92978224230	75.67420283970
53	25.90391447430	75.68145820830	109	25.89604921990	75.66057617880	165	25.92968796980	75.67518944150
54	25.90320611540	75.68085045640	110	25.89694475550	75.66046869450	166	25.92957509160	75.67616856800
55	25.90250010850	75.68023093300	111	25.89781888020	75.66066898170	167	25.92901176630	75.67694196050
56	25.90204052760	75.67938017460	112	25.89870693770	75.66082002580	168	25.92840584330	75.67768120460
						169	25.9277756240	75.67838979610

The detailed Map of Moti Sagar Wetland and its Zone of Influence is annexed herewith as Schedule-I ('A').



Schedule-II**Prohibited Activities in Moti Sagar Dam Wetland :-**

1. Conversion for non wetland uses including encroachments of any kind;
2. Setting up of any new industry and expansion of existing industries;
3. Manufacture or/and handling or/and storage or/and disposal of construction and demolition waste covered under the Construction and Demolition Waste Management Rules, 2016; hazardous substances covered under the Manufacture, Storage and Import of Hazardous Chemical Rules, 1989 or the Rules for Manufacture, Use, Import, Export and Storage of Hazardous Microorganism Genetically Engineered organized or cells, 1989 or the Hazardous Waste (Management, Handling and Transboundary Movement) Rules, 2008; electronic waste covered under the E-Waste (Management) Rules 2016; plastic waste covered under Plastic Waste (Management) Rules, 2016;
4. Solid waste storage and disposal;
5. Discharge of untreated waste and effluents from industries, cities, towns, villages and other human settlements;
6. Any construction of permanent nature except for boat jetties within fifty metres from the mean high flood level observed in the past ten years calculated from the date of commencement of these rules;
7. Commercial mining, stone quarrying and crushing units
8. Commercial water extraction Establishment of large scale commercial livestock and poultry farms;
9. Reducing area/ capacity of the water body;
10. Feeding of fishes and migratory birds by the public;
11. Any type of poaching.

Prohibited Activities in Catchment Area/Zone of Influence :-

1. Discharge of untreated Solid/liquid waste and effluents;
2. Manufacture or/and handling or/and storage or/and disposal of construction and demolition waste covered under the Construction and Demolition Waste Management Rules, 2016; hazardous substances covered under the Manufacture, Storage and Import of Hazardous Chemical Rules, 1989 or the Rules for Manufacture, Use, Import, Export and Storage of Hazardous Microorganism Genetically Engineered organized or cells, 1989 or the Hazardous Waste (Management, Handling and Transboundary Movement) Rules, 2008; electronic waste covered under the E-Waste (Management) Rules 2016; plastic waste covered under Plastic Waste (Management) Rules, 2016;
3. Extraction of commercial water including groundwater.
4. Any type of poaching;

Schedule-III**Regulated Activities in Moti Sagar Dam Wetland :-**

1. Fisheries;
2. Plying of boats;
3. Desilting;
4. Construction of temporary structures;
5. Water extraction for certain purposes.

Regulated Activities in Catchment Area/Zone of Influence :-

1. Conversion of land for any type of construction;
2. Setting up of any new industries and expansion of existing industries;
3. Mining.

[F.No.6 (3) Env/2023]
By order of the Governor,

Shikhar Agrawal,
Additional Chief Secretary to the Government.

Government Central Press, Jaipur.