 सत्यमेव जयते	राजस्थान राजपत्र विशेषांक	RAJASTHAN GAZETTE Extraordinary
	साधिकार प्रकाशित	Published by Authority
	वैशाख 04, सोमवार, शाके 1945-अप्रैल 24, 2023 <i>Vaisakha 04, Monday, Saka 1945- April 24, 2023</i>	

भाग 4 (ग)

उप-खण्ड(II)

राज्य सरकार तथा अन्य राज्य प्राधिकारियों द्वारा जारी किये गये कानूनी आदेश तथा अधिसूचनाएं।

Department of Environment and Climate Change

Notification

Jaipur, March 21, 2023

S.O.25 .- The following draft of the notification, which the State Government proposes to issue in exercise of the powers conferred by rule 7 of the Wetland (Conservation and Management) Rules, 2017 read with Environment (Protection) Act, 1986 (Central Act No. 29 of 1986), is hereby published for the information of the persons likely to be concerned or affected thereby and notice is hereby given to them that the said draft notification shall be taken into consideration after the expiry of a period of sixty days from the date on which copies of this notification as published in the Official Gazette are made available to the public.

Any person interested in making any objection or suggestion on the proposals contained in the draft notification may forward the same in writing for consideration to the State Government within the period of 60 days as specified above to the Director cum Joint Secretary, Department of Environment and Climate Change Room No. 8240 SSO Building, Government Secretariat, Jaipur, Rajasthan or at env_raj@yahoo.co.in.

Draft Notification

WHEREAS, the Kanwas Pakshi Vihar Wetland, situated in Kanwas village of Kanwas Tehsil in Kota district of Rajasthan, is considered to be critically significant for its ecosystem services and biodiversity values for the local communities and society at large;

AND WHEREAS, it is considered that for sustaining the said values, the ecological character of wetland ecosystem needs to be maintained by regulating developmental activities within the wetland as well as within its zone of influence;

NOW THEREFORE, the State Government declares that the Kanwas Pakshi Vihar wetland shall be covered under the provisions of the Wetlands (Conservation and Management) Rules, 2017 and notifies that,-

- (i) the extent of the wetland /wetland complex and its zone of influence shall be as described in Schedule-I of this notification;
- (ii) the activities prohibited within the wetland and its zone of influence shall be as listed in Schedule-II of this notification;
- (iii) the activities regulated within the wetland and its zone of influence, i.e. permitted only with permission of the State Government shall be as listed in Schedule-III of this notification. Request for permission for regulated activities may be made to the District Environment Committee headed by the District Collector; and
- (iv) the State Wetland Authority, Rajasthan shall monitor the enforcement of the provisions of this notification.

Schedule-I

The geo-coordinates of Pakshi Vihar Kanwas Wetland of Kota, Rajasthan

Total Wetland Area = 895.99 Hact.

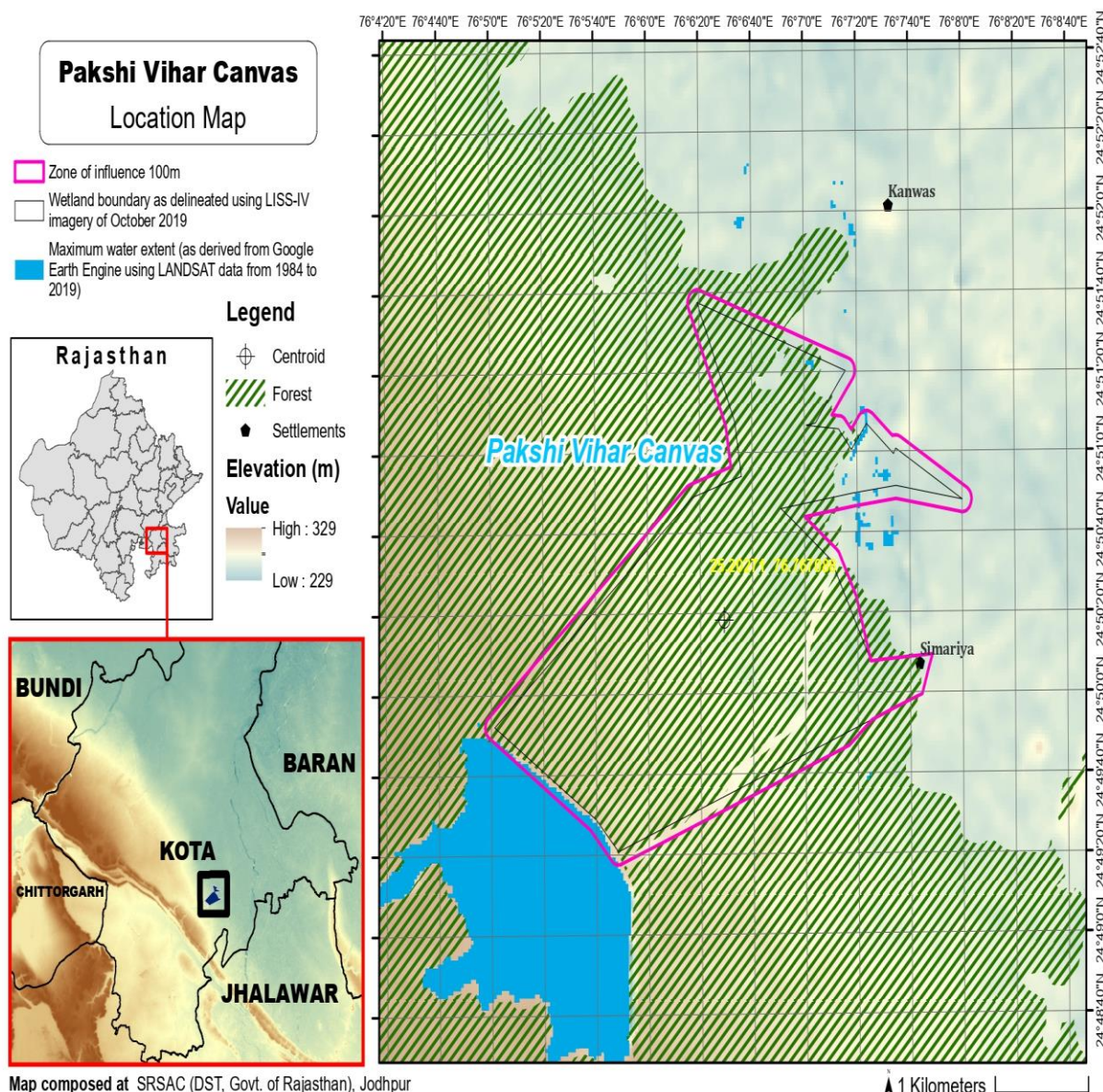
Pakshi Vihar Kanwas								
S.no	Latitude	Longitude	S.no	Latitude	Longitude	S.no	Latitude	Longitude
1	24.860108	76.106265	63	24.845990	76.114250	125	24.823848	76.095235
2	24.859821	76.107203	64	24.845452	76.115045	126	24.824505	76.094556
3	24.859535	76.108142	65	24.844913	76.115839	127	24.825041	76.093766
4	24.859248	76.109081	66	24.844375	76.116634	128	24.825538	76.092940
5	24.858962	76.110019	67	24.843836	76.117428	129	24.826034	76.092113
6	24.858675	76.110958	68	24.843298	76.118223	130	24.826531	76.091287
7	24.858389	76.111896	69	24.842760	76.119017	131	24.827028	76.090461
8	24.858102	76.112835	70	24.842083	76.119636	132	24.827525	76.089634
9	24.857816	76.113773	71	24.841289	76.120107	133	24.828021	76.088808
10	24.857529	76.114712	72	24.840494	76.120579	134	24.828518	76.087982
11	24.857243	76.115650	73	24.839700	76.121050	135	24.829015	76.087156
12	24.856956	76.116589	74	24.838906	76.121521	136	24.829512	76.086329
13	24.856669	76.117527	75	24.838112	76.121992	137	24.830008	76.085503
14	24.856383	76.118466	76	24.837318	76.122463	138	24.830505	76.084677
15	24.856096	76.119405	77	24.836524	76.122934	139	24.831002	76.083850
16	24.855810	76.120343	78	24.835730	76.123405	140	24.831557	76.084245
17	24.855394	76.120799	79	24.835535	76.124234	141	24.832131	76.085009
18	24.854692	76.120177	80	24.835604	76.125221	142	24.832704	76.085774
19	24.853989	76.119555	81	24.835673	76.126208	143	24.833278	76.086538
20	24.853287	76.118933	82	24.835742	76.127194	144	24.833851	76.087302
21	24.852584	76.118312	83	24.835811	76.128181	145	24.834425	76.088067
22	24.851972	76.117630	84	24.835880	76.129167	146	24.834998	76.088831
23	24.851815	76.117035	85	24.835859	76.130024	147	24.835572	76.089595
24	24.851742	76.118021	86	24.835011	76.129684	148	24.836145	76.090360
25	24.851669	76.119007	87	24.834163	76.129344	149	24.836719	76.091124
26	24.851596	76.119994	88	24.833315	76.129004	150	24.837292	76.091889
27	24.851069	76.120726	89	24.832923	76.128166	151	24.837866	76.092653
28	24.850383	76.121369	90	24.832614	76.127236	152	24.838439	76.093417
29	24.850583	76.122004	91	24.832306	76.126306	153	24.839012	76.094182
30	24.851279	76.122634	92	24.831998	76.125376	154	24.839586	76.094946
31	24.851859	76.123278	93	24.831688	76.124446	155	24.840159	76.095711
32	24.851292	76.124048	94	24.831379	76.123517	156	24.840733	76.096475
33	24.850725	76.124819	95	24.831069	76.122587	157	24.841306	76.097239
34	24.850158	76.125589	96	24.830760	76.121657	158	24.841879	76.098004
35	24.850135	76.126237	97	24.830450	76.120728	159	24.842453	76.098768
36	24.849797	76.127069	98	24.830141	76.119798	160	24.843026	76.099533
37	24.849358	76.127933	99	24.829832	76.118869	161	24.843600	76.100297
38	24.848918	76.128798	100	24.829522	76.117939	162	24.844173	76.101062
39	24.848479	76.129663	101	24.829213	76.117010	163	24.844746	76.101826
40	24.848040	76.130527	102	24.828903	76.116080	164	24.845320	76.102591

41	24.847601	76.131392	103	24.828594	76.115151	165	24.845893	76.103355
42	24.847161	76.132257	104	24.828284	76.114221	166	24.846467	76.104120
43	24.846722	76.133121	105	24.827975	76.113291	167	24.846983	76.104917
44	24.846745	76.132507	106	24.827665	76.112362	168	24.847245	76.105865
45	24.846883	76.131529	107	24.827356	76.111432	169	24.847507	76.106812
46	24.847020	76.130551	108	24.827046	76.110503	170	24.847769	76.107759
47	24.847157	76.129573	109	24.826737	76.109573	171	24.848031	76.108706
48	24.847294	76.128595	110	24.826427	76.108644	172	24.848292	76.109653
49	24.847431	76.127617	111	24.826118	76.107714	173	24.849005	76.109808
50	24.847568	76.126639	112	24.825808	76.106785	174	24.849896	76.109648
51	24.847540	76.125658	113	24.825499	76.105855	175	24.850787	76.109488
52	24.847430	76.124675	114	24.825189	76.104926	176	24.851678	76.109329
53	24.847320	76.123693	115	24.824880	76.103996	177	24.852538	76.109050
54	24.847210	76.122711	116	24.824570	76.103067	178	24.853366	76.108657
55	24.847100	76.121729	117	24.824261	76.102137	179	24.854195	76.108264
56	24.846972	76.120749	118	24.823951	76.101208	180	24.855024	76.107871
57	24.846843	76.119770	119	24.823642	76.100278	181	24.855853	76.107479
58	24.846715	76.118790	120	24.823332	76.099349	182	24.856682	76.107086
59	24.846587	76.117810	121	24.823023	76.098420	183	24.857511	76.106693
60	24.846458	76.116831	122	24.822713	76.097490	184	24.858339	76.106300
61	24.846330	76.115851	123	24.822536	76.096595	185	24.859168	76.105907
62	24.846201	76.114872	124	24.823192	76.095915	186	24.859997	76.105515

The geo-coordinates of Zone of Influence of Pakshi Vihar Kanwas Wetland of Kota, Rajasthan, Total Area of Zone of Influence = 144.54 Hact.

Pakshi Vihar Kanwas								
S.no	Latitude	Longitude	S.no	Latitude	Longitude	S.no	Latitude	Longitude
1	76.096089	24.821727	62	76.105523	24.857704	123	76.119631	24.845913
2	76.095401	24.822375	63	76.105130	24.858533	124	76.118651	24.845784
3	76.094721	24.823031	64	76.104737	24.859362	125	76.117672	24.845656
4	76.094041	24.823687	65	76.104361	24.860197	126	76.116692	24.845528
5	76.093278	24.824253	66	76.104623	24.861028	127	76.117335	24.845024
6	76.092452	24.824750	67	76.105532	24.861277	128	76.118130	24.844486
7	76.091626	24.825246	68	76.106472	24.860997	129	76.118924	24.843947
8	76.090799	24.825743	69	76.107411	24.860710	130	76.119718	24.843409
9	76.089973	24.826240	70	76.108349	24.860424	131	76.120367	24.842747
10	76.089147	24.826737	71	76.109288	24.860137	132	76.120838	24.841953
11	76.088321	24.827233	72	76.110226	24.859851	133	76.121310	24.841159
12	76.087494	24.827730	73	76.111165	24.859564	134	76.121781	24.840365
13	76.086668	24.828227	74	76.112104	24.859278	135	76.122159	24.839535
14	76.085842	24.828723	75	76.113042	24.858991	136	76.122455	24.838673
15	76.085015	24.829220	76	76.113981	24.858705	137	76.122751	24.837812
16	76.084189	24.829717	77	76.114919	24.858418	138	76.123047	24.836950
17	76.083363	24.830214	78	76.115858	24.858131	139	76.123343	24.836088
18	76.082710	24.830860	79	76.116796	24.857845	140	76.123848	24.835508

19	76.082909	24.831707	80	76.117735	24.857558	141	76.124834	24.835577
20	76.083663	24.832290	81	76.118673	24.857272	142	76.125821	24.835646
21	76.084427	24.832863	82	76.119612	24.856985	143	76.126808	24.835715
22	76.085192	24.833437	83	76.120550	24.856699	144	76.127794	24.835784
23	76.085956	24.834010	84	76.121481	24.856395	145	76.128781	24.835853
24	76.086720	24.834584	85	76.121979	24.855658	146	76.129767	24.835921
25	76.087485	24.835157	86	76.121594	24.854855	147	76.129818	24.835343
26	76.088249	24.835731	87	76.120972	24.854153	148	76.129477	24.834495
27	76.089014	24.836304	88	76.120350	24.853450	149	76.129137	24.833647
28	76.089778	24.836878	89	76.119728	24.852748	150	76.128530	24.833044
29	76.090542	24.837451	90	76.120229	24.852485	151	76.127600	24.832735
30	76.091307	24.838025	91	76.121077	24.852085	152	76.126670	24.832427
31	76.092071	24.838598	92	76.121717	24.851684	153	76.125740	24.832118
32	76.092836	24.839171	93	76.122347	24.852380	154	76.124810	24.831809
33	76.093600	24.839745	94	76.123174	24.852813	155	76.123881	24.831500
34	76.094364	24.840318	95	76.124050	24.852450	156	76.123065	24.831005
35	76.095129	24.840892	96	76.124821	24.851883	157	76.122292	24.830442
36	76.095893	24.841465	97	76.125591	24.851317	158	76.121519	24.829878
37	76.096658	24.842039	98	76.126471	24.851084	159	76.120654	24.829465
38	76.097422	24.842612	99	76.127354	24.850685	160	76.119724	24.829155
39	76.098187	24.843185	100	76.128219	24.850246	161	76.118795	24.828846
40	76.098951	24.843759	101	76.129084	24.849807	162	76.117865	24.828536
41	76.099716	24.844332	102	76.129948	24.849367	163	76.116935	24.828227
42	76.100480	24.844906	103	76.130813	24.848928	164	76.116006	24.827917
43	76.101244	24.845479	104	76.131678	24.848489	165	76.115076	24.827608
44	76.102009	24.846052	105	76.132542	24.848050	166	76.114147	24.827298
45	76.102773	24.846626	106	76.133407	24.847611	167	76.113217	24.826989
46	76.103538	24.847199	107	76.134166	24.847057	168	76.112288	24.826679
47	76.104319	24.847750	108	76.134154	24.846192	169	76.111358	24.826370
48	76.105262	24.848022	109	76.133348	24.845735	170	76.110429	24.826061
49	76.106210	24.848284	110	76.132368	24.845851	171	76.109499	24.825751
50	76.107157	24.848546	111	76.131390	24.845988	172	76.108570	24.825442
51	76.108104	24.848808	112	76.130412	24.846126	173	76.107640	24.825132
52	76.108764	24.849233	113	76.129434	24.846263	174	76.106711	24.824822
53	76.108604	24.850124	114	76.128456	24.846400	175	76.105781	24.824513
54	76.108445	24.851015	115	76.127478	24.846537	176	76.104852	24.824203
55	76.108272	24.851903	116	76.126500	24.846674	177	76.103922	24.823894
56	76.107880	24.852731	117	76.125518	24.846614	178	76.102993	24.823584
57	76.107487	24.853560	118	76.124536	24.846504	179	76.102063	24.823275
58	76.107094	24.854389	119	76.123554	24.846394	180	76.101134	24.822965
59	76.106701	24.855218	120	76.122571	24.846284	181	76.100204	24.822656
60	76.106308	24.856047	121	76.121590	24.846170	182	76.099275	24.822346
61	76.105916	24.856876	122	76.120610	24.846041	183	76.098346	24.822037
						184	76.097416	24.821727



Schedule-II

Prohibited Activities in Kanwas Pakshi Vihar Wetland:-

1. Conversion for non wetland uses including encroachments of any kind;
2. Setting up of any new industry and expansion of existing industries;
3. Manufacture or/and handling or/and storage or/and disposal of construction and demolition waste covered under the Construction and Demolition Waste Management Rules, 2016; hazardous substances covered under the Manufacture, Storage and Import of Hazardous Chemical Rules, 1989 or the Rules for Manufacture, Use, Import, Export and Storage of Hazardous Microorganism Genetically Engineered organized or cells, 1989 or the Hazardous Waste (Management, Handling and Transboundary Movement) Rules, 2008; electronic waste covered under the E-Waste (Management) Rules 2016; plastic waste covered under Plastic Waste (Management) Rules, 2016;
4. Solid waste storage and disposal;

5. Discharge of untreated waste and effluents from industries, cities, towns, villages and other human settlements;
6. Any construction of permanent nature except for boat jetties within fifty metres from the mean high flood level observed in the past ten years calculated from the date of commencement of these rules;
7. Commercial mining, stone quarrying and crushing units
8. Commercial water extraction Establishment of large scale commercial livestock and poultry farms;
9. Reducing area/ capacity of the water body;
10. Feeding of fishes and migratory birds by the public;
11. Any type of poaching.

Prohibited Activities in Catchment Area/Zone of Influence:-

1. Discharge of untreated Solid/liquid waste and effluents;
2. Manufacture or/and handling or/and storage or/and disposal of construction and demolition waste covered under the Construction and Demolition Waste Management Rules, 2016; hazardous substances covered under the Manufacture, Storage and Import of Hazardous Chemical Rules, 1989 or the Rules for Manufacture, Use, Import, Export and Storage of Hazardous Microorganism Genetically Engineered organized or cells, 1989 or the Hazardous Waste (Management, Handling and Transboundary Movement) Rules, 2008; electronic waste covered under the E-Waste (Management) Rules 2016; plastic waste covered under Plastic Waste (Management) Rules, 2016;
3. Extraction of commercial water including groundwater.
4. Any type of poaching;

Schedule-III

Regulated Activities in Kanwas Pakshi Vihar Wetland:-

1. Fisheries;
2. Plying of boats;
3. Desilting;
4. Construction of temporary structures;
5. Water extraction for certain purposes.

Regulated Activities in Catchment Area/Zone of Influence:-

1. Conversion of land for any type of construction;
2. Setting up of any new industries and expansion of existing industries;
3. Mining.

[F.No.6 (3) Env/2023]
By order of the Governor,

Shikhar Agrawal,
Additional Chief Secretary to the Government.

Government Central Press, Jaipur.