 सत्यमेव जयते	राजस्थान राजपत्र विशेषांक	RAJASTHAN GAZETTE Extraordinary
	साधिकार प्रकाशित	Published by Authority
	वैशाख 04, सोमवार, शाके 1945-अप्रैल 24, 2023 <i>Vaisakha 04, Monday, Saka 1945- April 24, 2023</i>	

भाग 4 (ग)

उप-खण्ड(II)

राज्य सरकार तथा अन्य राज्य प्राधिकारियों द्वारा जारी किये गये कानूनी आदेश तथा अधिसूचनाएं।

Department of Environment and Climate Change

Notification

Jaipur, March 21, 2023

S.O.51 .- The following draft of the notification, which the State Government proposes to issue in exercise of the powers conferred by rule 7 of the Wetland (Conservation and Management) Rules, 2017 read with Environment (Protection) Act, 1986 (Central Act No. 29 of 1986), is hereby published for the information of the persons likely to be concerned or affected thereby and notice is hereby given to them that the said draft notification shall be taken into consideration after the expiry of a period of sixty days from the date on which copies of this notification as published in the Official Gazette are made available to the public.

Any person interested in making any objection or suggestion on the proposals contained in the draft notification may forward the same in writing for consideration to the State Government within the period of 60 days as specified above to the Director cum Joint Secretary, Department of Environment and Climate Change Room No. 8240 SSO Building, Government Secretariat, Jaipur, Rajasthan or at env_raj@yahoo.co.in.

Draft Notification

WHEREAS, the Lhasi wetland, situated in Khajuriya and Lambakheda village of Chipabadod Tehsil in Baran district of Rajasthan, is considered to be critically significant for its ecosystem services and biodiversity values for the local communities and society at large;

AND WHEREAS, it is considered that for sustaining the said values, the ecological character of wetland ecosystem needs to be maintained by regulating developmental activities within the wetland as well as within its zone of influence;

NOW THEREFORE, the State Government declares that the Lhasi wetland shall be covered under the provisions of the Wetlands (Conservation and Management) Rules, 2017 and notifies that,-

- (i) the extent of the wetland /wetland complex and its zone of influence shall be as described in Schedule-I of this notification;
- (ii) the activities prohibited within the wetland and its zone of influence shall be as listed in Schedule-II of this notification;
- (iii) the activities regulated within the wetland and its zone of influence, i.e. permitted only with permission of the State Government shall be as listed in Schedule-III of this notification. Request for permission for regulated activities may be made to the District Environment Committee headed by the District Collector; and

- (iv) the State Wetland Authority, Rajasthan shall monitor the enforcement of the provisions of this notification.

Schedule-I

Lhasi Wetland Complex comprising of total area of 664.37 Hectare within the following boundary delineation:-

The geo-coordinates of Lhasi Wetland of Baran, Rajasthan

S.no	Latitude	Longitude	S.no	Latitude	Longitude	S.no	Latitude	Longitude
1	24.57680920050	76.72407958690	42	24.56460689490	76.71786689780	83	24.55635319590	76.71980938740
2	24.57733122360	76.72335705700	43	24.56411546930	76.71865749420	84	24.55545851980	76.71992232450
3	24.57758526200	76.72241623980	44	24.56397249380	76.71959086410	85	24.55456398480	76.71987784530
4	24.57773292400	76.72145821670	45	24.56370289410	76.72028113270	86	24.55374007750	76.72022494320
5	24.57770019610	76.72059789280	46	24.56287759210	76.72050686450	87	24.55285430900	76.72032007380
6	24.57728641380	76.71975694270	47	24.56282996950	76.72147408780	88	24.55233118670	76.72000313490
7	24.57676476550	76.71981220080	48	24.56277727270	76.72245430670	89	24.55286602090	76.71925978120
8	24.57633997030	76.72052940260	49	24.56285725710	76.72342993710	90	24.55335525200	76.71845130990
9	24.57544160880	76.72049980810	50	24.56310698190	76.72437857110	91	24.55414550290	76.71800019460
10	24.57488986960	76.72013155700	51	24.56335670040	76.72532720860	92	24.55503857940	76.71801105410
11	24.57564364750	76.71971732230	52	24.56350527060	76.72629786860	93	24.55592803100	76.71798526650
12	24.57595681620	76.71882625870	53	24.56354837380	76.72728091390	94	24.55676703830	76.71762666850
13	24.57529150500	76.71828959580	54	24.56282399830	76.72736099630	95	24.55759429340	76.71759705570
14	24.57451465900	76.71778658230	55	24.56234614330	76.72653846810	96	24.55826140560	76.71701293680
15	24.57374821750	76.71726510460	56	24.56200664070	76.72562731260	97	24.55910323010	76.71674455710
16	24.57298799250	76.71673259580	57	24.56134085350	76.72498481660	98	24.56000561670	76.71675038160
17	24.57216212910	76.71642298170	58	24.56114018920	76.72402299500	99	24.56078931610	76.71631350000
18	24.57134508810	76.71680229350	59	24.56074648720	76.72315351700	100	24.56086513340	76.71547392110
19	24.57107599600	76.71767579130	60	24.55994162930	76.72310215970	101	24.56006065350	76.71563322220
20	24.57077805700	76.71843778990	61	24.55918805370	76.72363834780	102	24.55927289480	76.71605139190
21	24.57017737140	76.71891181720	62	24.55838511650	76.72408099430	103	24.55837473690	76.71600344850
22	24.56941946800	76.71936558240	63	24.55781348870	76.72452878730	104	24.55747828080	76.71598432290
23	24.56875663140	76.72003134090	64	24.55769270910	76.72550155930	105	24.55665637700	76.71632041550
24	24.56810504200	76.72063716370	65	24.55733888230	76.72633616540	106	24.55594379040	76.71673765560
25	24.56723244800	76.72049286620	66	24.55653542500	76.72665337520	107	24.55509035520	76.71667090910
26	24.56645602520	76.72010443990	67	24.55591831990	76.72726717020	108	24.55440806510	76.71718412900
27	24.56690397240	76.71941605510	68	24.55528507320	76.72726209430	109	24.55386423720	76.71767231560
28	24.56765864950	76.71909067890	69	24.55532061230	76.72628701580	110	24.55298668490	76.71747650920
29	24.56836777730	76.71851518550	70	24.55566773060	76.72538892940	111	24.55209834100	76.71733078890
30	24.56921549930	76.71818731510	71	24.55574414670	76.72441089700	112	24.55136950030	76.71677234250
31	24.56973412800	76.71742612710	72	24.55615582920	76.72357945290	113	24.55090564080	76.71598211880
32	24.56915072280	76.71705431190	73	24.55663752910	76.72277241310	114	24.55125761950	76.71526319330
33	24.56843092320	76.71677393300	74	24.55699028500	76.72195261310	115	24.55135586380	76.71468863720
34	24.56817563030	76.71587596390	75	24.55786630180	76.72215307490	116	24.55051026890	76.71468480580
35	24.56733233190	76.71592740270	76	24.55828839590	76.72166724850	117	24.54962776130	76.71454484160
36	24.56737891300	76.71689563340	77	24.55904008960	76.72122243350	118	24.54873168630	76.71462794850

37	24.56670289830	76.71743341260	78	24.55985494140	76.72081461540	119	24.54792505850	76.71507117570
38	24.56590316130	76.71777122430	79	24.55962728780	76.72035379630	120	24.54705013060	76.71525443200
39	24.56557960820	76.71691601040	80	24.55879515060	76.72065784780	121	24.54659010820	76.71600167080
40	24.56528447400	76.71620441010	81	24.55790568780	76.72057355310	122	24.54611736250	76.71539023330
41	24.56508235190	76.71706460590	82	24.55723086570	76.71993681690	123	24.54574851050	76.71475298790
124	24.54485474000	76.71487244590	172	24.54703220580	76.71273793710	220	24.55754981680	76.70674849730
125	24.54437044160	76.71561972290	173	24.54740005860	76.71356409700	221	24.55752429010	76.70627444780
126	24.54424441980	76.71639641230	174	24.54825955380	76.71374563420	222	24.55832547170	76.70659013330
127	24.54435772950	76.71736780550	175	24.54899092250	76.71323109440	223	24.55908512820	76.70709346000
128	24.54408363090	76.71809724520	176	24.54986964620	76.71340557930	224	24.55975953490	76.70774964350
129	24.54414832440	76.71711933900	177	24.55076973480	76.71335198900	225	24.56036542030	76.70774703680
130	24.54390375990	76.71619252050	178	24.55161115280	76.71362382630	226	24.56069007670	76.70714304560
131	24.54320395610	76.71628230700	179	24.55236452070	76.71408347840	227	24.56090416190	76.70800249800
132	24.54289540620	76.71710376630	180	24.55286613680	76.71488570210	228	24.56087935380	76.70897500590
133	24.54217851050	76.71769676970	181	24.55310445850	76.71579762330	229	24.56165790770	76.70868471990
134	24.54167599080	76.71851596890	182	24.55396201510	76.71551827970	230	24.56178018920	76.70935713980
135	24.54144549680	76.71850674370	183	24.55478491310	76.71511222340	231	24.56135210880	76.71020629870
136	24.54194728690	76.71768702940	184	24.55538724640	76.71453991410	232	24.56204429570	76.71001615480
137	24.54262439640	76.71705236600	185	24.55473637880	76.71398615770	233	24.56272031810	76.71014336690
138	24.54300256480	76.71628381260	186	24.55458962900	76.71335401910	234	24.56297439530	76.71098890610
139	24.54357944690	76.71568210080	187	24.55538389410	76.71303075220	235	24.56377143770	76.71115885030
140	24.54356282980	76.71524885520	188	24.55613319870	76.71344474320	236	24.56408720690	76.71152164530
141	24.54277474470	76.71543995540	189	24.55647769720	76.71264799730	237	24.56459355590	76.71080172110
142	24.54193559720	76.71580169860	190	24.55636481740	76.71175819480	238	24.56488479170	76.70996980630
143	24.54129364880	76.71589780580	191	24.55720332550	76.71181632540	239	24.56534695000	76.70919263160
144	24.54211524160	76.71549033270	192	24.55762387800	76.71149340130	240	24.56575145650	76.70842072570
145	24.54287140490	76.71502161770	193	24.55699878010	76.71097654970	241	24.56509319290	76.70781112160
146	24.54371450050	76.71484262180	194	24.55609840270	76.71094787230	242	24.56420381130	76.70771682180
147	24.54448583820	76.71462940180	195	24.55520305820	76.71105660650	243	24.56348114120	76.70720263710
148	24.54534152540	76.71437209890	196	24.55529075640	76.71055476720	244	24.56300988810	76.70668966590
149	24.54609648970	76.71403698580	197	24.55480178340	76.71009450630	245	24.56233233320	76.70619357290
150	24.54614917720	76.71308982980	198	24.55420077520	76.70953114040	246	24.56163384670	76.70564345510
151	24.54563478790	76.71233848780	199	24.55341145650	76.70932280740	247	24.56079188550	76.70551217450
152	24.54476676800	76.71209877370	200	24.55260257580	76.70895048160	248	24.56140303650	76.70525231900
153	24.54391161710	76.71188519910	201	24.55180891870	76.70858306380	249	24.56223766850	76.70550235850
154	24.54321542480	76.71204974560	202	24.55099007180	76.70832080880	250	24.56311371680	76.70573676030
155	24.54311514070	76.71115548370	203	24.55080824520	76.70738814800	251	24.56390112040	76.70619041110
156	24.54385415960	76.71070378320	204	24.55148298900	76.70720291810	252	24.56467157490	76.70665875920
157	24.54471707260	76.71087777170	205	24.55210957620	76.70782496260	253	24.56556039820	76.70657729130
158	24.54540655990	76.71075322130	206	24.55290425750	76.70793913380	254	24.56571596240	76.70599520900
159	24.54532784570	76.70978845540	207	24.55375362980	76.70782547280	255	24.56643874070	76.70577769320
160	24.54537154710	76.70893826370	208	24.55443753970	76.70845177670	256	24.56694402940	76.70536176270
161	24.54517979590	76.70799388820	209	24.55529901800	76.70866058040	257	24.56624112780	76.70484716910

162	24.54498475590	76.70704009150	210	24.55587858620	76.70941286410	258	24.56541586760	76.70454817910
163	24.54458536130	76.70616804520	211	24.55668268310	76.707971581450	259	24.56492809720	76.70385312860
164	24.54478068070	76.70610118100	212	24.55725482950	76.70901411450	260	24.56543536520	76.70360266790
165	24.54517958960	76.70696989100	213	24.55807711660	76.70902607050	261	24.56593238360	76.70433267860
166	24.54541333020	76.70791208030	214	24.55856556950	76.70984072360	262	24.56673412550	76.70415590260
167	24.54571316000	76.70879193500	215	24.55917778400	76.71052538820	263	24.56709618170	76.70327448220
168	24.54587627600	76.70970695910	216	24.55924714610	76.70986950930	264	24.56784010940	76.70357542030
169	24.54578467680	76.71052678400	217	24.55908619820	76.70908533270	265	24.56802008890	76.70450634520
170	24.54608083580	76.71125357310	218	24.55861619040	76.70824696500	266	24.56860308400	76.70511041710
171	24.54680340560	76.71180050070	219	24.55822200450	76.70738151640	267	24.56916862740	76.70585848630
268	24.56997068380	76.70623837380	316	24.57595338780	76.68943259600	364	24.58145145400	76.71812142960
269	24.57036234360	76.70542041190	317	24.57676085220	76.68980354050	365	24.58102557580	76.71813313970
270	24.57098431760	76.70481948140	318	24.57744896610	76.69025666000	366	24.58091194800	76.71910722120
271	24.57123272690	76.70392792230	319	24.57821982550	76.69065487310	367	24.58108106230	76.72006018540
272	24.57128458900	76.70294232990	320	24.57877879010	76.69138784880	368	24.58165640220	76.72075740160
273	24.57135666530	76.70196069330	321	24.57928004540	76.69220899130	369	24.58221932910	76.72127904940
274	24.57197344820	76.70131022180	322	24.57974407180	76.69305522080	370	24.58183439250	76.72188393570
275	24.57279860730	76.70098720490	323	24.58018937570	76.69391406760	371	24.58095714170	76.72173584030
276	24.57354250180	76.70056159530	324	24.58063467440	76.69477292030	372	24.58046047740	76.72093982420
277	24.57421250770	76.70012676220	325	24.58107996780	76.69563177880	373	24.58018517720	76.72116238810
278	24.57462449740	76.69942696950	326	24.58152525590	76.69649064320	374	24.58033218200	76.72213452060
279	24.57384694240	76.69944414750	327	24.58197053880	76.69734951350	375	24.57966851670	76.72207968310
280	24.57294432530	76.69945657370	328	24.58241578260	76.69820832440	376	24.57941008920	76.72301506580
281	24.57204990800	76.69956944170	329	24.58286105490	76.69906720640	377	24.57935904880	76.72399868290
282	24.57116883130	76.69968856650	330	24.58330630050	76.69992609920	378	24.57998040730	76.72461536060
283	24.57126811720	76.69880393300	331	24.58375157290	76.70078496730	379	24.58048007280	76.72537659100
284	24.57203744610	76.69850837450	332	24.58419682930	76.70164386700	380	24.58088939000	76.72622976450
285	24.57264350060	76.69794888470	333	24.58457126720	76.70254000950	381	24.58095464260	76.72699411420
286	24.57310637950	76.69718114590	334	24.58480016720	76.70349401530	382	24.58018885520	76.72660245440
287	24.57387381120	76.69671051460	335	24.58493014300	76.70447087030	383	24.57979711220	76.72572182010
288	24.57466006680	76.69647218530	336	24.58506558380	76.70544702650	384	24.57921057930	76.72528280060
289	24.57472267300	76.69618148430	337	24.58520101810	76.70642318440	385	24.57915690780	76.72622980330
290	24.57391651230	76.69593003020	338	24.58533644600	76.70739934400	386	24.57853970480	76.72624853780
291	24.57317509130	76.69537905080	339	24.58544119980	76.70837933150	387	24.57796480170	76.72632474020
292	24.57227898370	76.69543736780	340	24.58549396750	76.70935908760	388	24.57720597480	76.72656764620
293	24.57171047470	76.69482965930	341	24.58496457260	76.71012108900	389	24.57717953340	76.72572598630
294	24.57088728810	76.69502961580	342	24.58423847970	76.71070785280	390	24.57747390920	76.72484744550
295	24.57015898750	76.69555321130	343	24.58349982470	76.71127527600			
296	24.56956107130	76.69503097660	344	24.58326567180	76.71205387110			
297	24.56979690030	76.69419670710	345	24.58404331100	76.71252022360			
298	24.57066074820	76.69399215040	346	24.58454454170	76.71333029470			
299	24.57118926730	76.69327628580	347	24.58497315930	76.71419726300			
300	24.57159876040	76.69275072790	348	24.58504058880	76.71512315140			

301	24.57233772010	76.69321812570	349	24.58417562060	76.71536202080
302	24.57263572550	76.69263972680	350	24.58331725340	76.71564332040
303	24.57213434860	76.69182978160	351	24.58268865120	76.71632883540
304	24.57210187680	76.69088449990	352	24.58251279320	76.71728351400
305	24.57194579120	76.69000525830	353	24.58290737850	76.71814847460
306	24.57227357260	76.68943727270	354	24.58342670920	76.71895608510
307	24.57312065900	76.68972688660	355	24.58394603510	76.71976370210
308	24.57358702400	76.69052928400	356	24.58445696090	76.72057739830
309	24.57332697280	76.69139907960	357	24.58493334930	76.72141607910
310	24.57377572180	76.69223302480	358	24.58501515020	76.72213765910
311	24.57462512980	76.69246856280	359	24.58421021460	76.72169848660
312	24.57547307920	76.69235825430	360	24.58363813450	76.72094827130
313	24.57618220460	76.69206814510	361	24.58304636310	76.72020263330
314	24.57599487660	76.69111559200	362	24.58224830320	76.71979323800
315	24.57562330990	76.69021965770	363	24.58173155910	76.71905772500

Details of Catchment Area/Zone of Influence of Lhasi Wetland falling within the boundary limit of Baran, Rajasthan:- Total Area Of = 344.48
The geo-coordinates of Lhasi Wetland and its Zone of influence Lhasi Dam

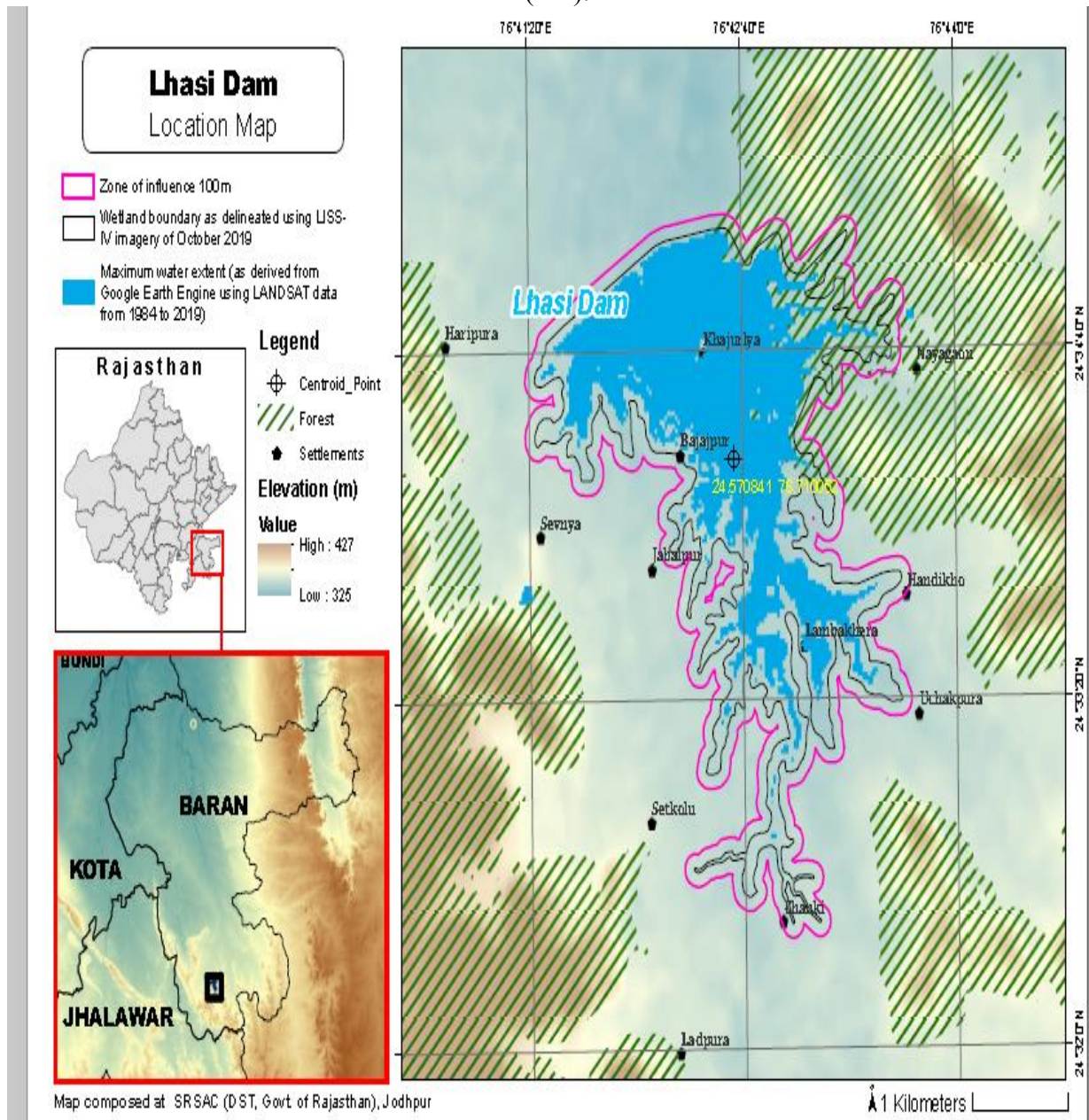
S.no	Latitude	Longitude	S.no	Latitude	Longitude	S.no	Latitude	Longitude
1	24.58502961450	76.71129616970	42	24.57650713410	76.72151133320	83	24.55881111270	76.72495673220
2	24.58477717530	76.71193191610	43	24.57560790160	76.72148136040	84	24.55854770750	76.72585398860
3	24.58528881970	76.71273794590	44	24.57471113630	76.72144392270	85	24.55827084190	76.72678103360
4	24.58570986480	76.71360943070	45	24.57403194280	76.72083730240	86	24.55752680610	76.72730574680
5	24.58601318030	76.71452793300	46	24.57400275430	76.71988698920	87	24.55687930100	76.72786512800
6	24.58590305650	76.71549359170	47	24.57452160890	76.71910034880	88	24.55609855420	76.72833266770
7	24.58523358250	76.71612315970	48	24.57398278130	76.71858952430	89	24.55523839680	76.72851902230
8	24.58435631540	76.71632938430	49	24.57321758600	76.71806582990	90	24.55453420500	76.72795109590
9	24.58354360750	76.71669391050	50	24.57245736390	76.71753331890	91	24.55440033690	76.72699221840
10	24.58363991500	76.71757126880	51	24.57201237300	76.71790627590	92	24.55445204000	76.72601766580
11	24.58415924860	76.71837888200	52	24.57180546170	76.71884773000	93	24.55479255650	76.72511635370
12	24.58467857750	76.71918650180	53	24.57107668830	76.71938096360	94	24.55487487620	76.72413902900
13	24.58519123200	76.71999897450	54	24.57039650750	76.71997819210	95	24.55518586240	76.72321652600
14	24.58566762340	76.72083765840	55	24.56965062770	76.72048242490	96	24.55577027000	76.72249447820
15	24.58610277040	76.72169873530	56	24.56905468740	76.72121515390	97	24.55601786170	76.72155081140
16	24.58595386890	76.72264171220	57	24.56825321860	76.72161847900	98	24.55673598000	76.72100196250
17	24.58519055610	76.72311797290	58	24.56737436820	76.72147777780	99	24.55625946890	76.72081760320
18	24.58433252520	76.72288334770	59	24.56648525560	76.72135270530	100	24.55536494500	76.72093097210
19	24.58354340660	76.72240650300	60	24.56576764960	76.72077122220	101	24.55448723190	76.72094921260
20	24.58307722490	76.72198854260	61	24.56552698930	76.71984573090	102	24.55363777820	76.72120658570
21	24.58257360110	76.72277111730	62	24.56587086560	76.71895285980	103	24.55275272290	76.72135574100
22	24.58169392800	76.72287429260	63	24.56534473630	76.71855344080	104	24.55188291670	76.72127130550
23	24.58089071410	76.72297855200	64	24.56484880110	76.71926390630	105	24.55144562210	76.72044606990
24	24.58026982860	76.72350167370	65	24.56492887320	76.72023367740	106	24.55152060570	76.71947270160

25	24.58087894010	76.72415172540	66	24.56448648810	76.72106388050	107	24.55204688890	76.71868664610
26	24.58133247790	76.72497523690	67	24.56373201490	76.72139074990	108	24.55188676870	76.71829518980
27	24.58175026790	76.72581527990	68	24.56371071050	76.72237567400	109	24.55109049560	76.71784340160
28	24.58205476050	76.72671875110	69	24.56377410240	76.72334396310	110	24.55040915490	76.71720048310
29	24.58174420900	76.72763295360	70	24.56402382740	76.72429260400	111	24.55005153350	76.71630627200
30	24.58093311920	76.72798495590	71	24.56427275600	76.72524149050	112	24.54976200830	76.71552368250
31	24.58007800770	76.72776948710	72	24.56440538960	76.72621599520	113	24.54887708800	76.71565724850
32	24.57935972440	76.72738911250	73	24.56446585080	76.72720015830	114	24.54806713910	76.71609314780
33	24.57847580260	76.72749043060	74	24.56414391830	76.72809935890	115	24.54737596580	76.71650902130
34	24.57762266940	76.72761980960	75	24.56335369290	76.72853173720	116	24.54665333000	76.71704153190
35	24.57675297840	76.72742454040	76	24.56248235790	76.72833837000	117	24.54580837160	76.71678415890
36	24.57619430460	76.72668009590	77	24.56185154690	76.72764262470	118	24.54530322130	76.71597128340
37	24.57625388570	76.72571576230	78	24.56146363750	76.72675809910	119	24.54522218520	76.71671023100
38	24.57603397670	76.72482495430	79	24.56096064430	76.72599552450	120	24.54523932820	76.71769453320
39	24.57591942210	76.72386844650	80	24.56045840090	76.72520087310	121	24.54501847380	76.71864231410
40	24.57630335350	76.72301082430	81	24.56025883200	76.72423871410	122	24.54427532390	76.71914210390
41	24.57668541920	76.72218074890	82	24.55961333300	76.72451215680	123	24.54345568620	76.71881554910
124	24.54302671210	76.71821669130	172	24.55370022780	76.71283931850	220	24.57034750370	76.70356497550
125	24.54247806560	76.71898626550	173	24.55446375210	76.71236480700	221	24.57039936300	76.70257938980
126	24.54190565480	76.71973396470	174	24.55453765900	76.71199504090	222	24.57051049650	76.70160395880
127	24.54103535480	76.71980383550	175	24.55407533370	76.71118329880	223	24.57100227590	76.70079426170
128	24.54044534470	76.71910097990	176	24.55368576860	76.71036896250	224	24.57043332790	76.70029618820
129	24.54058016920	76.71815733800	177	24.55282944650	76.71013962730	225	24.57016038960	76.69939129450
130	24.54107920780	76.71733563990	178	24.55202898620	76.70971316190	226	24.57041448690	76.69845434610
131	24.54067692540	76.71680226570	179	24.55118372580	76.70950535800	227	24.57097828540	76.69771273760
132	24.54034796050	76.71591858220	180	24.55039916900	76.70908647410	228	24.57180295480	76.69747421140
133	24.54077738170	76.71508818950	181	24.54996603270	76.70824288380	229	24.57223417340	76.69662454270
134	24.54158845370	76.71465713480	182	24.54991279670	76.70726156340	230	24.57185771880	76.69637653590
135	24.54236834280	76.71418804160	183	24.55029099470	76.70638899930	231	24.57111218210	76.69618193240
136	24.54320249200	76.71383907810	184	24.55110430240	76.70606665770	232	24.57028108560	76.69653087620
137	24.54406607860	76.71374738850	185	24.55197491020	76.70632588790	233	24.56940036310	76.69639269290
138	24.54491152590	76.71343313860	186	24.55267704370	76.70691992440	234	24.56877460900	76.69570976300
139	24.54485914890	76.71318514100	187	24.55354669730	76.70676806870	235	24.56865843760	76.69474091970
140	24.54402554280	76.71288902280	188	24.55438635990	76.70708748440	236	24.56883222770	76.69378341040
141	24.54320871020	76.71322408580	189	24.55513204410	76.70755718160	237	24.56954948200	76.69323674150
142	24.54250237890	76.71267525140	190	24.55593933430	76.70796353180	238	24.57023691490	76.69291553140
143	24.54211485600	76.71179057490	191	24.55651770950	76.70832603460	239	24.57057806670	76.69203160020
144	24.54224719300	76.71083649890	192	24.55735049710	76.70801913600	240	24.57111843740	76.69145858120
145	24.54278637680	76.71005808010	193	24.55688050420	76.70744255690	241	24.57116040660	76.69051287870
146	24.54363144820	76.70973860540	194	24.55636452010	76.70667485860	242	24.57089765160	76.68959673470
147	24.54443222120	76.70960028220	195	24.55653553210	76.70572725840	243	24.57134291610	76.68877247690
148	24.54430833910	76.70866590070	196	24.55728106810	76.70520310410	244	24.57218068470	76.68845190770
149	24.54417440180	76.70769765440	197	24.55810703720	76.70548505330	245	24.57306241500	76.68860464840
150	24.54381361370	76.70681013790	198	24.55894348250	76.70580852600	246	24.57384537340	76.68908690290
151	24.54369939980	76.70584511020	199	24.55968433350	76.70635508490	247	24.57436799480	76.68988221470

152	24.54413553170	76.70499674580	200	24.55987417850	76.70577872420	248	24.57450292570	76.69085133940
153	24.54498130840	76.70476206890	201	24.56003312270	76.70483848330	249	24.57469205370	76.69136498040
154	24.54567448260	76.70534147510	202	24.56071149830	76.70424140380	250	24.57483884890	76.69077645530
155	24.54583636820	76.70627309030	203	24.56158385640	76.70428270590	251	24.57470042910	76.68981041600
156	24.54616316120	76.70717460370	204	24.56244225330	76.70453922050	252	24.57504295190	76.68891263570
157	24.54637180380	76.70811660680	205	24.56331824430	76.70477408720	253	24.57581495810	76.68844946330
158	24.54674224200	76.70898588580	206	24.56414594930	76.70515044230	254	24.57670027010	76.68859985900
159	24.54676871050	76.70996599720	207	24.56481245440	76.70557845560	255	24.57743757410	76.68914931190
160	24.54705151180	76.71068331190	208	24.56435418060	76.70491849410	256	24.57819728440	76.68963947840
161	24.54764377820	76.71141356190	209	24.56401161870	76.70402362560	257	24.57900463710	76.69001580050
162	24.54791791380	76.71234644920	210	24.56418255910	76.70306343990	258	24.57952047970	76.69082461530
163	24.54833955130	76.71243168940	211	24.56487282460	76.70245386620	259	24.58002173790	76.69164576080
164	24.54920829860	76.71226451300	212	24.56574528380	76.70253120330	260	24.58048884810	76.69248996340
165	24.55008812440	76.71240353410	213	24.56630946940	76.70278954540	261	24.58093415280	76.69334881510
166	24.55098862170	76.71238031780	214	24.56701248780	76.70223225020	262	24.58137945220	76.69420767260
167	24.55185863930	76.71260694800	215	24.56789238270	76.70235732290	263	24.58182474630	76.69506653600
168	24.55262985620	76.71309715240	216	24.56857340220	76.70299385750	264	24.58227003520	76.69592540530
169	24.55330001030	76.71374429930	217	24.56893585340	76.70388936380	265	24.58271531880	76.69678428040
170	24.55375689840	76.71453653630	218	24.56942281500	76.70468694070	266	24.58316059930	76.69764316010
171	24.55345699900	76.71376714990	219	24.56992280530	76.70429639700	267	24.58360587620	76.69850204460
268	24.58405114810	76.69936093480	276	24.58616728140	76.70680595840	284	24.56341863730	76.70945780910
269	24.58449641680	76.70021982960	277	24.58630262540	76.70778213860	285	24.56395972000	76.71004681600
270	24.58494168010	76.70107873040	278	24.58637385650	76.70876635170	286	24.56416448550	76.70909795570
271	24.58533906960	76.70196363410	279	24.58634021210	76.70974149080	287	24.56390341750	76.70864984510
272	24.58560929640	76.70290494840	280	24.58588284790	76.71058396930	288	24.56315891900	76.70814896810
273	24.58576154860	76.70387738230	281	24.56184874410	76.70740486990	289	24.56234085470	76.70778266380
274	24.58589641220	76.70485362870	282	24.56244234790	76.70793393450	290	24.56183078930	76.70707363770
275	24.58603185000	76.70582979270	283	24.56288853550	76.70875240240			

The detailed Map of Lhasi Wetland and its Zone of Influence is annexed herewith as Schedule-I ('A').

The detailed Map of Lhasi Wetland and its Zone of Influence is annexed herewith as Schedule-I ('A').



Schedule-II

Prohibited Activities in Lhasi Wetland :-

1. Conversion for non wetland uses including encroachments of any kind;
2. Setting up of any new industry and expansion of existing industries;
3. Manufacture or/and handling or/and storage or/and disposal of construction and demolition waste covered under the Construction and Demolition Waste Management Rules, 2016; hazardous substances covered under the Manufacture, Storage and Import of Hazardous Chemical Rules, 1989 or the Rules for Manufacture, Use, Import, Export and Storage of Hazardous Microorganism Genetically Engineered organized or cells, 1989 or the Hazardous Waste (Management, Handling and Transboundary Movement) Rules, 2008; electronic waste covered under the E-Waste (Management) Rules 2016; plastic waste covered under Plastic Waste (Management) Rules, 2016;

4. Solid waste storage and disposal;
5. Discharge of untreated waste and effluents from industries, cities, towns, villages and other human settlements;
6. Any construction of permanent nature except for boat jetties within fifty metres from the mean high flood level observed in the past ten years calculated from the date of commencement of these rules;
7. Commercial mining, stone quarrying and crushing units
8. Commercial water extraction Establishment of large scale commercial livestock and poultry farms;
9. Reducing area/ capacity of the water body;
10. Feeding of fishes and migratory birds by the public;
11. Any type of poaching.

Prohibited Activities in Catchment Area/Zone of Influence :-

1. Discharge of untreated Solid/liquid waste and effluents;
2. Manufacture or/and handling or/and storage or/and disposal of construction and demolition waste covered under the Construction and Demolition Waste Management Rules, 2016; hazardous substances covered under the Manufacture, Storage and Import of Hazardous Chemical Rules, 1989 or the Rules for Manufacture, Use, Import, Export and Storage of Hazardous Microorganism Genetically Engineered organized or cells, 1989 or the Hazardous Waste (Management, Handling and Transboundary Movement) Rules, 2008; electronic waste covered under the E-Waste (Management) Rules 2016; plastic waste covered under Plastic Waste (Management) Rules, 2016;
3. Extraction of commercial water including groundwater.
4. Any type of poaching;

Schedule–III

Regulated Activities in Lhasi Wetland :-

1. Fisheries;
2. Plying of boats;
3. Desilting;
4. Construction of temporary structures;
5. Water extraction for certain purposes.

Regulated Activities in Catchment Area/Zone of Influence :-

1. Conversion of land for any type of construction;
2. Setting up of any new industries and expansion of existing industries;
3. Mining.

[F.No.6 (3) Env/2023]
By order of the Governor,

Shikhar Agrawal,
Additional Chief Secretary to the Government.