 सत्यमेव जयते	<b>राजस्थान राजपत्र</b> <b>विशेषांक</b>	<b>RAJASTHAN GAZETTE</b> <b>Extraordinary</b>
	<b>साधिकार प्रकाशित</b>	<b>Published by Authority</b>
	चैत्र 29, बुधवार, शाके 1945-अप्रैल 19, 2023 <i>Chaitra 29, Wednesday, Saka 1945- April 19, 2023</i>	

भाग 4 (ग)

उप-खण्ड(II)

राज्य सरकार तथा अन्य राज्य प्राधिकारियों द्वारा जारी किये गये कानूनी आदेश तथा अधिसूचनाएं।

**Department of Environment and Climate Change**

Notification

**Jaipur, March 21, 2023**

**S.O.11** .-The following draft of the notification, which the State Government proposes to issue in exercise of the powers conferred by rule 7 of the Wetland (Conservation and Management) Rules, 2017 read with Environment (Protection) Act, 1986 (Central Act No. 29 of 1986), is hereby published for the information of the persons likely to be concerned or affected thereby and notice is hereby given to them that the said draft notification shall be taken into consideration after the expiry of a period of sixty days from the date on which copies of this notification as published in the Official Gazette are made available to the public.

Any person interested in making any objection or suggestion on the proposals contained in the draft notification may forward the same in writing for consideration to the State Government within the period of 60 days as specified above to the Director cum Joint Secretary, Department of Environment and Climate Change Room No. 8240 SSO Building, Government Secretariat, Jaipur, Rajasthan or at env\_raj@yahoo.co.in.

**Draft Notification**

WHEREAS, the Tordi Sagar wetland, situated in Tordi village of Malpura Tehsil in Tonk district of Rajasthan, is considered to be critically significant for its ecosystem services and biodiversity values for the local communities and society at large;

AND WHEREAS, it is considered that for sustaining the said values, the ecological character of wetland ecosystem needs to be maintained by regulating developmental activities within the wetland as well as within its zone of influence;

NOW THEREFORE, the State Government declares that the Tordi Sagar wetland shall be covered under the provisions of the Wetlands (Conservation and Management) Rules, 2017 and notifies that,-

- (i) the extent of the wetland /wetland complex and its zone of influence shall be as described in Schedule-I of this notification;
- (ii) the activities prohibited within the wetland and its zone of influence shall be as listed in Schedule-II of this notification;
- (iii) the activities regulated within the wetland and its zone of influence, i.e. permitted only with permission of the State Government shall be as listed in Schedule-III of this notification. Request for permission for regulated activities may be made to the District Environment Committee headed by the District Collector; and

- (iv) the State Wetland Authority, Rajasthan shall monitor the enforcement of the provisions of this notification.

### Schedule-I

**Tordi Sagar Wetland Complex comprising of total area of 379.79 Hectare within the following boundary delineation:-**

**The geo-coordinates of Tordi Sagar Wetland of Tonk, Rajasthan**

### Tordi Sagar

S.no	Latitude	Longitude	S.no	Latitude	Longitude	S.no	Latitude	Longitude
1	26.20669935760	75.38919044260	42	26.21743028740	75.40117057840	83	26.20106789640	75.40505974950
2	26.20697828830	75.38976052540	43	26.21687216200	75.40195714550	84	26.20116329900	75.40406471190
3	26.20699093980	75.39072294610	44	26.21689185890	75.40287006300	85	26.20121871740	75.40306568390
4	26.20752602460	75.39145285920	45	26.21682029150	75.40386508360	86	26.20128488710	75.40206842140
5	26.20832204950	75.39189612200	46	26.21650567300	75.40478935100	87	26.20149312310	75.40109448520
6	26.20817332660	75.39275557210	47	26.21617879400	75.40571520980	88	26.20170135250	75.40012054540
7	26.20794348250	75.39371222080	48	26.21592188270	75.40667293610	89	26.20230379510	75.39949314290
8	26.20845320540	75.39446455880	49	26.21574980460	75.40765562950	90	26.20313361740	75.39910231520
9	26.20931821100	75.39429461480	50	26.21560689440	75.40863619710	91	26.20371476950	75.39842849820
10	26.20993192050	75.39356638050	51	26.21589335140	75.40958552460	92	26.20411394870	75.39753068390
11	26.21032441710	75.39266713560	52	26.21595065640	75.41054469010	93	26.20428586260	75.39657405710
12	26.21067558970	75.39174564440	53	26.21578472790	75.41151878950	94	26.20428651780	75.39557311520
13	26.21108698250	75.39087571130	54	26.21591275260	75.41250971570	95	26.20430935630	75.39457386160
14	26.21148922910	75.39006425620	55	26.21604077040	75.41350064410	96	26.20445737230	75.39358729320
15	26.21215015300	75.38945459380	56	26.21600176090	75.41448665560	97	26.20404754220	75.39276376900
16	26.21282758380	75.38884198920	57	26.21580543980	75.41545775540	98	26.20342405990	75.39204035660
17	26.21306464550	75.38969871540	58	26.21523851760	75.41623688620	99	26.20266460440	75.39154225470
18	26.21294055710	75.39068528070	59	26.21437835540	75.41651742530	100	26.20183387500	75.39115007160
19	26.21260255710	75.39161351700	60	26.21350660790	75.41677826360	101	26.20102091850	75.39071973770
20	26.21221522340	75.39251717110	61	26.21263486000	75.41703909850	102	26.20023379020	75.39023396730
21	26.21190495750	75.39345290620	62	26.21176311170	75.41729993000	103	26.19945790630	75.38975621710
22	26.21192444490	75.39441938880	63	26.21089136290	75.41756075770	104	26.19918925490	75.38884449150
23	26.21275420930	75.39477430150	64	26.21001961360	75.41782158170	105	26.19955540020	75.38806933830
24	26.21345110480	75.39538858770	65	26.20914786370	75.41808240180	106	26.19989747280	75.38875271620
25	26.21399177350	75.39613305520	66	26.20828659910	75.41818209300	107	26.20053634900	75.38941674200
26	26.21408985790	75.39712433080	67	26.20745764680	75.41778526320	108	26.20127726480	75.38998623840
27	26.21382146690	75.39807625310	68	26.20661594260	75.41742638270	109	26.20210465270	75.39038704800
28	26.21428604340	75.39877181960	69	26.20576599370	75.41709470650	110	26.20300278400	75.39037043690
29	26.21506491220	75.39927379330	70	26.20497441970	75.41661844500	111	26.20388263080	75.39018434830
30	26.21593641950	75.39915441500	71	26.20434582200	75.41595239700	112	26.20477488000	75.39021224050
31	26.21672570860	75.39867916240	72	26.20421426220	75.41496256200	113	26.20535385600	75.38983263740
32	26.21754502200	75.39825889720	73	26.20412831230	75.41396616770	114	26.20488832300	75.38904056190
33	26.21839747430	75.39794702580	74	26.20387936340	75.41302151630	115	26.20434681620	75.38827336830
34	26.21928084130	75.39803861470	75	26.20342584740	75.41215951440	116	26.20399593080	75.38736800950
35	26.21986424440	75.39875268550	76	26.20282720320	75.41142123420	117	26.20363221170	75.38646556290
36	26.22035881060	75.39957481750	77	26.20221466610	75.41070304080	118	26.20372698890	75.38565979060

37	26.22076237170	75.40043115040	78	26.20170862830	75.40987552390	119	26.20433019000	75.38630299520
38	26.22026699130	75.40105896510	79	26.20130095220	75.40901113230	120	26.20478358690	75.38716792300
39	26.21964123620	75.40042422510	80	26.20112408250	75.40802983790	121	26.20547891630	75.38775076940
40	26.21890009180	75.40010582020	81	26.20093049680	75.40705306670	122	26.20613824190	75.38834807910
41	26.21812192740	75.40052704150	82	26.20096147010	75.40605368590			

**Details of Catchment Area/Zone of Influence of Tordi Sagar Wetland falling within the boundary limit of Tonk, Rajasthan:-**

**Total Area Of = 124.21**

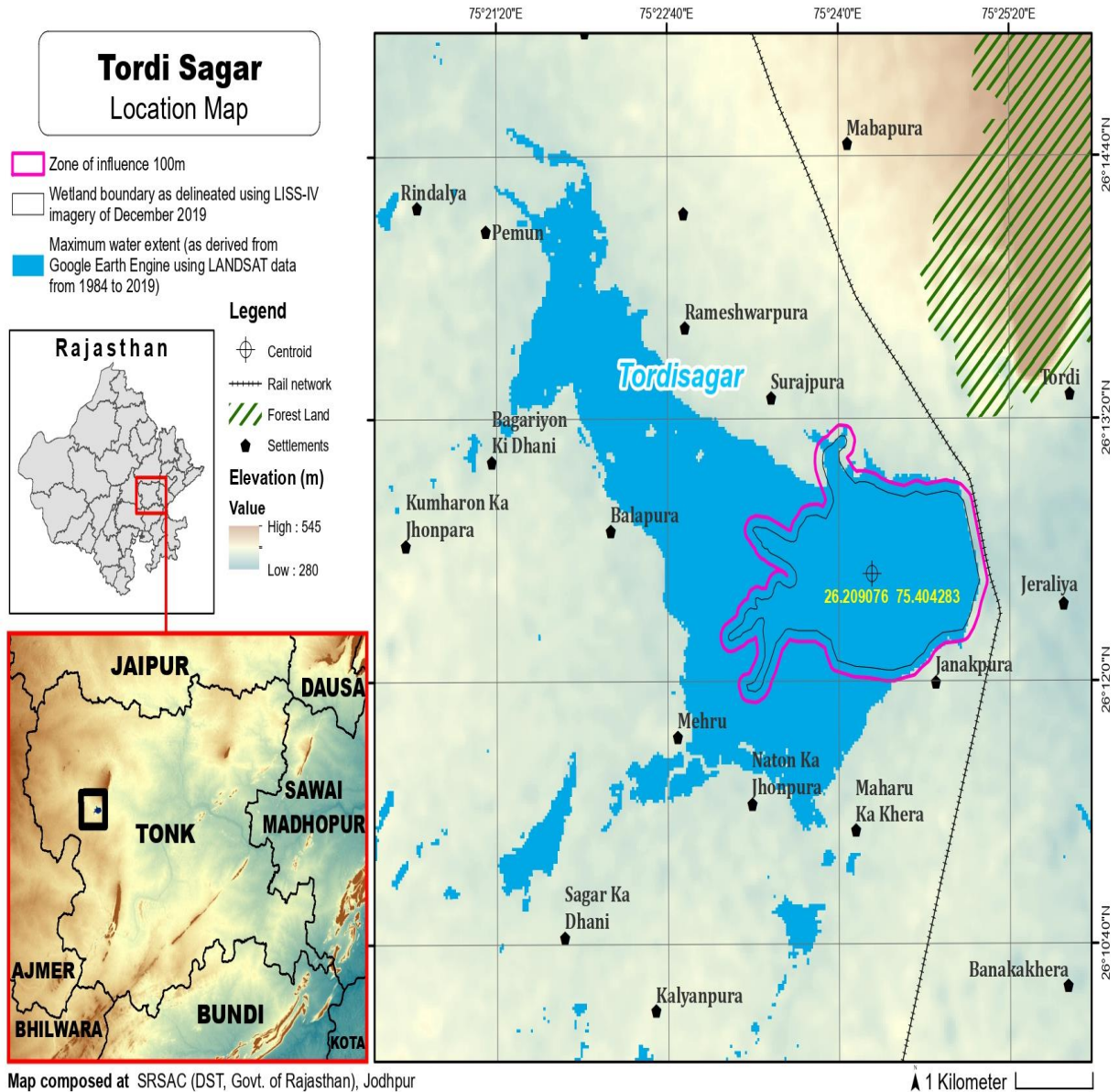
**The geo-coordinates of Tordi Sagar Wetland and its Zone of influence**

**Tordi Sagar**

S.no	Latitude	Longitude	S.no	Latitude	Longitude	S.no	Latitude	Longitude
1	26.21779619690	75.40274765290	43	26.20013354980	75.40529385190	85	26.20798580130	75.38913873040
2	26.21775476020	75.40374648390	44	26.20023997080	75.40429992180	86	26.20787025370	75.39010053740
3	26.21754614670	75.40471860990	45	26.20030099070	75.40330146050	87	26.20837680990	75.39073478740
4	26.21716326730	75.40561419320	46	26.20035640370	75.40230243950	88	26.20907744670	75.39134716870
5	26.21687302740	75.40656211800	47	26.20051691230	75.40132019940	89	26.20933287020	75.39228174490
6	26.21668959260	75.40754147670	48	26.20072514070	75.40034626750	90	26.20901401760	75.39318137790
7	26.21652505240	75.40852362620	49	26.20094911600	75.39937766120	91	26.20939247900	75.39251839420
8	26.21681151010	75.40947296100	50	26.20162287940	75.39875106620	92	26.20976059830	75.39160468580
9	26.21690379600	75.41044597850	51	26.20243723120	75.39832021050	93	26.21008313310	75.39067113550
10	26.21668439520	75.41141702480	52	26.20304259550	75.39767620030	94	26.21050280130	75.38980079080
11	26.21681175620	75.41240792060	53	26.20338279480	75.39676312800	95	26.21115661890	75.38912760030
12	26.21693977460	75.41339885650	54	26.20338345120	75.39576219380	96	26.21181335160	75.38846371130
13	26.21693958400	75.41438931980	55	26.20338410060	75.39476125960	97	26.21252446040	75.38786381700
14	26.21676430000	75.41537132430	56	26.20350647030	75.39377033650	98	26.21337813030	75.38804354900
15	26.21638367010	75.41625744150	57	26.20300891930	75.39301731110	99	26.21392753410	75.38879506890
16	26.21580532260	75.41702497020	58	26.20228869820	75.39245262060	100	26.21396601980	75.38978134750
17	26.21496975880	75.41737731640	59	26.20145782740	75.39206081090	101	26.21386720600	75.39077579910
18	26.21409801010	75.41763814990	60	26.20064286990	75.39163437230	102	26.21354163580	75.39170870420
19	26.21322626070	75.41789897930	61	26.19985500190	75.39115043830	103	26.21317434190	75.39262237280
20	26.21235451100	75.41815980560	62	26.19906327820	75.39069144850	104	26.21281489080	75.39353809040
21	26.21148276070	75.41842062820	63	26.19850964570	75.38992031530	105	26.21344842180	75.39402539310
22	26.21061100990	75.41868144700	64	26.19826080590	75.38898271250	106	26.21411015290	75.39470308040
23	26.20973925860	75.41894226190	65	26.19838555440	75.38799146930	107	26.21474117590	75.39540177470
24	26.20886750680	75.41920307310	66	26.19894067420	75.38725547150	108	26.21495561920	75.39637155230
25	26.20799458610	75.41913261780	67	26.19980443840	75.38699617020	109	26.21497412590	75.39736973630
26	26.20716563650	75.41873578230	68	26.20053136330	75.38751692060	110	26.21509107730	75.39816124870
27	26.20632485080	75.41837416980	69	26.20082143400	75.38843031750	111	26.21591267360	75.39805148980
28	26.20547154920	75.41805067390	70	26.20156443970	75.38899844050	112	26.21670782140	75.39758105930
29	26.20466467890	75.41760143350	71	26.20238269840	75.38939660220	113	26.21753566830	75.39718225210
30	26.20394055850	75.41700428580	72	26.20327268330	75.38928359650	114	26.21840490130	75.39693385600
31	26.20346645660	75.41619320730	73	26.20354046200	75.38878113820	115	26.21930310610	75.39697989860
32	26.20332805700	75.41520433440	74	26.20319623640	75.38787807780	116	26.22011496400	75.39740400170
33	26.20324210870	75.41420794750	75	26.20284035070	75.38696581110	117	26.22064108510	75.39821353680
34	26.20298092280	75.41326718780	76	26.20256880660	75.38601828370	118	26.22113020090	75.39904027470
35	26.20249025050	75.41242997420	77	26.20285885730	75.38509669410	119	26.22161583140	75.39988234840

36	26.20180439970	75.41178172840	78	26.20364626360	75.38466106440	120	26.22163525710	75.40087259160
37	26.20129620180	75.41095898450	79	26.20450411430	75.38490379150	121	26.22119492320	75.40170009070
38	26.20076333350	75.41015190780	80	26.20505018270	75.38568527820	122	26.22037865830	75.40209035370
39	26.20042168000	75.40924560330	81	26.20550234620	75.38655091000	123	26.21951150990	75.40183408120
40	26.20024612950	75.40826401700	82	26.20627009940	75.38699994010	124	26.21892728160	75.40111018920
41	26.20004650480	75.40728789330	83	26.20687853140	75.38773611650	125	26.21822832480	75.40173493310
42	26.20003568800	75.40628851500	84	26.20749637370	75.38832324870			

**The detailed Map of Tordi Sagar Wetland and its Zone of Influence is annexed herewith as Schedule-I ('A').**



**Schedule-II****Prohibited Activities in Tordi Sagar Wetland :-**

1. Conversion for non wetland uses including encroachments of any kind;
2. Setting up of any new industry and expansion of existing industries;
3. Manufacture or/and handling or/and storage or/and disposal of construction and demolition waste covered under the Construction and Demolition Waste Management Rules, 2016; hazardous substances covered under the Manufacture, Storage and Import of Hazardous Chemical Rules, 1989 or the Rules for Manufacture, Use, Import, Export and Storage of Hazardous Microorganism Genetically Engineered organized or cells, 1989 or the Hazardous Waste (Management, Handling and Transboundary Movement) Rules, 2008; electronic waste covered under the E-Waste (Management) Rules 2016; plastic waste covered under Plastic Waste (Management) Rules, 2016;
4. Solid waste storage and disposal;
5. Discharge of untreated waste and effluents from industries, cities, towns, villages and other human settlements;
6. Any construction of permanent nature except for boat jetties within fifty metres from the mean high flood level observed in the past ten years calculated from the date of commencement of these rules;
7. Commercial mining, stone quarrying and crushing units
8. Commercial water extraction Establishment of large scale commercial livestock and poultry farms;
9. Reducing area/ capacity of the water body;
10. Feeding of fishes and migratory birds by the public;
11. Any type of poaching.

**Prohibited Activities in Catchment Area/Zone of Influence :-**

1. Discharge of untreated Solid/liquid waste and effluents;
2. Manufacture or/and handling or/and storage or/and disposal of construction and demolition waste covered under the Construction and Demolition Waste Management Rules, 2016; hazardous substances covered under the Manufacture, Storage and Import of Hazardous Chemical Rules, 1989 or the Rules for Manufacture, Use, Import, Export and Storage of Hazardous Microorganism Genetically Engineered organized or cells, 1989 or the Hazardous Waste (Management, Handling and Transboundary Movement) Rules, 2008; electronic waste covered under the E-Waste (Management) Rules 2016; plastic waste covered under Plastic Waste (Management) Rules, 2016;
3. Extraction of commercial water including groundwater.

4. Any type of poaching;

### **Schedule-III**

#### **Regulated Activities in Tordi Sagar Wetland :-**

1. Fisheries;
2. Plying of boats;
3. Desilting;
4. Construction of temporary structures;
5. Water extraction for certain purposes.

#### **Regulated Activities in Catchment Area/Zone of Influence :-**

1. Conversion of land for any type of construction;
2. Setting up of any new industries and expansion of existing industries;
3. Mining.

**[F.No.6 (3) Env/2023]**

**By order of the Governor,**

Shikhar Agrawal,

**Additional Chief Secretary to the Government.**

---

**Government Central Press, Jaipur.**