 सत्यमेव जयते	राजस्थान राजपत्र विशेषांक	RAJASTHAN GAZETTE Extraordinary
	साधिकार प्रकाशित	Published by Authority
	फाल्गुन 10, गुरुवार, शाके 1945-फरवरी 29, 2024 <i>Phalguna 10 Thursday, Saka 1945- February 29, 2024</i>	

भाग 4 (ग)

उप-खण्ड(II)

राज्य सरकार तथा अन्य राज्य प्राधिकारियों द्वारा जारी किये गये कानूनी आदेश तथा
अधिसूचनाएं।

Department of Environment and Climate Change
Notification

Jaipur, February 19, 2024

S.O.565 .-Whereas the draft notification of the Orai Dam wetland, situated in village Gopal, Tehsil Begun, district Chittorgarh Rajasthan was published as required by rule 7 of the Wetland (Conservation and Management) Rules, 2017 read with the Environment (Protection) Act, 1986 (Central Act No. 29 of 1986), vide notification number F.No.6(3)Env/2023 dated 24.08.2023 in the Rajasthan Gazette, Extraordinary, Part 4 (ga), sub-part (I) G.S.R.123 dated 06.09.2023, inviting objections and suggestions from all persons likely to be affected thereby before expiry of the period of sixty days from the date on which the copies of the said notification were made available to the public.

And whereas, copies of the Gazette in which the said notification was published were made available to the public on the 06.09.2023.

And whereas, no objections and suggestions were received on the said Draft Notification.

Now therefore, in exercise of the powers conferred by rule 7 of the Wetland (Conservation and Management) Rules, 2017 read with provisions of the Environment (Protection) Act, 1986 (Central Act No. 29 of 1986), the State Government hereby notifies Orai Dam wetland, situated in village Gopal, Tehsil Begun, district Chittorgarh Rajasthan as a wetland and that,-

- (i) the extent of the wetland /wetland complex and its zone of influence shall be as described in Schedule-I of this notification;
- (ii) the activities prohibited within the wetland and its zone of influence shall be as listed in Schedule-II of this notification;
- (iii) the activities regulated within the wetland and its zone of influence, i.e. permitted only with permission of the State Government shall be as listed in Schedule-III of this notification. Request for permission for regulated activities may be made to the District Environment Committee headed by the District Collector; and
- (iv) the State Wetland Authority, Rajasthan shall monitor the enforcement of the provisions of this notification.

Schedule-I
Orai Dam Wetland comprising of total area of 608.71 Hectare within the following
boundary delineation:-
The geo-coordinates of Orai Dam Wetland of Chittorgarh, Rajasthan

Orai Dam								
S.No.	Latitude	Longitude	S.No.	Latitude	Longitude	S.No.	Latitude	Longitude
1	25.027342	74.839424	70	25.007940	74.849816	139	24.977622	74.844047
2	25.028228	74.839529	71	25.007734	74.850256	140	24.978462	74.844362
3	25.029111	74.839675	72	25.007014	74.850686	141	24.979251	74.844817
4	25.029994	74.839821	73	25.006293	74.851213	142	24.979953	74.845412
5	25.030873	74.839992	74	25.005584	74.851778	143	24.980839	74.845437
6	25.031738	74.840229	75	25.005611	74.852720	144	24.981732	74.845435
7	25.032603	74.840468	76	25.005613	74.853687	145	24.982355	74.845975
8	25.033480	74.840652	77	25.005375	74.854628	146	24.982948	74.846417
9	25.034369	74.840731	78	25.004708	74.854251	147	24.983838	74.846497
10	25.035261	74.840788	79	25.003936	74.853786	148	24.984724	74.846618
11	25.036151	74.840782	80	25.003290	74.853113	149	24.985605	74.846776
12	25.037042	74.840712	81	25.002512	74.852681	150	24.986487	74.846928
13	25.037927	74.840735	82	25.002146	74.851944	151	24.987373	74.847049
14	25.037947	74.841563	83	25.001503	74.851396	152	24.988262	74.847057
15	25.037382	74.842321	84	25.000636	74.851174	153	24.989098	74.846780
16	25.036839	74.843099	85	24.999812	74.850815	154	24.989733	74.846097
17	25.036404	74.843952	86	24.998957	74.850545	155	24.990503	74.845600
18	25.036229	74.844889	87	24.998074	74.850492	156	24.991321	74.845210
19	25.036335	74.845862	88	24.997184	74.850579	157	24.992168	74.844904
20	25.036483	74.846828	89	24.996375	74.850892	158	24.993049	74.844791
21	25.036662	74.847788	90	24.996949	74.851376	159	24.993928	74.844739
22	25.036870	74.848740	91	24.996754	74.851964	160	24.994334	74.843984
23	25.037109	74.849667	92	24.995882	74.852171	161	24.993804	74.843407
24	25.036831	74.850568	93	24.995008	74.852296	162	24.992928	74.843578
25	25.036233	74.850956	94	24.994143	74.852084	163	24.992061	74.843810
26	25.035808	74.850221	95	24.993267	74.852179	164	24.991213	74.843571
27	25.034959	74.849922	96	24.992385	74.852240	165	24.990933	74.842754
28	25.034076	74.849783	97	24.991565	74.851880	166	24.991735	74.842438
29	25.033188	74.849675	98	24.990722	74.851586	167	24.992233	74.841828
30	25.032301	74.849567	99	24.989840	74.851452	168	24.992632	74.841087
31	25.031414	74.849455	100	24.988948	74.851493	169	24.993262	74.840452
32	25.030529	74.849326	101	24.988104	74.851239	170	24.994133	74.840514
33	25.029668	74.849067	102	24.987360	74.850697	171	24.994868	74.841058
34	25.028786	74.848914	103	24.986563	74.850266	172	24.995746	74.841110
35	25.027927	74.848652	104	24.985706	74.850000	173	24.996638	74.841055
36	25.027045	74.848507	105	24.984819	74.849891	174	24.997525	74.840950
37	25.026157	74.848423	106	24.983938	74.849739	175	24.998411	74.840826
38	25.025327	74.848080	107	24.983187	74.850090	176	24.999289	74.840669
39	25.024653	74.847447	108	24.982608	74.849525	177	25.000174	74.840582
40	25.024640	74.846525	109	24.981987	74.848825	178	25.001067	74.840543
41	25.024533	74.845793	110	24.981180	74.848417	179	25.001959	74.840497
42	25.023647	74.845911	111	24.980310	74.848202	180	25.002848	74.840412
43	25.022803	74.846214	112	24.979441	74.847978	181	25.003738	74.840326
44	25.021975	74.846569	113	24.978598	74.847656	182	25.004627	74.840241
45	25.021109	74.846808	114	24.977755	74.847333	183	25.005513	74.840117
46	25.020439	74.847366	115	24.976895	74.847067	184	25.006395	74.839964
47	25.021046	74.847844	116	24.976078	74.846690	185	25.007278	74.839822

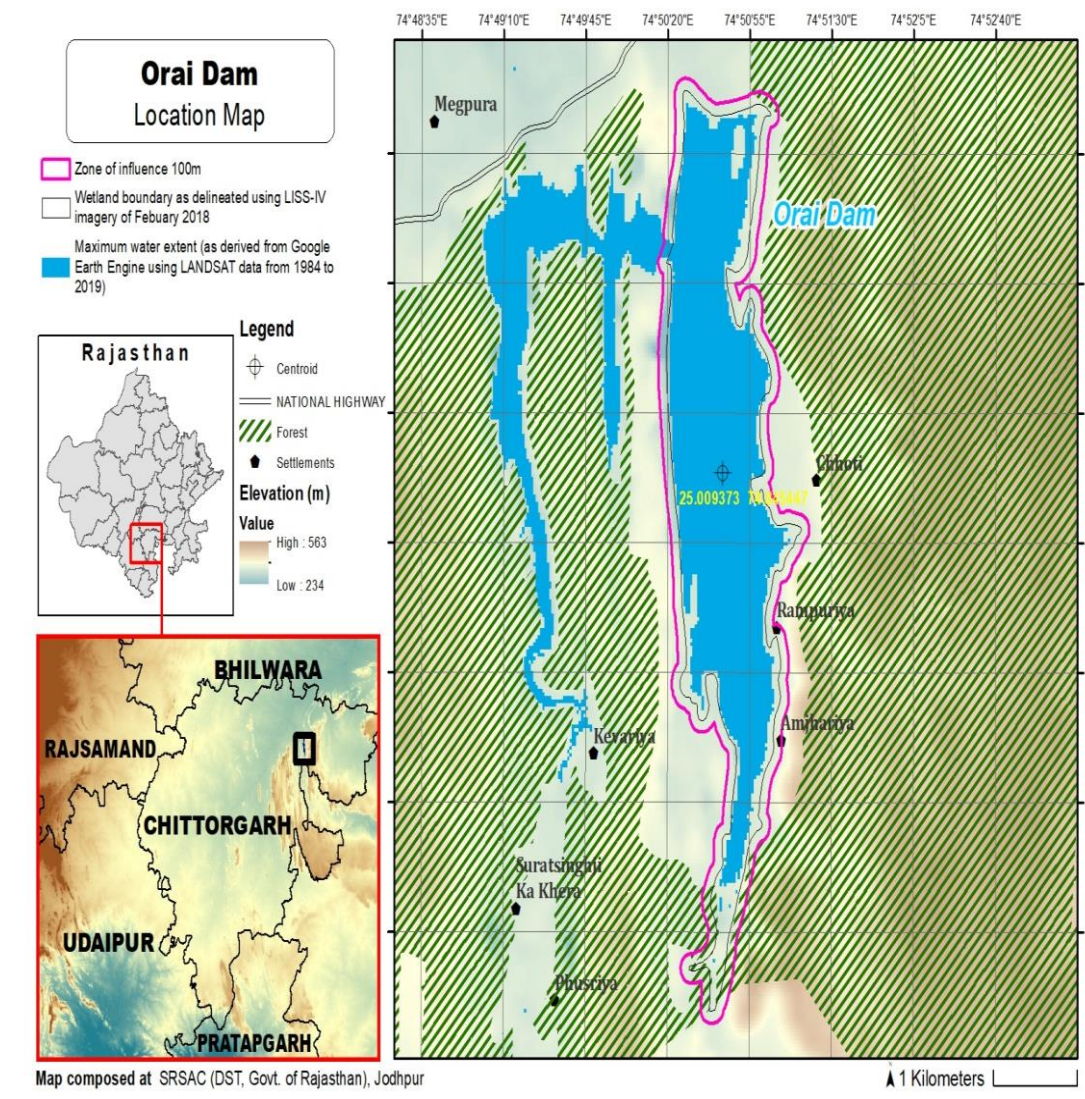
48	25.021837	74.848276	117	24.975228	74.846388	186	25.008164	74.839696
49	25.022534	74.848755	118	24.974377	74.846095	187	25.009049	74.839570
50	25.021780	74.849157	119	24.973490	74.845983	188	25.009935	74.839444
51	25.020896	74.849057	120	24.972609	74.845822	189	25.010821	74.839321
52	25.020044	74.849181	121	24.971731	74.845644	190	25.011710	74.839235
53	25.019279	74.849679	122	24.970885	74.845331	191	25.012600	74.839149
54	25.018592	74.850304	123	24.970049	74.844986	192	25.013489	74.839063
55	25.017845	74.850818	124	24.969243	74.844581	193	25.014379	74.838977
56	25.016995	74.851109	125	24.969308	74.843896	194	25.015268	74.838891
57	25.016121	74.851093	126	24.970200	74.843943	195	25.016159	74.838827
58	25.015403	74.850663	127	24.971092	74.843979	196	25.017051	74.838791
59	25.014777	74.850076	128	24.971977	74.843900	197	25.017944	74.838755
60	25.013907	74.849868	129	24.972297	74.843174	198	25.018836	74.838749
61	25.013014	74.849841	130	24.972106	74.842223	199	25.019726	74.838819
62	25.012123	74.849886	131	24.972394	74.841526	200	25.020612	74.838944
63	25.011242	74.850040	132	24.972608	74.842428	201	25.021498	74.839068
64	25.010384	74.850307	133	24.972898	74.843351	202	25.022383	74.839193
65	25.009526	74.850401	134	24.973417	74.844142	203	25.023270	74.839305
66	25.009134	74.849581	135	24.974173	74.844640	204	25.024163	74.839321
67	25.008760	74.848782	136	24.975060	74.844737	205	25.025027	74.839210
68	25.007945	74.849051	137	24.975930	74.844534	206	25.025587	74.838947
69	25.007229	74.849424	138	24.976740	74.844129	207	25.026385	74.839385

Details of Catchment Area/Zone of Influence of Orai Dam Wetland falling within the boundary limit of Chittorgarh, Rajasthan:- Total Area Of = 203.82 Ha
The geo-coordinates of Orai Dam Wetland and its Zone of influence

Orai Dam								
S.No.	Latitude	Longitude	S.No.	Latitude	Longitude	S.No.	Latitude	Longitude
1	25.037198	74.845526	67	24.996050	74.853135	133	24.990737	74.844414
2	25.037330	74.846494	68	24.995176	74.853281	134	24.990151	74.843724
3	25.037514	74.847453	69	24.994298	74.853150	135	24.989992	74.842780
4	25.037715	74.848407	70	24.993430	74.853143	136	24.990398	74.841930
5	25.037969	74.849332	71	24.992547	74.853257	137	24.991196	74.841526
6	25.037929	74.850295	72	24.991681	74.853045	138	24.991764	74.840855
7	25.037538	74.851167	73	24.990880	74.852615	139	24.992215	74.840026
8	25.036921	74.851864	74	24.990002	74.852449	140	24.992971	74.839524
9	25.036064	74.852036	75	24.989110	74.852461	141	24.993853	74.839427
10	25.035410	74.851418	76	24.988228	74.852373	142	24.994695	74.839730
11	25.034799	74.850889	77	24.987438	74.851927	143	24.995459	74.840146
12	25.033916	74.850750	78	24.986693	74.851388	144	24.996351	74.840092
13	25.033029	74.850642	79	24.985858	74.851047	145	24.997239	74.840003
14	25.032141	74.850533	80	24.984976	74.850908	146	24.998125	74.839875
15	25.031254	74.850420	81	24.984094	74.850759	147	24.999006	74.839738
16	25.030369	74.850292	82	24.983282	74.851064	148	24.999888	74.839614
17	25.029507	74.850035	83	24.982414	74.850899	149	25.000780	74.839575
18	25.028626	74.849879	84	24.981863	74.850162	150	25.001672	74.839536
19	25.027766	74.849625	85	24.981236	74.849509	151	25.002562	74.839455
20	25.026885	74.849478	86	24.980387	74.849221	152	25.003452	74.839370
21	25.025997	74.849387	87	24.979513	74.849019	153	25.004341	74.839285
22	25.025147	74.849095	88	24.978664	74.848719	154	25.005228	74.839174
23	25.024400	74.848564	89	24.977821	74.848396	155	25.006110	74.839021
24	25.023815	74.847829	90	24.976969	74.848104	156	25.006993	74.838874
25	25.023585	74.846932	91	24.976117	74.847819	157	25.007878	74.838748

26	25.022767	74.847316	92	24.975297	74.847442	158	25.008764	74.838622
27	25.022930	74.847699	93	24.974447	74.847140	159	25.009650	74.838497
28	25.023398	74.848497	94	24.973570	74.846979	160	25.010535	74.838371
29	25.023228	74.849427	95	24.972687	74.846834	161	25.011424	74.838279
30	25.022507	74.849973	96	24.971809	74.846656	162	25.012314	74.838193
31	25.021634	74.850138	97	24.970951	74.846391	163	25.013203	74.838107
32	25.020749	74.850028	98	24.970110	74.846060	164	25.014093	74.838021
33	25.019950	74.850364	99	24.969294	74.845668	165	25.014982	74.837935
34	25.019254	74.850977	100	24.968504	74.845239	166	25.015872	74.837858
35	25.018547	74.851574	101	24.968213	74.844338	167	25.016765	74.837822
36	25.017711	74.851916	102	24.968362	74.843393	168	25.017657	74.837786
37	25.016843	74.852139	103	24.969103	74.842919	169	25.018549	74.837751
38	25.015964	74.852059	104	24.969995	74.842951	170	25.019441	74.837805
39	25.015119	74.851773	105	24.970887	74.842999	171	25.020328	74.837916
40	25.014575	74.851041	106	24.971262	74.842576	172	25.021213	74.838040
41	25.013710	74.850842	107	24.971225	74.841606	173	25.022099	74.838165
42	25.012817	74.850828	108	24.971610	74.840759	174	25.022985	74.838289
43	25.011927	74.850890	109	24.972454	74.840533	175	25.023876	74.838336
44	25.011056	74.851104	110	24.973194	74.841029	176	25.024619	74.838002
45	25.010208	74.851410	111	24.973406	74.841954	177	25.025466	74.837816
46	25.009323	74.851378	112	24.973683	74.842883	178	25.026276	74.838226
47	25.008593	74.851006	113	24.974253	74.843621	179	25.027103	74.838444
48	25.007741	74.851255	114	24.975129	74.843737	180	25.027992	74.838499
49	25.007090	74.851894	115	24.975968	74.843433	181	25.028875	74.838645
50	25.006458	74.852393	116	24.976806	74.843112	182	25.029758	74.838791
51	25.006565	74.853361	117	24.977693	74.843070	183	25.030641	74.838939
52	25.006398	74.854322	118	24.978547	74.843338	184	25.031515	74.839137
53	25.006086	74.855234	119	24.979353	74.843757	185	25.032373	74.839411
54	25.005332	74.855706	120	24.980107	74.844276	186	25.033248	74.839606
55	25.004504	74.855425	121	24.980929	74.844453	187	25.034131	74.839734
56	25.003819	74.854830	122	24.981822	74.844458	188	25.035022	74.839791
57	25.003115	74.854253	123	24.982668	74.844737	189	25.035913	74.839818
58	25.002419	74.853657	124	24.983221	74.845458	190	25.036804	74.839747
59	25.001624	74.853242	125	24.984111	74.845539	191	25.037696	74.839712
60	25.001240	74.852396	126	24.984995	74.845674	192	25.038544	74.839968
61	25.000413	74.852124	127	24.985877	74.845831	193	25.038998	74.840783
62	24.999570	74.851804	128	24.986759	74.845983	194	25.038865	74.841739
63	24.998732	74.851497	129	24.987646	74.846087	195	25.038360	74.842538
64	24.998056	74.851673	130	24.988528	74.846015	196	25.037821	74.843319
65	24.997728	74.852551	131	24.989161	74.845328	197	25.037331	74.844132
66	24.996922	74.852927	132	24.989932	74.844833			

The detailed Map of Orai Dam Wetland and its Zone of Influence is annexed herewith as Schedule-I ('A').



Schedule-II

Prohibited Activities in Orai Dam Wetland:-

1. Conversion for non wetland uses including encroachments of any kind;
2. Setting up of any new industry and expansion of existing industries;
3. Manufacture or/and handling or/and storage or/and disposal of construction and demolition waste covered under the Construction and Demolition Waste Management Rules, 2016; hazardous substances covered under the Manufacture, Storage and Import of Hazardous Chemical Rules, 1989 or the Rules for Manufacture, Use, Import, Export and Storage of Hazardous Microorganism Genetically Engineered organized or cells, 1989 or the Hazardous Waste (Management, Handling and Transboundary Movement) Rules, 2008; electronic waste covered under the E-Waste (Management) Rules 2016; plastic waste covered under Plastic Waste (Management) Rules, 2016;
4. Solid waste storage and disposal;

5. Discharge of untreated waste and effluents from industries, cities, towns, villages and other human settlements;
6. Any construction of permanent nature except for boat jetties within fifty metres from the mean high flood level observed in the past ten years calculated from the date of commencement of these rules;
7. Commercial mining, stone quarrying and crushing units
8. Commercial water extraction Establishment of large scale commercial livestock and poultry farms;
9. Reducing area/ capacity of the water body;
10. Feeding of fishes and migratory birds by the public;
11. Any type of poaching.

Prohibited Activities in Catchment Area/Zone of Influence:-

1. Discharge of untreated Solid/liquid waste and effluents;
2. Manufacture or/and handling or/and storage or/and disposal of construction and demolition waste covered under the Construction and Demolition Waste Management Rules, 2016; hazardous substances covered under the Manufacture, Storage and Import of Hazardous Chemical Rules, 1989 or the Rules for Manufacture, Use, Import, Export and Storage of Hazardous Microorganism Genetically Engineered organized or cells, 1989 or the Hazardous Waste (Management, Handling and Transboundary Movement) Rules, 2008; electronic waste covered under the E-Waste (Management) Rules 2016; plastic waste covered under Plastic Waste (Management) Rules, 2016;
3. Extraction of commercial water including groundwater.
4. Any type of poaching;

Schedule-III

Regulated Activities in Orai Dam Wetland:-

1. Fisheries;
2. Plying of boats;
3. Desilting;
4. Construction of temporary structures;
5. Water extraction for certain purposes.

Regulated Activities in Catchment Area/Zone of Influence:-

1. Conversion of land for any type of construction;
2. Setting up of any new industries and expansion of existing industries;
3. Mining.

[F.No.6 (3) Env/2023]

By order of the Governor,

Shikhar Agrawal,
Additional Chief Secretary to the Government.