 सत्यमेव जयते	राजस्थान राजपत्र विशेषांक	RAJASTHAN GAZETTE Extraordinary
	साधिकार प्रकाशित	Published by Authority
	ज्येष्ठ 12, शुक्रवार, शाके 1945-जून 02, 2023 <i>Jyaistha 12, Friday, Saka 1945- June 02, 2023</i>	

भाग 4 (ग)

उप-खण्ड(II)

राज्य सरकार तथा अन्य राज्य प्राधिकारियों द्वारा जारी किये गये कानूनी आदेश तथा अधिसूचनाएं।

Department of Environment and Climate Change
Notification

Jaipur, May 30, 2023

S.O.95 .-The following draft of the notification, which the State Government proposes to issue in exercise of the powers conferred by rule 7 of the Wetland (Conservation and Management) Rules, 2017 read with Environment (Protection) Act, 1986 (Central Act No. 29 of 1986), is hereby published for the information of the persons likely to be concerned or affected thereby and notice is hereby given to them that the said draft notification shall be taken into consideration after the expiry of a period of sixty days from the date on which copies of this notification as published in the Official Gazette are made available to the public.

Any person interested in making any objection or suggestion on the proposals contained in the draft notification may forward the same in writing for consideration to the Director cum Joint Secretary, Department of Environment and Climate Change Room No. 8240 SSO Building, Government Secretariat, Jaipur, Rajasthan or at env_raj@yahoo.co.in.

Draft Notification

WHEREAS, the Dingri wetland, situated in village Dingri, Tehsil Sarada, district Udaipur Rajasthan, is considered to be critically significant for its ecosystem services and biodiversity values for the local communities and society at large;

AND WHEREAS, it is considered that for sustaining the said values, the ecological character of wetland ecosystem needs to be maintained by regulating developmental activities within the wetland as well as within its zone of influence;

NOW THEREFORE, the State Government declares that the Dingri wetland shall be covered under the provisions of the Wetlands (Conservation and Management) Rules, 2017 and notifies that,-

- (i) the extent of the wetland /wetland complex and its zone of influence shall be as described in Schedule-I of this notification;
- (ii) the activities prohibited within the wetland and its zone of influence shall be as listed in Schedule-II of this notification;
- (iii) the activities regulated within the wetland and its zone of influence, i.e. permitted only with permission of the State Government shall be as listed in Schedule-III of this notification. Request for permission for regulated activities may be made to the District

Environment Committee headed by the District Collector; and

- (iv) the State Wetland Authority, Rajasthan shall monitor the enforcement of the provisions of this notification.

Schedule-I

Dingri Wetland Complex comprising of total area of 24.17 Hectare within the following boundary delineation:-

The geo-coordinates of Dingri Wetland of Udaipur, Rajasthan

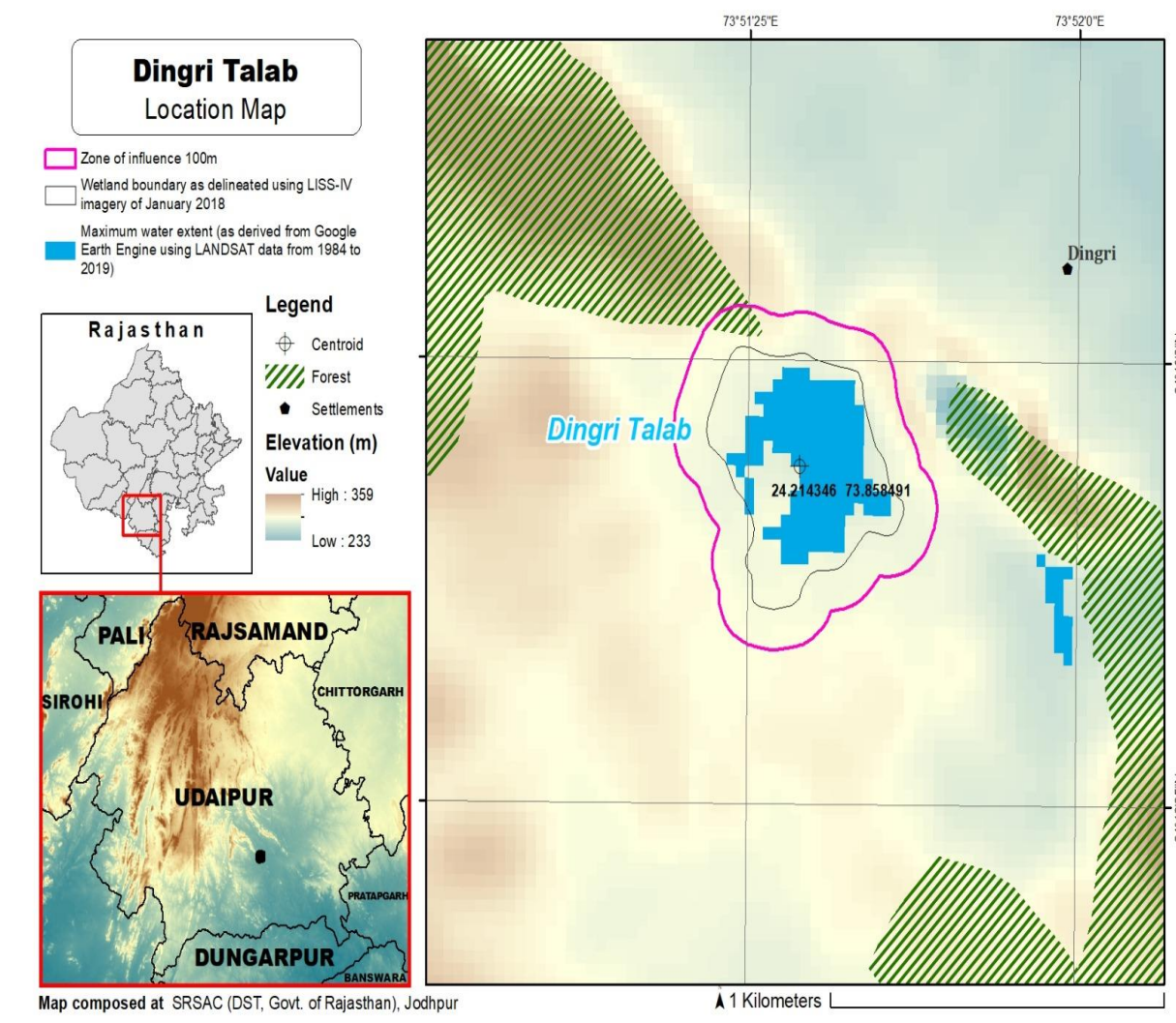
Dingri Talab					
S.No.	Latitude	Longitude	S.No.	Latitude	Longitude
1	24.216603	73.859382	11	24.211255	73.857539
2	24.216319	73.860250	12	24.211884	73.857098
3	24.215454	73.860480	13	24.212676	73.857097
4	24.214650	73.860875	14	24.213504	73.856907
5	24.213840	73.861235	15	24.214250	73.856391
6	24.213104	73.861439	16	24.214912	73.855777
7	24.212938	73.860604	17	24.215771	73.855928
8	24.212335	73.859927	18	24.216592	73.856314
9	24.212078	73.859041	19	24.216916	73.857082
10	24.211426	73.858457	20	24.216768	73.858031

Details of Catchment Area/Zone of Influence of Dingri Wetland falling within the boundary limit of Udaipur, Rajasthan:- Total Area Of = 47.65 ha

The geo-coordinates of Dingri Wetland and its Zone of influence

Dingri Talab					
S.No.	Latitude	Longitude	S.No.	Latitude	Longitude
1	24.210513	73.856836	14	24.217471	73.859621
2	24.211154	73.856194	15	24.217270	73.860570
3	24.212009	73.855959	16	24.216604	73.861177
4	24.212875	73.856093	17	24.215738	73.861406
5	24.213612	73.855636	18	24.214949	73.861839
6	24.214280	73.855018	19	24.214184	73.862276
7	24.215131	73.854759	20	24.213347	73.862546
8	24.215995	73.854974	21	24.212513	73.862209
9	24.216824	73.855341	22	24.212002	73.861435
10	24.217554	73.855890	23	24.211687	73.860607
11	24.217864	73.856781	24	24.211241	73.859783
12	24.217680	73.857727	25	24.210734	73.859077
13	24.217723	73.858693	26	24.210380	73.858202

The detailed Map of Dingri Wetland and its Zone of Influence is annexed herewith as Schedule-I ('A').



Schedule-II

Prohibited Activities in Dingri Wetland:-

1. Conversion for non wetland uses including encroachments of any kind;
2. Setting up of any new industry and expansion of existing industries;
3. Manufacture or/and handling or/and storage or/and disposal of construction and demolition waste covered under the Construction and Demolition Waste Management Rules, 2016; hazardous substances covered under the Manufacture, Storage and Import of Hazardous Chemical Rules, 1989 or the Rules for Manufacture, Use, Import, Export and Storage of Hazardous Microorganism Genetically Engineered organized or cells, 1989 or the Hazardous Waste (Management, Handling and Transboundary Movement) Rules, 2008; electronic waste covered under the E-Waste (Management) Rules 2016; plastic waste covered under Plastic Waste (Management) Rules, 2016;
4. Solid waste storage and disposal;
5. Discharge of untreated waste and effluents from industries, cities, towns, villages and other human settlements;

6. Any construction of permanent nature except for boat jetties within fifty metres from the mean high flood level observed in the past ten years calculated from the date of commencement of these rules;
7. Commercial mining, stone quarrying and crushing units
8. Commercial water extraction Establishment of large scale commercial livestock and poultry farms;
9. Reducing area/ capacity of the water body;
10. Feeding of fishes and migratory birds by the public;
11. Any type of poaching.

Prohibited Activities in Catchment Area/Zone of Influence:-

1. Discharge of untreated Solid/liquid waste and effluents;
2. Manufacture or/and handling or/and storage or/and disposal of construction and demolition waste covered under the Construction and Demolition Waste Management Rules, 2016; hazardous substances covered under the Manufacture, Storage and Import of Hazardous Chemical Rules, 1989 or the Rules for Manufacture, Use, Import, Export and Storage of Hazardous Microorganism Genetically Engineered organized or cells, 1989 or the Hazardous Waste (Management, Handling and Transboundary Movement) Rules, 2008; electronic waste covered under the E-Waste (Management) Rules 2016; plastic waste covered under Plastic Waste (Management) Rules, 2016;
3. Extraction of commercial water including groundwater.
4. Any type of poaching;

Schedule-III

Regulated Activities in Dingri Wetland:-

1. Fisheries;
2. Plying of boats;
3. Desilting;
4. Construction of temporary structures;
5. Water extraction for certain purposes.

Regulated Activities in Catchment Area/Zone of Influence:-

1. Conversion of land for any type of construction;
2. Setting up of any new industries and expansion of existing industries;
3. Mining.

[F.No.6 (3) Env/2023]
By order of the Governor,

Shikhar Agrawal,
Additional Chief Secretary to the Government.

Government Central Press, Jaipur.