 सत्यमेव जयते	राजस्थान राजपत्र विशेषांक	RAJASTHAN GAZETTE Extraordinary
	साधिकार प्रकाशित	Published by Authority
	ज्येष्ठ 12, शुक्रवार, शाके 1945-जून 02, 2023 <i>Jyaistha 12, Friday, Saka 1945- June 02, 2023</i>	

भाग 4 (ग)

उप-खण्ड(II)

राज्य सरकार तथा अन्य राज्य प्राधिकारियों द्वारा जारी किये गये कानूनी आदेश तथा अधिसूचनाएं।

Department of Environment and Climate Change
Notification

Jaipur, May 30, 2023

S.O.98 .-The following draft of the notification, which the State Government proposes to issue in exercise of the powers conferred by rule 7 of the Wetland (Conservation and Management) Rules, 2017 read with Environment (Protection) Act, 1986 (Central Act No. 29 of 1986), is hereby published for the information of the persons likely to be concerned or affected thereby and notice is hereby given to them that the said draft notification shall be taken into consideration after the expiry of a period of sixty days from the date on which copies of this notification as published in the Official Gazette are made available to the public.

Any person interested in making any objection or suggestion on the proposals contained in the draft notification may forward the same in writing for consideration to the State Government within the period of 60 days as specified above to the Director cum Joint Secretary, Department of Environment and Climate Change Room No. 8240 SSO Building, Government Secretariat, Jaipur, Rajasthan or at env_raj@yahoo.co.in.

Draft Notification

WHEREAS, the Madri Dam wetland, situated in village Madri, Tehsil Jhadol, district Udaipur Rajasthan, is considered to be critically significant for its ecosystem services and biodiversity values for the local communities and society at large;

AND WHEREAS, it is considered that for sustaining the said values, the ecological character of wetland ecosystem needs to be maintained by regulating developmental activities within the wetland as well as within its zone of influence;

NOW THEREFORE, the State Government declares that the Madri Dam wetland shall be covered under the provisions of the Wetlands (Conservation and Management) Rules, 2017 and notifies that,-

- (i) the extent of the wetland /wetland complex and its zone of influence shall be as described in Schedule-I of this notification;
- (ii) the activities prohibited within the wetland and its zone of influence shall be as listed in Schedule-II of this notification;
- (iii) the activities regulated within the wetland and its zone of influence, i.e. permitted only with permission of the State Government shall be as listed in Schedule-III of this notification. Request for permission for regulated activities may be made to the District

Environment Committee headed by the District Collector; and

- (iv) the State Wetland Authority, Rajasthan shall monitor the enforcement of the provisions of this notification.

Schedule-I

Madri Dam Wetland Complex comprising of total area of 56.79 Hectare within the following boundary delineation:-

The geo-coordinates of Madri Dam Wetland of Udaipur, Rajasthan

Madri Dam								
S.No.	Latitude	Longitude	S.No.	Latitude	Longitude	S.No.	Latitude	Longitude
1	24.542098	73.522298	23	24.544681	73.528732	45	24.539105	73.522522
2	24.541234	73.522524	24	24.545308	73.529023	46	24.538234	73.522321
3	24.541548	73.522958	25	24.544683	73.529590	47	24.537713	73.521560
4	24.542412	73.523036	26	24.543972	73.530180	48	24.537871	73.520655
5	24.543071	73.522661	27	24.543313	73.530839	49	24.538260	73.519774
6	24.542876	73.523518	28	24.542472	73.531044	50	24.538642	73.518891
7	24.543713	73.523460	29	24.541622	73.530781	51	24.538649	73.517938
8	24.544549	73.523752	30	24.541049	73.530104	52	24.539186	73.517449
9	24.544132	73.524418	31	24.540705	73.529287	53	24.539820	73.517423
10	24.543244	73.524339	32	24.539871	73.529006	54	24.540090	73.518345
11	24.542361	73.524426	33	24.539952	73.528192	55	24.540753	73.518018
12	24.541574	73.524851	34	24.540105	73.527267	56	24.541581	73.518152
13	24.541004	73.524256	35	24.539608	73.526770	57	24.541747	73.519085
14	24.541012	73.525089	36	24.538930	73.526970	58	24.541946	73.519728
15	24.541538	73.525626	37	24.538537	73.526233	59	24.542535	73.519054
16	24.542114	73.526039	38	24.539327	73.525916	60	24.543407	73.518929
17	24.542727	73.526512	39	24.539806	73.525218	61	24.544076	73.519459
18	24.542062	73.526946	40	24.539543	73.524374	62	24.544782	73.519482
19	24.542700	73.527456	41	24.538785	73.524322	63	24.544925	73.520003
20	24.543205	73.528203	42	24.538084	73.523933	64	24.544076	73.520246
21	24.543274	73.529163	43	24.538475	73.523191	65	24.543333	73.520698
22	24.543934	73.529269	44	24.539348	73.522996	66	24.542798	73.521479

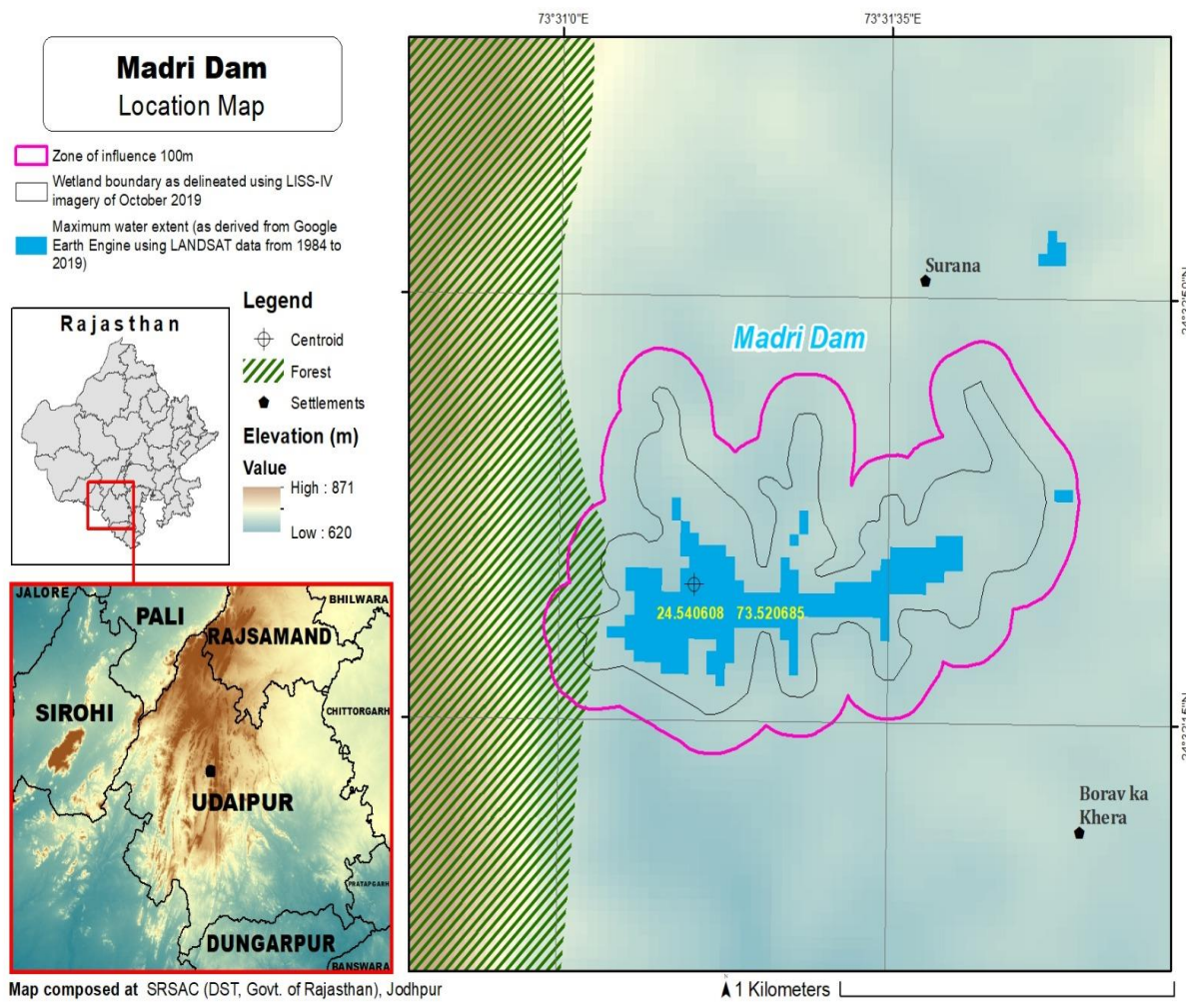
Details of Catchment Area/Zone of Influence of Madri Dam Wetland falling within the boundary limit of Udaipur, Rajasthan:- Total Area Of = 58.92 ha

The geo-coordinates of Madri Dam Wetland and its Zone of influence

Madri Dam								
S.No.	Latitude	Longitude	S.No.	Latitude	Longitude	S.No.	Latitude	Longitude
1	24.536968	73.520422	19	24.543925	73.521497	37	24.543789	73.531687
2	24.537367	73.519548	20	24.543904	73.522301	38	24.542955	73.531995
3	24.537757	73.518668	21	24.544639	73.522687	39	24.542072	73.531969
4	24.537738	73.517709	22	24.545331	73.523275	40	24.541231	73.531660
5	24.538101	73.516835	23	24.545442	73.524231	41	24.540494	73.531117
6	24.538895	73.516459	24	24.545025	73.525051	42	24.540157	73.530220
7	24.539751	73.516265	25	24.544204	73.525392	43	24.539382	73.529858
8	24.540511	73.516720	26	24.543313	73.525345	44	24.538881	73.529068
9	24.541223	73.516960	27	24.543346	73.525613	45	24.538908	73.528112
10	24.542045	73.517316	28	24.543622	73.526523	46	24.538205	73.527591
11	24.542593	73.518014	29	24.543893	73.527369	47	24.537643	73.526862
12	24.543478	73.517954	30	24.544322	73.527829	48	24.537684	73.525900
13	24.544319	73.518257	31	24.545191	73.527625	49	24.537976	73.525192
14	24.545143	73.518446	32	24.545913	73.528129	50	24.537360	73.524522
15	24.545839	73.519016	33	24.546239	73.529034	51	24.537203	73.523584

16	24.545971	73.519953	34	24.545897	73.529893	52	24.537298	73.522695
17	24.545500	73.520754	35	24.545151	73.530426	53	24.536859	73.521849
18	24.544696	73.521159	36	24.544448	73.531026			

The detailed Map of Madri Dam Wetland and its Zone of Influence is annexed herewith as Schedule-I ('A').



Schedule-II

Prohibited Activities in Madri Dam Wetland:-

1. Conversion for non wetland uses including encroachments of any kind;
2. Setting up of any new industry and expansion of existing industries;
3. Manufacture or/and handling or/and storage or/and disposal of construction and demolition waste covered under the Construction and Demolition Waste Management Rules, 2016; hazardous substances covered under the Manufacture, Storage and Import of Hazardous Chemical Rules, 1989 or the Rules for Manufacture, Use, Import, Export and Storage of Hazardous Microorganism Genetically Engineered organized or cells, 1989 or the Hazardous Waste (Management, Handling and Transboundary Movement) Rules, 2008; electronic waste covered under the E-Waste (Management) Rules 2016; plastic waste covered under Plastic Waste (Management) Rules, 2016;
4. Solid waste storage and disposal;

5. Discharge of untreated waste and effluents from industries, cities, towns, villages and other human settlements;
6. Any construction of permanent nature except for boat jetties within fifty metres from the mean high flood level observed in the past ten years calculated from the date of commencement of these rules;
7. Commercial mining, stone quarrying and crushing units
8. Commercial water extraction Establishment of large scale commercial livestock and poultry farms;
9. Reducing area/ capacity of the water body;
10. Feeding of fishes and migratory birds by the public;
11. Any type of poaching.

Prohibited Activities in Catchment Area/Zone of Influence:-

1. Discharge of untreated Solid/liquid waste and effluents;
2. Manufacture or/and handling or/and storage or/and disposal of construction and demolition waste covered under the Construction and Demolition Waste Management Rules, 2016; hazardous substances covered under the Manufacture, Storage and Import of Hazardous Chemical Rules, 1989 or the Rules for Manufacture, Use, Import, Export and Storage of Hazardous Microorganism Genetically Engineered organized or cells, 1989 or the Hazardous Waste (Management, Handling and Transboundary Movement) Rules, 2008;electronic waste covered under the E-Waste (Management) Rules 2016; plastic waste covered under Plastic Waste (Management) Rules, 2016;
3. Extraction of commercial water including groundwater.
4. Any type of poaching;

Schedule-III

Regulated Activities in Madri Dam Wetland:-

1. Fisheries;
2. Plying of boats;
3. Desilting;
4. Construction of temporary structures;
5. Water extraction for certain purposes.

Regulated Activities in Catchment Area/Zone of Influence:-

1. Conversion of land for any type of construction;
2. Setting up of any new industries and expansion of existing industries;
3. Mining.

[F.No.6 (3) Env/2023]

By order of the Governor,

Shikhar Agrawal,

Additional Chief Secretary to the Government.

Government Central Press, Jaipur.