



सत्यमेव जयते

राजस्थान राजपत्र
विशेषांक

साधिकार प्रकाशित

RAJASTHAN GAZETTE
Extraordinary

Published by Authority

भाद्र 15, बुधवार, शाके 1945-सितम्बर 06, 2023
Bhadra 15, Wednesday, Saka 1945- September 06, 2023

भाग 4 (ग)

उप-खण्ड (I)

राज्य सरकार तथा अन्य राज्य-प्राधिकारियों द्वारा जारी किये गये (सामान्य आदेशों, उप-विधियों आदि को सम्मिलित करते हुए) सामान्य कानूनी नियम।

Department of Environment and Climate Change
Notification

Jaipur, August 24, 2023

G.S.R.121 .-The following draft of the notification, which the State Government proposes to issue in exercise of the powers conferred by rule 7 of the Wetland (Conservation and Management) Rules, 2017 read with provisions of the Environment (Protection) Act, 1986 (Central Act No. 29 of 1986), is hereby published for the information of the persons likely to be concerned or affected thereby and notice is hereby given to them that the said draft notification shall be taken into consideration after the expiry of a period of sixty days from the date on which copies of this notification as published in the Official Gazette are made available to the public.

Any person interested in making any objection or suggestion on the proposals contained in the draft notification may forward the same in writing for consideration to the State Government within the period of 60 days as specified above to the Director cum Joint Secretary, Department of Environment and Climate Change Room No. 8240 SSO Building, Government Secretariat, Jaipur, Rajasthan or at env_raj@yahoo.co.in.

Draft Notification

WHEREAS, the Suthar Madra wetland, situated in village Kojawada, Tehsil Rishabhdev, district Udaipur Rajasthan, is considered to be critically significant for its ecosystem services and biodiversity values for the local communities and society at large;

AND WHEREAS, it is considered that for sustaining the said values, the ecological character of wetland ecosystem needs to be maintained by regulating developmental activities within the wetland as well as within its zone of influence;

NOW THEREFORE, the State Government declares that the Suthar Madra wetland shall be covered under the provisions of the Wetlands (Conservation and Management) Rules, 2017 and notifies that,-

- (i) the extent of the wetland /wetland complex and its zone of influence shall be as described in Schedule-I of this notification;
- (ii) the activities prohibited within the wetland and its zone of influence shall be as listed in Schedule-II of this notification;
- (iii) the activities regulated within the wetland and its zone of influence, i.e. permitted only with permission of the State Government shall be as listed in Schedule-III of this

notification. Request for permission for regulated activities may be made to the District Environment Committee headed by the District Collector; and

- (iv) the State Wetland Authority, Rajasthan shall monitor the enforcement of the provisions of this notification.

Schedule-I

Suthar Madra Wetland comprising of total area of 24.06 Hectare within the following boundary delineation:-

The geo-coordinates of Suthar Madra Wetland of Udaipur, Rajasthan

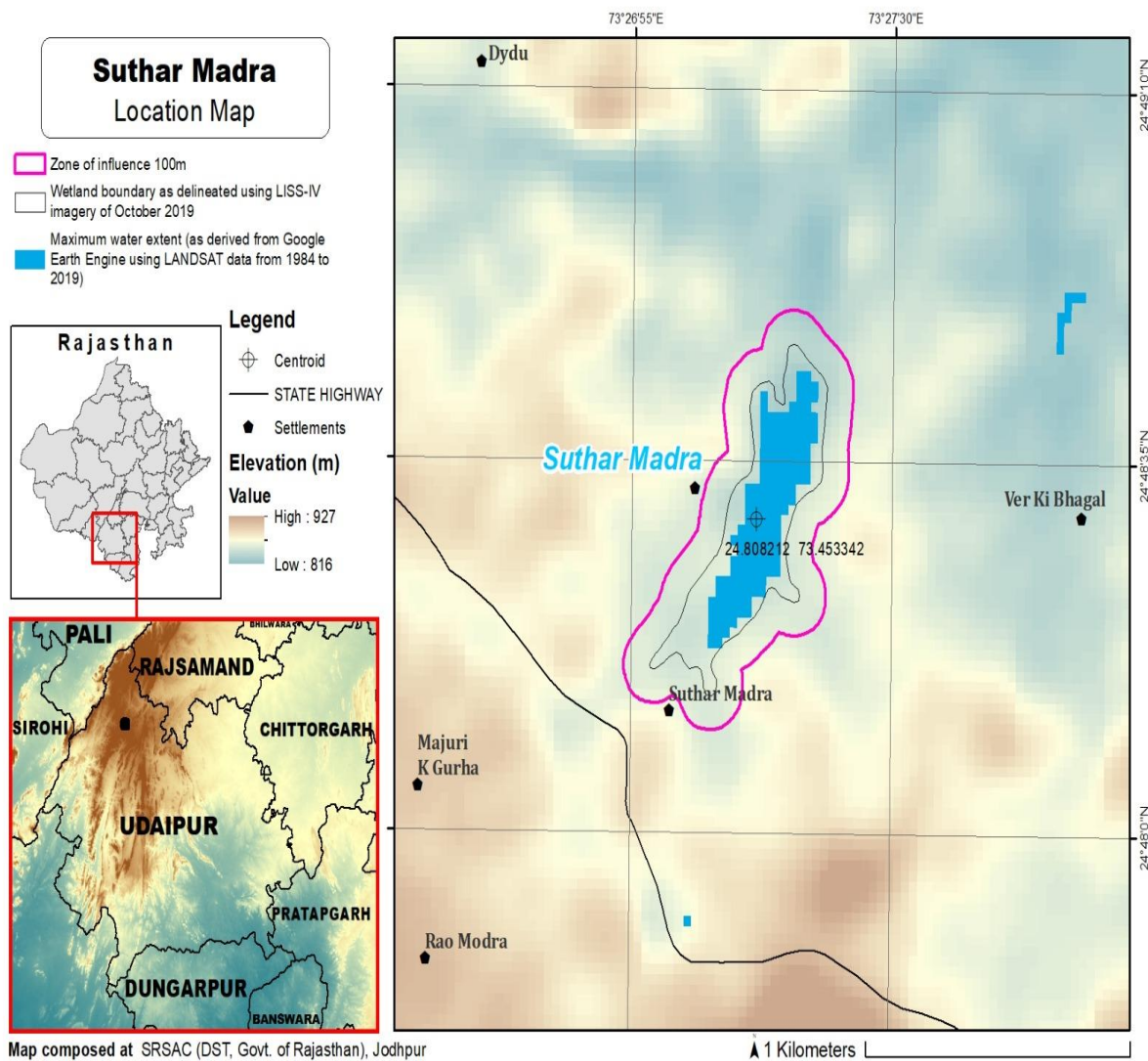
Suthar Madra					
S.No	Latitude	Longitude	S.No	Latitude	Longitude
1	24.809202	73.452701	16	24.806433	73.454833
2	24.809893	73.453214	17	24.806168	73.454375
3	24.810778	73.453100	18	24.806178	73.453650
4	24.811623	73.453234	19	24.805501	73.453035
5	24.811557	73.453946	20	24.805008	73.452229
6	24.811561	73.454309	21	24.804312	73.451701
7	24.812418	73.454432	22	24.803594	73.451638
8	24.812594	73.455009	23	24.804308	73.451220
9	24.812001	73.455737	24	24.804674	73.450466
10	24.811160	73.455899	25	24.804297	73.449621
11	24.810274	73.455773	26	24.804848	73.449798
12	24.809384	73.455775	27	24.805511	73.450445
13	24.808827	73.455066	28	24.806314	73.450867
14	24.808082	73.454570	29	24.806967	73.451533
15	24.807211	73.454438	30	24.807690	73.452070

Details of Catchment Area/Zone of Influence of Suthar Madra Wetland falling within the boundary limit of Udaipur, Rajasthan:- Total Area Of = 32.41 Ha

The geo-coordinates of Suthar Madra Wetland and its Zone of influence

Suthar Madra					
S.No.	Latitude	Longitude	S.No.	Latitude	Longitude
1	24.802960	73.450834	18	24.813667	73.454930
2	24.803579	73.450209	19	24.813193	73.455735
3	24.803407	73.449278	20	24.812599	73.456464
4	24.803922	73.448528	21	24.811814	73.456902
5	24.804788	73.448498	22	24.810923	73.456857
6	24.805481	73.449107	23	24.810037	73.456737
7	24.806172	73.449713	24	24.809147	73.456724
8	24.806956	73.450169	25	24.808419	73.456197
9	24.807603	73.450843	26	24.807839	73.455513
10	24.808394	73.451222	27	24.807018	73.455589
11	24.809247	73.451497	28	24.806204	73.455935
12	24.809921	73.452120	29	24.805415	73.455545
13	24.810755	73.452116	30	24.805179	73.454624
14	24.811638	73.452161	31	24.804924	73.453827
15	24.812369	73.452678	32	24.804384	73.453052
16	24.812778	73.453485	33	24.803634	73.452835
17	24.813511	73.453992	34	24.802902	73.452330

The detailed Map of Suthar Madra Wetland and its Zone of Influence is annexed herewith as Schedule-I



Schedule-II

Prohibited Activities in Suthar Madra Wetland:-

1. Conversion for non wetland uses including encroachments of any kind;
2. Setting up of any new industry and expansion of existing industries;
3. Manufacture or/and handling or/and storage or/and disposal of construction and demolition waste covered under the Construction and Demolition Waste Management Rules, 2016; hazardous substances covered under the Manufacture, Storage and Import of Hazardous Chemical Rules, 1989 or the Rules for Manufacture, Use, Import, Export and Storage of Hazardous Microorganism Genetically Engineered organized or cells, 1989 or the Hazardous Waste (Management, Handling and Transboundary Movement) Rules, 2008; electronic waste covered under the E-Waste (Management) Rules 2016; plastic waste covered under Plastic Waste (Management) Rules, 2016;
4. Solid waste storage and disposal;

5. Discharge of untreated waste and effluents from industries, cities, towns, villages and other human settlements;
6. Any construction of permanent nature except for boat jetties within fifty metres from the mean high flood level observed in the past ten years calculated from the date of commencement of these rules;
7. Commercial mining, stone quarrying and crushing units
8. Commercial water extraction Establishment of large scale commercial livestock and poultry farms;
9. Reducing area/ capacity of the water body;
10. Feeding of fishes and migratory birds by the public;
11. Any type of poaching.

Prohibited Activities in Catchment Area/Zone of Influence:-

1. Discharge of untreated Solid/liquid waste and effluents;
2. Manufacture or/and handling or/and storage or/and disposal of construction and demolition waste covered under the Construction and Demolition Waste Management Rules, 2016; hazardous substances covered under the Manufacture, Storage and Import of Hazardous Chemical Rules, 1989 or the Rules for Manufacture, Use, Import, Export and Storage of Hazardous Microorganism Genetically Engineered organized or cells, 1989 or the Hazardous Waste (Management, Handling and Transboundary Movement) Rules, 2008; electronic waste covered under the E-Waste (Management) Rules 2016; plastic waste covered under Plastic Waste (Management) Rules, 2016;
3. Extraction of commercial water including groundwater.
4. Any type of poaching;

Schedule-III

Regulated Activities in Suthar Madra Wetland:-

1. Fisheries;
2. Plying of boats;
3. Desilting;
4. Construction of temporary structures;
5. Water extraction for certain purposes.

Regulated Activities in Catchment Area/Zone of Influence:-

1. Conversion of land for any type of construction;
2. Setting up of any new industries and expansion of existing industries;
3. Mining.

[F.No.6 (3) Env/2023]

By order of the Governor,

Shikhar Agrawal,

Additional Chief Secretary to the Government.

Government Central Press, Jaipur.