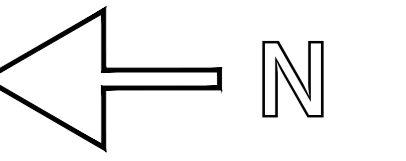


# RIICO AJMER



## SCHEDULE OF PLOTS

TYPE	SIZE IN METERS	AREA IN SQM.	NOS.	SET BACKS		
				FRONT	SIDE	REAR
E.	50.00 X 80.00	4000.00 "	19	12M.	6M.	6M.
F.	30.00 X 65.00	2000.00 "	40	6M.	3M.	3M.
G.	30.00 X 50.00	1500.00 "	06	5M.	3M.	3M.
G1	25.00 X 40.00	1000.00 "	120	5M.	3M. (ONE SIDE)	2.50M.
H	20.00 X 35.00	700.00 "	16	4M.	3M. (ONE SIDE)	2M.

TOTAL NOS OF PLOTS 201

### LAND USE :-

- (1) AREA UNDER SCHEME = 218.15 + 48.40 = 266.55 ACRES
- (2) " " PLOTS 78.50 "
- (3) " " ROADS 26.35 "
- (4) " " TRUCK TERMINUS 17.55 "
- (5) " " SERVICES 4.50 "
- (6) " " OPEN 5.75 "
- (7) " " HILLOCK 47.00 "
- (8) AREA REASERVED FOR FUTURE PLAN  
AREA UNDER COMMERCIAL - 0.12  
COMPLEX 38.50 "

### NOTE:-

- (1) THE ALLOTMENT OF THE PLOTS WHICH ARE UNDER POWER LINE SHOULD BE MADE AFTER THE SHIFTING OF LINES
- (2) PLOT NO G-31 RESERVED FOR SERVICES

## PROPOSED LAY-OUT PLAN FOR INDUSTRIAL AREA ON N.H. 8 BYE PASS KISHANGARH-III DISTT. AJMER

SCALE 1CM =60M DRG. NO. IPI/53/89 DT.14-11-89

DEALT. BY REV I IPI/82/94  
REV II IPI/317/94 IPI/10/5/94  
REV III IPI/821/99 DT.24-12-99

(S.K. JANGIR)  
SR. DRAUGHTSMAN (R.C RAJORIA)  
SR. DRAUGHTSMAN

CHAKED BY CHAKED BY

(B.S. PARIHAR)  
SR. PLANNING ASSTT. (D.K. SHARMA)  
ASST. REGIONAL MANAGER

(B.R.P. BHATNAGAR)  
DY. TOWAN PLANNER (R.B. YADAV)  
REGIONAL MANAGER



VACANT PLOTS SHOWN IN THUS         
IND. PLOTS 9 NOS.  
COMM. PLOTS 14 NOS.