

# BHAMASHAH

## SCHEDULE OF PLOTS

TYPE	SIZE IN METRES	AREA IN SQM	NOS.	SET BACKS			
				FRONT	SIDE	REAR	ROAD
B	80.00 x 100.00	8000	6	12.00	6.00	6.00	6.00
E	50.00 x 80.00	4000	12	8.00	4.00	4.00	4.00
F	30.00 x 65.00	2000	56	5.00	3.00	3.00	3.00
G	30.00 x 50.00	1500	16	5.00	3.00	3.00	3.00
G	25.00 x 40.00	1000	59	5.00	3.00	3.00	2.50
H	20.00 x 35.00	700	23	4.00	3.00	2.00	2.00
H	20.00 x 25.00	500	3	3.00	3.00		1.20

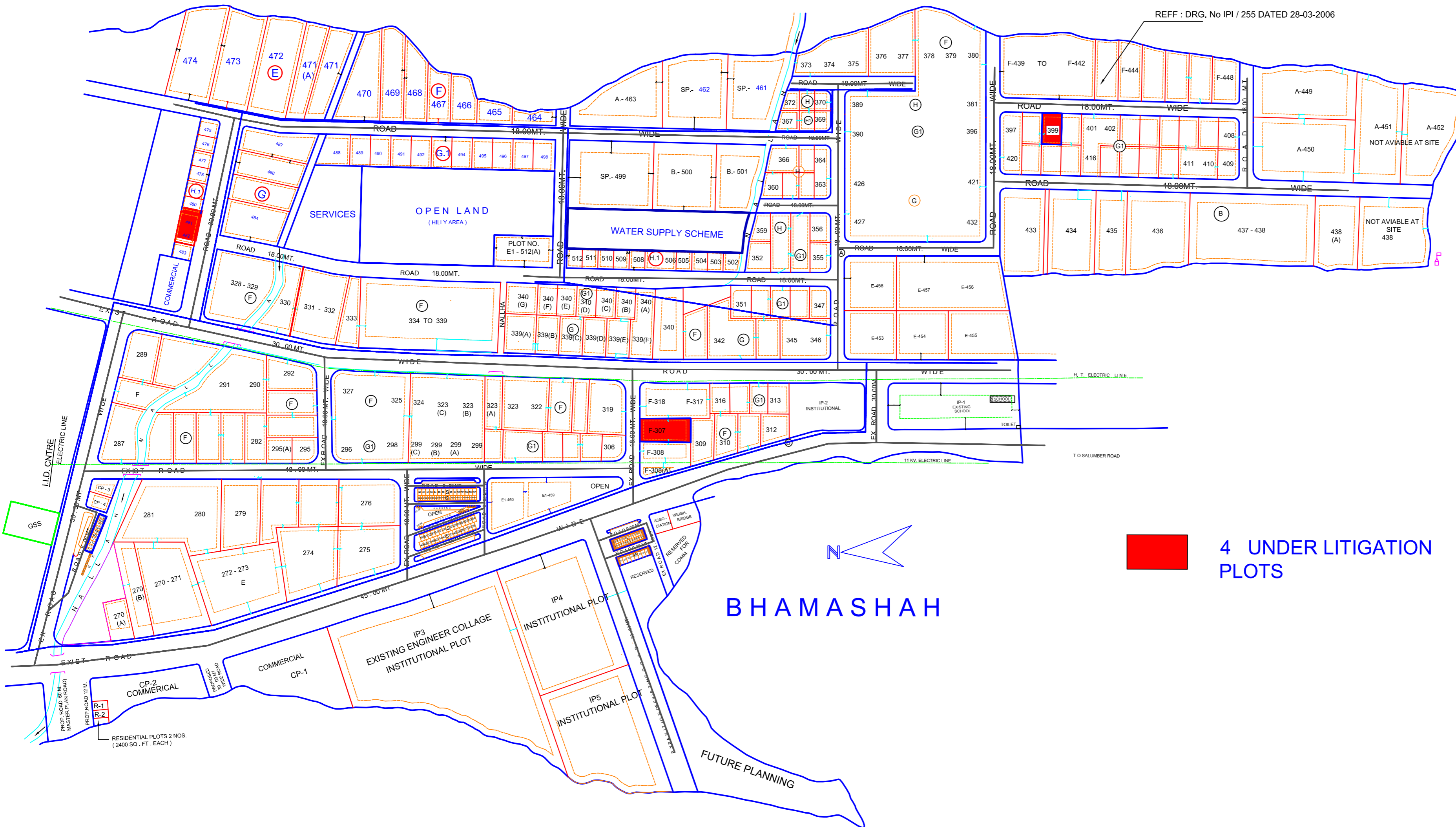
TOTAL NOS OF PLOTS 175

## LAND USE

AREA	UNDER	SCHEME	252.93 ACRE
-	-	PLOTS	62.61 *
-	-	ROADS	44.69 *
-	-	OPEN	14.90 *
-	-	SERVICES	2.49 *
-	-	FUTURE PLANNING	4.97 *
-	-	COMMERCIAL	4.31 *
-	-	HILLS	73.96 *
-	-	INSTITUTIONAL PLOTS	25.00 *

## NOTE :

- THIS DRAWING HAS BEEN PREPARED AS PER SR. RM LETTER No. 2526 DATED 6.8.02 AND 1183 DT. 19.6.03 AND APPROVED BY CMD VIDE PARA No. 191 / N ON DATED 24.06.2003 IN SECTION FILE.
- THE REVISION OF PLOT NO.F-439 TO 448&A-449 TO 452 ARE AS PER PART PLAN APPROVED FROM H.O.DRG. NO. IPI/ 255/2006



**4 UNDER LITIGATION PLOTS**

## REVISED LAY OUT PLOT OF INDUSTRIAL AREA BHAMASHAH VILLAGE KALADWAS DISTT.UDAIPUR

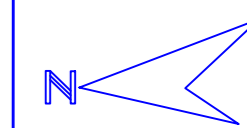
SCALE : 1 CM =20.00 MTR. DRG. No. IPI / 13 / 2003 DT. 26.6.03

REV-1 IPI / 78 / 2003 DT. 03.12.2003  
REV-2 IPI / 541/ 2009 DT . 25.02.2009

S.L. KUMAWAT  
SR. DRAUGHTSMAN

R.G.MAHAWAR  
ASSTT. TOWN PLANNER

MUKESH MITTAL  
DY. TOWN PLANNER



# RIICO